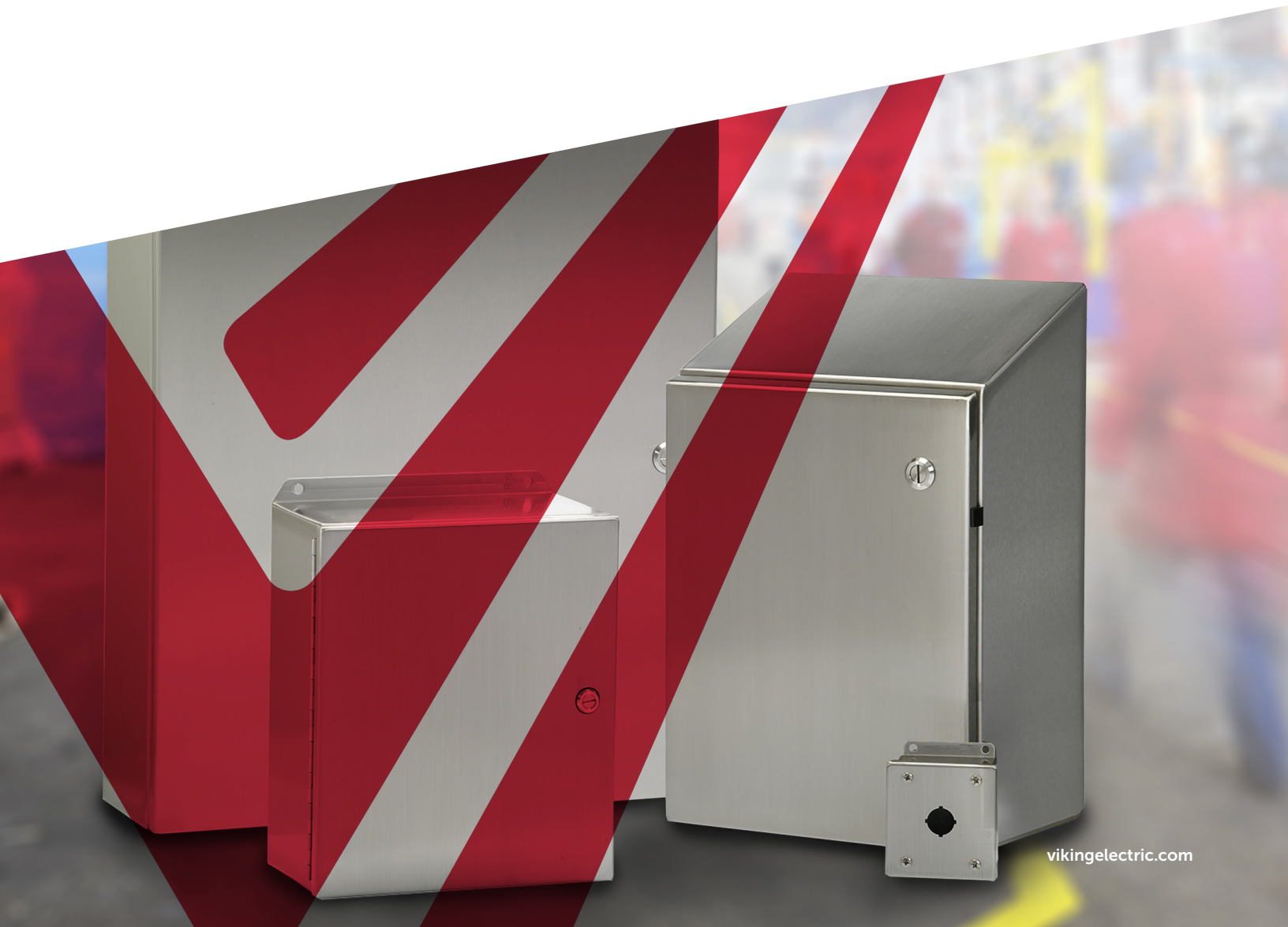


# enclosures

## IN STOCK GUIDE





## WARRANTY AND LIABILITY LIMITATION

Products sold by Viking Electric are warranted only to the extent of any applicable manufacturer's warranty. Viking Electric makes no warranties regarding the products it sells, express or implied, including without limitation any implied warranties or merchantability or fitness for a particular purpose, and all such warranties are hereby disclaimed and excluded.

In any event, Viking Electric's liability for any reason, including without limitation negligence or the doctrine of strict liability, shall not include special, consequential or incidental damages and shall be limited to the cost of the product sold by Viking Electric giving rise to the claim.

All products are not stocked in all locations.

Products in stock are subject to change.

# TABLE OF CONTENTS

<b>STEEL ENCLOSURES</b> .....	<b>2</b>	<b>ACCESSORIES - STEEL</b> .....	<b>12-13</b>
NEMA TYPE 1.....	2-3	<b>FIBERGLASS ENCLOSURES &amp; COVERS</b> .....	<b>14</b>
NEMA TYPE 1, 3R, 12 & 4.....	4-5	NEMA TYPE 3, 4X, 6P & 12 .....	14
NEMA TYPE 3R.....	6	<b>BACK PANELS &amp; ACCESSORIES -</b>	
NEMA TYPE 4, 4X, & 12.....	7	<b>FIBERGLASS</b> .....	<b>15</b>
NEMA TYPE 4, 12, & 13 .....	8	<b>NEMA CLASSIFICATIONS</b> .....	<b>16-17</b>
NEMA TYPE 12 & 13.....	9		
<b>BACK PANELS - STEEL</b> .....	<b>10</b>	<b>PREFIX LEGEND:</b>	
<b>WIREWAY</b> .....	<b>11</b>	WIEG = HUBBELL® WIEGMANN®	
NEMA TYPE 1.....	11	RTL = RITTAL	
NEMA TYPE 3R.....	11	STAHL = STAHLIN®	
		A ROBROY ENCLOSURES™ BRAND	

# STEEL ENCLOSURES

## NEMA TYPE 1

### SCREW COVER JUNCTION BOX

Without Knock-Outs, Painted Steel

Stock #	Enclosure Size (inches)	
	H	X W X D
WIEG SC040404NK	4	X 4 X 4
WIEG SC040604NK	4	X 6 X 4
WIEG SC060604NK	6	X 6 X 4
WIEG SC060606NK	6	X 6 X 6
WIEG SC060804NK	6	X 8 X 4
WIEG SC061204NK	6	X 12 X 4
WIEG SC080804NK	8	X 8 X 4
WIEG SC080806NK	8	X 8 X 6
WIEG SC081004NK	8	X 10 X 4
WIEG SC081006NK	8	X 10 X 6
WIEG SC081204NK	8	X 12 X 4
WIEG SC101004NK	10	X 10 X 4
WIEG SC101006NK	10	X 10 X 6
WIEG SC101206NK	10	X 12 X 6
WIEG SC121204NK	12	X 12 X 4
WIEG SC121206NK	12	X 12 X 6
WIEG SC121208NK	12	X 12 X 8
WIEG SC121504NK	12	X 15 X 4
WIEG SC121506NK	12	X 15 X 6
WIEG SC121804NK	12	X 18 X 4
WIEG SC121806NK	12	X 18 X 6
WIEG SC151804NK	15	X 18 X 4
WIEG SC151806NK	15	X 18 X 6
WIEG SC181804NK	18	X 18 X 4
WIEG SC181806NK	18	X 18 X 6
WIEG SC181808NK	18	X 18 X 8
WIEG SC182406NK	18	X 24 X 6
WIEG SC242404NK	24	X 24 X 4
WIEG SC242406NK	24	X 24 X 6
WIEG SC242408NK	24	X 24 X 8
WIEG SC242410NK	24	X 24 X 10
WIEG SC242412NK	24	X 24 X 12
WIEG SC303008NK	30	X 30 X 8
WIEG SC363608NK	36	X 36 X 8
WIEG SC363612NK	36	X 36 X 12



Painted Steel



Galvanized

### SCREW COVER JUNCTION BOX

With Knock-Outs, Painted Steel

STOCK #	Enclosure Size (inches)	
	H	X W X D
WIEG SC060604	6	X 6 X 4
WIEG SC060804	6	X 8 X 4
WIEG SC080804	8	X 8 X 4
WIEG SC081004	8	X 10 X 4
WIEG SC101004	10	X 10 X 4
WIEG SC101006	10	X 10 X 6
WIEG SC121204	12	X 12 X 4
WIEG SC121206	12	X 12 X 6

### SCREW COVER JUNCTION BOX

With Knock-Outs, Galvanized

Stock #	Enclosure Size (inches)	
	H	X W X D
WIEG SC060604G	6	X 6 X 4
WIEG SC080804G	8	X 8 X 4
WIEG SC121204G	12	X 12 X 4

### SCREW COVER JUNCTION BOX

Without Knock-Outs, Galvanized

Stock #	Enclosure Size (inches)	
	H	X W X D
WIEG SC080804GNK	8	X 8 X 4

## SMALL CABINET CONTINUOUS HINGE

With Coin/Screwdriver Operated Flush Latch, Steel, Panel NOT included

Stock #	Enclosure Size (inches)		Back Panel
	H	X W X D	
WIEG N1C101004	10	X 10 X 4	WIEG N1P1010
WIEG N1C101006	10	X 10 X 6	WIEG N1P1010
WIEG N1C101206	10	X 12 X 6	WIEG N1P1012
WIEG N1C121204	12	X 12 X 4	WIEG N1P1212
WIEG N1C121206	12	X 12 X 6	WIEG N1P1212
WIEG N1C121406	12	X 14 X 6	WIEG N1P1214
WIEG N1C121606S	16	X 12 X 6	WIEG N1P1216



## MEDIUM CABINET BUTT HINGE, QUICK RELEASE

Non-Locking Pull Latch, Panel NOT included

Stock #	Enclosure Size (inches)		Back Panel
	H	X W X D	
WIEG N1C161606LP	16	X 16 X 6	N1P1616
WIEG N1C162006LP	16	X 20 X 6	N1P1620
WIEG N1C162008LP	16	X 20 X 8	N1P1620
WIEG N1C202006LP	20	X 20 X 6	N1P2020
WIEG N1C202008LP	20	X 20 X 8	N1P2020
WIEG N1C202406LP	20	X 24 X 6	N1P2024
WIEG N1C242408LP	24	X 24 X 08	N1P2424
WIEG N1C243010LP	24	X 30 X 10	N1P2430



# STEEL ENCLOSURES

## NEMA 1, 3R, 12, & 4

### JB JUNCTION BOX ENCLOSURE

Left-Hand Hinged Door, Single Quarter-Turn Latch, With Screwdriver Insert, Zinc-Plated Mounting Panel Included



Carbon Steel

Stock #	Enclosure Size (inches)	
	H	X W X D
RTL JB040403HC	4 X 4	X 3
RTL JB060403HC	6 X 4	X 3
RTL JB060404HC	6 X 4	X 4
RTL JB060604HC	6 X 6	X 4
RTL JB080604HC	8 X 6	X 4
RTL JB080606HC	8 X 6	X 6
RTL JB080804HC	8 X 8	X 4
RTL JB100806HC	10 X 8	X 6
RTL JB101006HC	10 X 10	X 6
RTL JB121005HC	12 X 10	X 5
RTL JB121006HC	12 X 10	X 6
RTL JB121008HC	12 X 10	X 8
RTL JB121206HC	12 X 12	X 6
RTL JB141206HC	14 X 12	X 6
RTL JB161406HC	16 X 14	X 6
RTL JB161408HC	16 X 14	X 8

### Stainless Steel - Type 304

Stock #	Enclosure Size (inches)	
	H	X W X D
RTL JB060604H4	6 X 6	X 4
RTL JB080606H4	8 X 6	X 4
RTL JB080804H4	8 X 8	X 4
RTL JB121206H4	12 X 12	X 6
RTL JB161406H4	16 X 14	X 6

### WALL MOUNT ENCLOSURE

Left-Hand Hinged Door, 3-Point Latching Tool-To-Open L-Handle, Zinc-Plated Mounting Panel Included



Carbon Steel

Stock #	Enclosure Size (inches)	
	H	X W X D
RTL WM121206NC	12 X 12	X 6
RTL WM161206NC	16 X 12	X 6
RTL WM161208NC	16 X 12	X 8
RTL WM161606NC	16 X 16	X 6
RTL WM161608NC	16 X 16	X 8
RTL WM162008NC	16 X 20	X 8
RTL WM201608NC	20 X 16	X 8
RTL WM202006NC	20 X 20	X 6
RTL WM202012NC	20 X 20	X 12
RTL WM242008NC	24 X 20	X 8
RTL WM242010NC	24 X 20	X 10
RTL WM242408NC	24 X 24	X 8
RTL WM242412NC	24 X 24	X 12
RTL WM302408NC	30 X 24	X 8
RTL WM302410NC	30 X 24	X 10
RTL WM302412NC	30 X 24	X 12
RTL WM303008NC	30 X 30	X 8
RTL WM303012NC	30 X 30	X 12
RTL WM362410NC	36 X 24	X 10
RTL WM363010NC	36 X 30	X 10
RTL WM363012NC	36 X 30	X 12
RTL WM363612NC	36 X 36	X 12
RTL WM483612NC	48 X 36	X 12
RTL WM483616NC	48 X 36	X 16

## WALL MOUNT ENCLOSURE (CONT.)

Left-Hand Hinged Door, 3-Point Latching Tool-To-Open L-Handle, Zinc-Plated  
Mounting Panel Included



Stainless Steel - Type 304

Stock #	Enclosure Size (inches)
	H X W X D
RTL WM121206N4	12 X 12 X 6
RTL WM161208N4	16 X 12 X 8
RTL WM161606N4	16 X 16 X 6
RTL WM201608N4	20 X 16 X 8
RTL WM202008N4	20 X 20 X 8
RTL WM242008N4	24 X 20 X 8
RTL WM242408N4	24 X 24 X 8
RTL WM242412N4	24 X 24 X 12



# STEEL ENCLOSURES



WIEG RHC060604



WIEG RHC161206



WIEG LOH121006



WIEG RSC121204G



WIEG RSC060604

## NEMA TYPE 3R

### CONTINUOUS GALVANIZED STEEL HINGE COVER

Small with Padlockable Draw Latch, Carbon Steel,  
Back Panel Not Included

Stock #	Enclosure Size (inches)		Back Panel
	H	X W X D	
WIEG RHC060604	6	X 6 X 4	N1P0606
WIEG RHC060804	6	X 8 X 4	N1P0608
WIEG RHC080804	8	X 8 X 4	N1P0808
WIEG RHC101206	10	X 12 X 6	N1P1012
WIEG RHC121206	12	X 12 X 6	N1P1212

With Padlockable Hasp and Staple, Carbon Steel,  
Back Panel Not Included

Stock #	Enclosure Size (inches)		Back Panel
	H	X W X D	
WIEG RHC161206	16	X 12 X 6	NP1612
WIEG RHC161606	16	X 16 X 6	NP1616
WIEG RHC201606	20	X 16 X 6	NP2016
WIEG RHC202008	20	X 20 X 8	NP2020
WIEG RHC242008	24	X 20 X 8	NP2420
WIEG RHC242408	24	X 24 X 8	NP2424
WIEG RHC302408	30	X 24 X 8	NP3024
WIEG RHC303012	30	X 30 X 12	NP3030
WIEG RHC362412	36	X 24 X 12	NP3624
WIEG RHC363012	36	X 30 X 12	NP3630
WIEG RHC363612	36	X 36 X 12	NP3636

### LIFT OFF HINGE COVER

With Padlockable Draw Catches, Carbon Steel,  
Back Panel Not Included

Stock #	Enclosure Size (inches)		Back Panel
	H	X W X D	
WIEG LOH121206	12	X 12 X 6	WIEG P1212
WIEG LOH161606	16	X 16 X 6	WIEG NP1616
WIEG LOH201606	20	X 16 X 6	WIEG NP2016
WIEG LOH202008	20	X 20 X 8	WIEG NP2020

### DRIP SHIELD TOP - GALVANIZED STEEL

With Removable Slip On Cover and Hasp for  
Padlocking, Carbon Steel, Without Knock-Outs

Stock #	Enclosure Size (inches)	
	H	X W X D
WIEG RSC080804NK	8	X 8 X 4
WIEG RSC101004NK	10	X 10 X 4
WIEG RSC121204NK	12	X 12 X 4
WIEG RSC121206NK	12	X 12 X 6

### DRIP SHIELD TOP - GALVANIZED STEEL

With Removable Slip On Cover and Hasp for  
Padlocking, With Knock-Outs

Stock #	Enclosure Size (inches)	
	H	X W X D
WIEG RSC060604	6	X 6 X 4
WIEG RSC060804	6	X 8 X 4
WIEG RSC080804	8	X 8 X 4
WIEG RSC080806	8	X 8 X 6
WIEG RSC081004	8	X 10 X 4
WIEG RSC081006	8	X 10 X 6
WIEG RSC101004	10	X 10 X 4
WIEG RSC121204	12	X 12 X 4
WIEG RSC121206	12	X 12 X 6
WIEG RSC121208	12	X 12 X 8
WIEG RSC121806	12	X 18 X 6
WIEG RSC181806	18	X 18 X 6



# STEEL ENCLOSURES



WIEG N4161208



WIEG BN4060604CH



WIEG SSN4161606



WIEG BN4060404CHSS

## NEMA TYPE 4

### SINGLE DOOR WALL MOUNT CONTINUOUS STAINLESS STEEL HINGE

Stainless Steel Captive Clamps,  
Back Panel Not Included

Stock #	Enclosure Size (inches)		Back Panel
	H	W X D	
WIEG N4161208	16	X 12 X 8	WIEG NP1612
WIEG N4202006	20	X 20 X 6	WIEG NP2020
WIEG N4242408	24	X 24 X 8	WIEG NP2424

### CONTINUOUS STAINLESS STEEL HINGE

Stainless Steel Captive Clamps, Steel

Stock #	Enclosure Size (inches)		Back Panel
	H	W X D	
WIEG BN4060604CH	6	X 6 X 4	WIEG P0606
WIEG BN4100804CH	10	X 8 X 4	WIEG P1008
WIEG BN4100806CH	10	X 8 X 6	WIEG P1008
WIEG BN4121005CH	12	X 10 X 5	WIEG P1210
WIEG BN4121206CH	12	X 12 X 6	WIEG P1212
WIEG BN4161406CH	16	X 14 X 6	WIEG P1614

## NEMA TYPE 4X

### SINGLE DOOR WALL MOUNT CONTINUOUS STAINLESS STEEL HINGE

Stainless Steel Captive Clamps

Stock #	Enclosure Size (inches)		Back Panel
	H	W X D	
WIEG BN4060404CHSS	6	X 4 X 4	WIEG P0604
WIEG BN4060604CHSS	6	X 6 X 4	WIEG P0606
WIEG BN4100804CHSS	10	X 8 X 4	WIEG P1008
WIEG BN4121206CHSS	12	X 12 X 6	WIEG P1212
WIEG BN4141206CHSS	14	X 12 X 6	WIEG P1416

## NEMA TYPE 4, 4X & 12

### PUSHBUTTON ENCLOSURE



30mm

Stock #	Enclosure Size (inches)		# of Holes
	H	W X D	
WIEG PBSS1	3.50	X 3.25 X 2.81	1
<b>Carbon Steel</b>			
RTL PB01225M1C	3.2	X 2.7 X 3.5	1
RTL PB01305S1C	3.5	X 3.2 X 2.7	1
RTL PB02305S1C	5.7	X 3.2 X 2.7	2
RTL PB04225M1C	8.9	X 2.7 X 3.5	4
<b>Carbon Steel - Extra Large</b>			
RTL PB02305X1C	6	X 4 X 4.7	2
<b>Stainless Steel</b>			
RTL PB01305S14	3.5	X 3.2 X 2.7	1
RTL PB02305S14	5.7	X 3.2 X 2.7	2

NEMA TYPE 4, 4X & 12

# STEEL ENCLOSURES



## NEMA TYPE 4, 12 & 13

### SINGLE DOOR WALL MOUNT

Continuous Hinge with 1/4-Turn Semi-Flush Oil-Tight Latches, Steel, Back Panel Not Included

Stock #	Enclosure Size (inches)		Back Panel
	H	X W X D	
WIEG N412121206C	12	X 12 X 6	WIEG NP1212C
WIEG N412121208C	12	X 12 X 8	WIEG NP1212C
WIEG N412161608C	16	X 16 X 8	WIEG NP1612C
WIEG N412162008C	16	X 20 X 8	WIEG NP1620C
WIEG N412201608C	20	X 16 X 8	WIEG NP2016C
WIEG N412202006C	20	X 20 X 6	WIEG NP2020C
WIEG N412202008C	20	X 20 X 8	WIEG NP2020C
WIEG N412242406C	24	X 24 X 6	WIEG NP2424C
WIEG N412242412C	24	X 24 X 12	WIEG NP2424C
WIEG N412303012C	30	X 30 X 12	WIEG NP3030C
WIEG N412363008C	36	X 30 X 8	WIEG NP3630C
WIEG N412363012C	36	X 30 X 12	WIEG NP3630C
WIEG N412363612C	36	X 36 X 12	WIEG NP3636C



## NEMA TYPE 12 & 13

### SINGLE DOOR WALL MOUNT

Continuous Hinge with External Screw Clamps, Steel, Back Panel Not Included

Stock #	Enclosure Size (inches)		Back Panel
	H	X W X D	
WIEG B040403CH	4	X 4 X 3	NONE
WIEG B040404CH	4	X 4 X 4	NONE
WIEG B060403CH	6	X 4 X 3	WIEG P0604
WIEG B060404CH	6	X 4 X 4	WIEG P0604
WIEG B060604CH	6	X 6 X 4	WIEG P0606
WIEG B080603CH	8	X 6 X 3	WIEG P0806
WIEG B080606CH	8	X 6 X 6	WIEG P0806
WIEG B080804CH	8	X 8 X 4	WIEG P0808
WIEG B100804CH	10	X 8 X 4	WIEG P1008
WIEG B100806CH	10	X 8 X 6	WIEG P1008
WIEG B101006CH	10	X 10 X 6	WIEG P1010
WIEG B121005CH	12	X 10 X 5	WIEG P1210
WIEG B121008CH	12	X 10 X 8	WIEG P1210
WIEG B121206CH	12	X 12 X 6	WIEG P1212
WIEG B141206CH	14	X 12 X 6	WIEG P1412
WIEG B141208CH	14	X 12 X 8	WIEG P1412
WIEG B161406CH	16	X 14 X 6	WIEG P1614
WIEG B161408CH	16	X 14 X 8	WIEG P1614
WIEG B161410CH	16	X 14 X 10	WIEG P1614
WIEG B201607CH	20	X 16 X 7	WIEG NP2016
WIEG B202007CH	20	X 20 X 7	WIEG NP2020
WIEG B242407CH	24	X 24 X 7	WIEG NP2424
WIEG B302409CH	30	X 24 X 9	WIEG NP3024
WIEG B362411CH	36	X 24 X 11	WIEG NP3624
WIEG B363009CH	36	X 30 X 9	WIEG NP3630

# STEEL ENCLOSURES



## NEMA TYPE 12 & 13

### SINGLE DOOR WALL MOUNT

Continuous Hinge with Clamps and Hasp/Staple for Padlocking, Steel, Back Panel Not Included

Stock #	Enclosure Size (inches)		Back Panel
	H	X W X D	
WIEG N12161208	16	X 12 X 8	WIEG NP1612
WIEG N12161606	16	X 16 X 6	WIEG NP1616
WIEG N12202008	20	X 20 X 8	WIEG NP2020
WIEG N12242408	24	X 24 X 8	WIEG NP2424
WIEG N12242412	24	X 24 X 12	WIEG NP2424
WIEG N12302408	30	X 24 X 8	WIEG NP3024
WIEG N12483612	48	X 36 X 12	WIEG NP4836



### LIFT OFF COVER

External Screw Clamps and Chain, Steel, Back Panel Not Included

Stock #	Enclosure Size (inches)		Back Panel
	H	X W X D	
WIEG B060404	6	X 6 X 4	WIEG P0606
WIEG B080603	8	X 6 X 3	WIEG P0806



WIEG PB2



WIEG PB4BC



WIEG PBGX1

## NEMA TYPE 12 & 13

### STANDARD PUSHBUTTON ENCLOSURE

30mm, Steel

Stock #	Enclosure Size (inches)		# of Holes
	H	X W X D	
WIEG PB1	3.50	X 3.25 X 2.81	1
WIEG PB2	5.75	X 3.258 X 2.81	2
WIEG PB3	8.00	X 3.25 X 2.81	3

### PUSHBUTTON ENCLOSURE

Blank Cover

Stock #	Enclosure Size (inches)	
	H	X W X D
WIEG PB2BC	5.75	X 3.25 X 2.81
WIEG PB4BC	10.25	X 3.25 X 2.81

### MINIATURE PUSHBUTTON ENCLOSURE

22mm

Stock #	Enclosure Size (inches)		# of Holes
	H	X W X D	
WIEG PBGX1	3.25	X 2.75 X 3.50	1
WIEG PBGX2	5.13	X 2.75 X 3.50	2



### CONSOLE

Continuous Hinge On Control Panel, Captivated Screw Cover, Steel

Stock #	Size (inches)	
	H	X W X D
WIEG WC08C12	8	X 12 X 7.09
WIEG WC12C20	12	X 12 X 9.09
WIEG WC16C24	16	X 24 X 11.09

# BACK PANELS - STEEL



## NEMA TYPE 1, 3R, 4, 4 X & 12

Steel with White Finish

Stock #	Size (inches) H X W X D
WIEG NP1212C	12 X 12
WIEG NP1616C	16 X 16
WIEG NP2016C	20 X 16
WIEG NP2020C	20 X 20
WIEG NP2424C	24 X 24
WIEG NP3630C	36 X 30
WIEG NP3636C	36 X 36
WIEG NP4836C	48 X 36
WIEG NP6036C	60 X 36

## NEMA TYPE 1 & 3R

Steel with White Finish

Stock #	Enclosure Size (inches) H X W X D
WIEG N1P0606	6 X 6
WIEG N1P0808	8 X 8
WIEG N1P1010	10 X 10
WIEG N1P1012	10 X 12
WIEG N1P1212	12 X 12
WIEG N1P1214	12 X 14
WIEG N1P1216	12 X 16
WIEG N1P1616	16 X 16
WIEG N1P1620	16 X 20
WIEG N1P2020	20 X 20
WIEG N1P2024	20 X 24
WIEG N1P2424	24 X 24
WIEG N1P2430	24 X 30
WIEG N1P2436	24 X 36

## NEMA 4 & 12

For Ultimate Series, Steel with White Finish

Stock #	Size (inches) H X W X D
WIEG NP1212C	12 X 12
WIEG NP1616C	16 X 16
WIEG NP2016C	20 X 16
WIEG NP2020C	20 X 20
WIEG NP2424C	24 X 24
WIEG NP3030C	30 X 30
WIEG NP3630C	36 X 30
WIEG NP3636C	36 X 36

## NEMA TYPE 4, 4X, 12 & 13

Steel with White Finish

Stock #	Size (inches) H X W X D
WIEG NP1212	12 X 12
WIEG NP1612	16 X 12
WIEG NP1616	16 X 16
WIEG NP2016	20 X 16
WIEG NP2020	20 X 20
WIEG NP2420	24 X 20
WIEG NP2424	24 X 24
WIEG NP3024	30 X 24
WIEG NP3030	30 X 30
WIEG NP3624	36 X 24
WIEG NP3630	36 X 30
WIEG NP3636	36 X 36
WIEG NP4836	48 X 36

## JIC ENCLOSURES

Steel with White Finish

Stock #	Enclosure Size (inches) H X W X D
WIEG P0604	6 X 4
WIEG P0606	6 X 6
WIEG P0806	8 X 6
WIEG P0808	8 X 8
WIEG P1008	10 X 8
WIEG P1010	10 X 10
WIEG P1210	12 X 10
WIEG P1212	12 X 12
WIEG P1412	14 X 12
WIEG P1614	16 X 14



## NEMA TYPE 1

### STRAIGHT GENERAL PURPOSE WIREWAY

Hinge/Screw Cover, without Knock-Outs, Steel

Stock #	Size (inches)
	H X W X D
WIEG HS222NK	2 X 2 X 24
WIEG HS223NK	2 X 2 X 36
WIEG HS441NK	4 X 4 X 12
WIEG HS442NK	4 X 4 X 24
WIEG HS443NK	4 X 4 X 36
WIEG HS444NK	4 X 4 X 48
WIEG HS445NK	4 X 4 X 60
WIEG HS446NK	4 X 4 X 72
WIEG HS4410NK	4 X 4 X 120
WIEG HS661NK	6 X 6 X 12
WIEG HS662NK	6 X 6 X 24
WIEG HS663NK	6 X 6 X 36
WIEG HS664NK	6 X 6 X 48
WIEG HS665NK	6 X 6 X 60
WIEG HS6610NK	6 X 6 X 120
WIEG HS881NK	8 X 8 X 12
WIEG HS882NK	8 X 8 X 24
WIEG HS883NK	8 X 8 X 36
WIEG HS884NK	8 X 8 X 48
WIEG HS885NK	8 X 8 X 60
WIEG HS12122NK	12 X 12 X 24
WIEG HS12123NK	12 X 12 X 36
WIEG HS12124NK	12 X 12 X 48
WIEG HS12125NK	12 X 12 X 60

Screw Cover, without Knock-Outs, Steel

Stock #	Size (inches)
	H X W X D
WIEG S4436NK	4 X 4 X 36
WIEG S6636NK	6 X 6 X 36
WIEG S6648NK	6 X 6 X 48



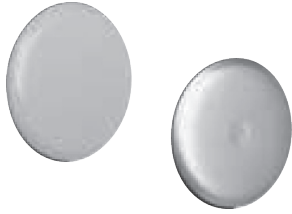
## NEMA TYPE 3R

### RAINTIGHT GUTTER

With Drip Shield Top, Carbon Steel

Stock #	Size (inches)
	H X W X D
WIEG RSCG040424	4 X 4 X 24
WIEG RSCG040436	4 X 4 X 36
WIEG RSCG040448	4 X 4 X 48
WIEG RSCG060624	6 X 6 X 24
WIEG RSCG060636	6 X 6 X 36
WIEG RSCG060648	6 X 6 X 48
WIEG RSCG080824	8 X 8 X 24
WIEG RSCG080836	8 X 8 X 36
WIEG RSCG080848	8 X 8 X 48

# ACCESSORIES-STEEL



## OIL TIGHT HOLE SEALS

Steel

Stock #	Size (inches)
WIEG WAS050	0.5
WIEG WAS075	0.75
WIEG WAS100	1
WIEG WAS125	1.25
WIEG WAS150	1.5
WIEG WAS200	2
WIEG WAS250	2.5
WIEG WAS300	3
WIEG WAS350	3.5
WIEG WAS400	4
RTL OHS100C	1
RTL OHS125C	1.25
RTL OHS150C	1.5
RTL OHS200C	2
RTL OHS250C	2.5
RTL OHS300C	3
RTL OHS400C	4

Hole Seal For Mini-Pushbutton

Stock #

RTL OHSMPBC

Standard Pushbutton

Stock #

Size (millimeters)

WIEG WASPB

30MM

Stainless Steel

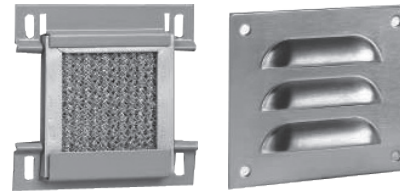
Stock #	Size (inches)
WIEG WAS050SS	0.5
WIEG WAS075SS	0.75
WIEG WAS100SS	1
WIEG WAS125SS	1.25
WIEG WAS150SS	1.5
WIEG WAS200SS	2



## SC SERIES FLUSH COVERS

For Type 1 Screw Cover Pull Bo X , Steel

Stock #	Size (inches)	For Box (inches)
WIEG SCF0404	6 X 6	4 X 4
WIEG SCF0606	8 X 8	6 X 6
WIEG SCF0808	10 X 10	8 X 8
WIEG SCF1010	12 X 12	10 X 10
WIEG SCF1212	14 X 14	12 X 12



## LOUVER PLATE KITS & FILTER KITS

Stock #	Filter Kit	Size (inches)	# of Louvers
WIEG WAVK0304	WIEG WAFLT34	4.75 X 4.5	3
WIEG WAVK0404	WIEG WAFLT44	5.62 X 5.5	4

# ACCESSORIES-STEEL

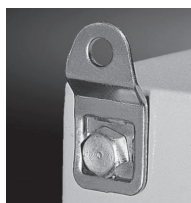


## HANDLES

Stock #	Description
RTL WMLHKL	L-HANDLE CARBON STEEL
RTL WMQTPLS6	THUMB-TURN HANDLE TYPE 316L STAINLESS STEEL PADLOCKABLE
RTL 2533000	NON-LOCKING INSERT RAL 9011 FOR USE ON CARBON STEEL ENCLOSURE
RTL 2576000	KEY-LOCKING RAL 9011 FRO USE ON CARBON STEEL ENCLOSURE

## MISC ACCESSORIES

Stock #	Description
Condensate Drain	
RTL 2459000	CONDENSATE DRAIN
Print Pocket	
RTL 2513000	A3 LANDSCAPE PLASTIC PRINT POCKET



Wallmount Bracket - Stainless Steel

RTL 1594000	WALLMOUNT BRACKET TAB-STYLE 8MM
RTL 2433000	WALLMOUNT BRACKET STAND-OFF 10MM



Wallmount Bracket - Steel

RTL 2503010	WALLMOUNT BRACKETS STAND-OFF 40MM
RTL 2508010	WALLMOUNT BRACKETS STAND-OFF 10MM



Screwdriver

RTL 2464000	LOCK INSERT VERSION A SCREWDRIVER
-------------	-----------------------------------

## NEMA TYPE 1

### TEE

General Purpose Wireway, Steel

Stock #	Size (inches)
WIEG T0404	4 X 4
WIEG T0606	6 X 6



### 90° ELBOW

General Purpose Wireway, Steel

Stock #	Size (inches)
WIEG L040490	4 X 4
WIEG L060690	6 X 6
WIEG L080890	8 X 8
WIEG L121290	12 X 12



### PANEL ADAPTER

General Purpose Wireway, Steel

Stock #	Size (inches)
WIEG PA0404	4 X 4
WIEG PA0606	6 X 6
WIEG PA0808	8 X 8
WIEG PA1212	12 X 12



### CONNECTOR

General Purpose Wireway, Steel

Stock #	Size (inches)
WIEG C0404	4 X 4
WIEG C0606	6 X 6
WIEG C0808	8 X 8
WIEG C1212	12 X 12



### END CAP

General Purpose Wireway, Steel

Stock #	Size (inches)
WIEG E0202	2 X 2
WIEG E0404	4 X 4
WIEG E0404NK	4 X 4
WIEG E0606	6 X 6
WIEG E0606NK	6 X 6
WIEG E0808	8 X 8
WIEG E0808NK	8 X 8
WIEG E1212NK	12 X 12



### TOUCH-UP PAINT

Stock #	TOUCH-UP SPRAY PAINT
WIEG WAGSE	





# FIBERGLASS ENCLOSURES & COVERS



## NEMA TYPE 3, 4X, 6P & 12

### FLAT SCREWHELD COVERS

With Stainless Steel Hinge

Stock #	Size (inches)	Back Panel
STA H J1412HW	13.53 X 11.55 X 5.94	STA H BP1412
STA H J1614HW	15.63 X 13.60 X 5.94	STA H BP1614

With Stainless Steel Hinge and Padlock Hasp

Stock #	Size (inches)	Back Panel
STA H J1412HPL	13.53 X 11.55 X 5.94	STA H BP1412
STA H J1816HPL	17.69 X 15.69 X 8.45	STA H BP1816

### SCREW COVER LIFT-OFF

Stock #	Size (inches)	Back Panel
STA H J606W	5.72 X 5.72 X 4.45	STA H BP66
STA H J806W	7.73 X 5.74 X 4.45	STA H BP86
STA H J1008W	9.73 X 7.73 X 3.98	STA H BP108
STA H J1210W	11.79 X 9.80 X 4.94	STA H BP1210
STA H J1412W	13.53 X 11.55 X 5.94	STA H BP1412

### FLAT COVER

With Stainless Steel Hinge and Link Lock Latch

Stock #	Size (inches)	Back Panel
STA H J1008HLL	9.73 X 7.73 X 3.98	STA H BP108

## NEMA TYPE 3, 4X, 6P & 12

### STANDARD PUSHBUTTON ENCLOSURE

Stock #	Size (inches)	# of Holes
STA H CF1PB	6.00 X 3.19 X 3.63	1
STA H CF2PB	6.00 X 3.19 X 3.63	2

## SMALL JUNCTION ENCLOSURE

With Flush Screwheld Cover

Stock #	Size (inches)
STA H CF644	6.00 X 3.19 X 3.63
STA H CF844	8.26 X 3.19 X 3.63
STA H CF1144	10.51 X 3.19 X 3.63

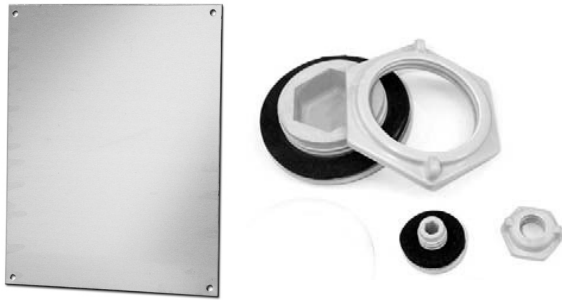
## NEMA TYPE 4X

### CONTROL ENCLOSURE

With Stainless Steel Latch Cover

Stock #	Size (inches)	Back Panel
STA H N20166HWT	19.70 X 16.04 X 7.24	STA H BP2016
STA H N24208HWT	24.05 X 20.39 X 9.25	STA H BP2420
STA H N30208HWT	29.90 X 20.14 X 9.23	STA H BP3020
STA H N302410HWT	30.46 X 25.47 X 11.27	STA H BP3024

# BACK PANELS & ACCESSORIES - FIBERGLASS



## BACK PANELS

Fiberglass Enclosures, Aluminum

Stock #	Size (inches)
STAH BP66AL	6 X 6
STAH BP86AL	8 X 6
STAH BP1210AL	12 X 10
STAH BP1412AL	14 X 12
STAH BP1614AL	16 X 14
STAH BP1816AL	18 X 16
STAH BP2016AL	20 X 16
STAH BP3024AL	30 X 24

Fiberglass Enclosures, Steel

Stock #	Size (inches)
STAH BP1816CS	18 X 16

## OIL TIGHT HOLE SEALS

Fiberglass

Stock #	Size (inches)
STAH HP SERIES1	1
STAH HP SERIES2	1.5
STAH HP SERIES3	2
STAH HP SERIES4	2.75

# NEMA CLASSIFICATIONS

The National Electrical Manufacturers Association (NEMA) is a US Manufacturers Organization which actively promotes standardized product specifications for electrical apparatus.

While NEMA does not actually test products, it establishes the performance criteria for enclosures intended for specific environments. NEMA standards describe each type of enclosure in general and functional terms, and specifically omits reference to construction details.

## Definitions – Non-Hazardous Locations

Specific enclosure Types, their applications, and the environmental conditions they are designed to protect against, **when completely and properly installed**, are as follows:

### Type 1

Enclosures constructed for indoor use to provide a degree of protection to personnel against access to hazardous parts and to provide a degree of protection of the equipment inside the enclosure against ingress of solid foreign objects (falling dirt).

### Type 2

Enclosures constructed for indoor use to provide a degree of protection to personnel against access to hazardous parts; to provide a degree of protection of the equipment inside the enclosure against ingress of solid foreign objects (falling dirt); and to provide a degree of protection with respect to harmful effects on the equipment due to the ingress of water (dripping and light splashing).

### Type 3

Enclosures constructed for either indoor or outdoor use to provide a degree of protection to personnel against access to hazardous parts; to provide a degree of protection of the equipment inside the enclosure against ingress of solid foreign objects (falling dirt and windblown dust); to provide a degree of protection with respect to harmful effects on the equipment due to the ingress of water (rain, sleet, snow); and that will be undamaged by the external formation of ice on the enclosure.

### Type 3R

Enclosures constructed for either indoor or outdoor use to provide a degree of protection to personnel against access to hazardous parts; to provide a degree of protection of the equipment inside the enclosure against ingress of solid foreign objects (falling dirt); to provide a degree of protection with respect to harmful effects on the equipment due to the ingress of water (rain, sleet, snow); and that will be undamaged by the external formation of ice on the enclosure.

### Type 3S

Enclosures constructed for either indoor or outdoor use to provide a degree of protection to personnel against access to hazardous parts; to provide a degree of protection of the equipment inside the enclosure against ingress of solid foreign objects (falling dirt and windblown dust); to provide a degree of protection with respect to harmful effects on the equipment due to the ingress of water (rain, sleet, snow); and for which the external mechanism(s) remain operable when ice laden.

### Type 4

Enclosures constructed for either indoor or outdoor use to provide a degree of protection to personnel against access to hazardous parts; to provide a degree of protection of the equipment inside the enclosure against ingress of solid foreign objects (falling dirt and windblown dust); to provide a degree of protection with respect to harmful effects on the equipment due to the ingress of water (rain, sleet, snow, splashing water, and hose directed water); and that will be undamaged by the external formation of ice on the enclosure.

### Type 4X

Enclosures constructed for either indoor or outdoor use to provide a degree of protection to personnel against access to hazardous parts; to provide a degree of protection of the equipment inside the enclosure against ingress of solid foreign objects (windblown dust); to provide a degree of protection with respect to harmful effects on the equipment due to the ingress of water (rain, sleet, snow, splashing water and hose directed water); that provides an additional level of protection against corrosion; and that will be undamaged by the external formation of ice on the enclosure.

### Type 5

Enclosures constructed for indoor use to provide a degree of protection to personnel against access to hazardous parts; to provide a degree of protection of the equipment inside the enclosure against ingress of solid foreign objects (falling dirt and settling airborne dust, lint, fibers, and flyings); and to provide a degree of protection with respect to harmful effects on the equipment due to the ingress of water (dripping and light splashing).

### Type 6

Enclosures constructed for either indoor or outdoor use to provide a degree of protection to personnel against access to hazardous parts; to provide a degree of protection of the equipment inside the enclosure against ingress of solid foreign objects (falling dirt); to provide a degree of protection with respect to harmful effects on the equipment due to the ingress of water (hose directed water and the entry of water during occasional temporary submersion at a limited depth); and that will be undamaged by the external formation of ice on the enclosure.

# NEMA CLASSIFICATIONS

## Type 6P

Enclosures constructed for either indoor or outdoor use to provide a degree of protection to personnel against access to hazardous parts; to provide a degree of protection of the equipment inside the enclosure against ingress of solid foreign objects (falling dirt); to provide a degree of protection with respect to harmful effects on the equipment due to the ingress of water (hose directed water and the entry of water during occasional prolonged submersion at a limited depth); that provides an additional level of protection against corrosion and that will be undamaged by the external formation of ice on the enclosure.

## Type 12

Enclosures constructed (without knockouts) for indoor use to provide a degree of protection to personnel against access to hazardous parts; to provide a degree of protection of the equipment inside the enclosure against ingress of solid foreign objects (falling dirt and circulating dust, lint, fibers, and flyings); and to provide a degree of protection with respect to harmful effects on the equipment due to the ingress of water (dripping and light splashing).

## Type 12K

Enclosures constructed (with knockouts) for indoor use to provide a degree of protection to personnel against hazardous parts; to provide a degree of protection of the equipment inside the enclosure against ingress of solid foreign objects (falling dirt and circulating dust, lint, fibers, and flyings); and to provide a degree of protection with respect to harmful effects on the equipment due to the ingress of water (dripping and light splashing).

## Type 13

Enclosures constructed for indoor use to provide a degree of protection to personnel against hazardous parts; to provide a degree of protection of the equipment inside the enclosure against

ingress of solid foreign objects (falling dirt and circulating dust, lint, fibers, and flyings); to provide a degree of protection with respect to harmful effects on the equipment due to the ingress of water (dripping and light splashing); and to provide a degree of protection against the spraying, splashing, and seepage of oil and non-corrosive coolants.

## Definitions – Hazardous Locations

### When completely and properly installed and

**maintained,** Type 7 and 10 enclosures are designed to contain an internal explosion without causing an external hazard. Type 8 enclosures are designed to prevent combustion through the use of oil-immersed equipment. Type 9 enclosures are designed to prevent the ignition of combustible dust.

### Type 7

Enclosures constructed for indoor use in hazardous (classified) locations classified as Class I, Division1, Groups A, B, C, or D as defined by NFPA 70.

### Type 8

Enclosures constructed for either indoor or outdoor use in hazardous (classified) locations classified as Class I, Division1, Groups A, B, C, or D as defined by NFPA 70.

### Type 9

Enclosures constructed for indoor use in hazardous (classified) locations classified as Class II, Division1, Groups E, F, or G as defined by NFPA 70.

### Type 10

Enclosures constructed to meet the requirements of the Mine Safety Health Administration, 30 CFR, Part 18.

## Comparison of NEMA Enclosures for Indoor Non-Hazardous Locations

Provides a Degree of Protection Against the Following Conditions	Type of Enclosure									
	1*	2*	4	4X	5	6	6P	12	12K	13
Access to hazardous parts	X	X	X	X	X	X	X	X	X	X
Ingress of solid foreign objects (falling dirt)	X	X	X	X	X	X	X	X	X	X
Ingress of water (dripping and light splashing)		X	X	X	X	X	X	X	X	X
Ingress of solid foreign objects (circulating dust, lint, fibers, and flyings**)			X	X		X	X	X	X	X
Ingress of solid foreign objects (settling airborne dust, lint, fibers, and flyings**)			X	X	X	X	X	X	X	X
Ingress of water (hosedown and splashing water)			X	X		X	X			
Oil and coolant seepage								X	X	X
Oil or coolant spraying and splashing										X
Corrosive agents				X			X			
Ingress of water (occasional temporary submersion)						X	X			
Ingress of water (occasional prolonged submersion)							X			

\* These enclosures may be ventilated.

\*\* These fibers and flyings are non-hazardous materials and are not considered Class III type ignitable fibers or combustible flyings. For Class III type ignitable fibers or combustible flyings see the National Electrical Code, Article 500.

