

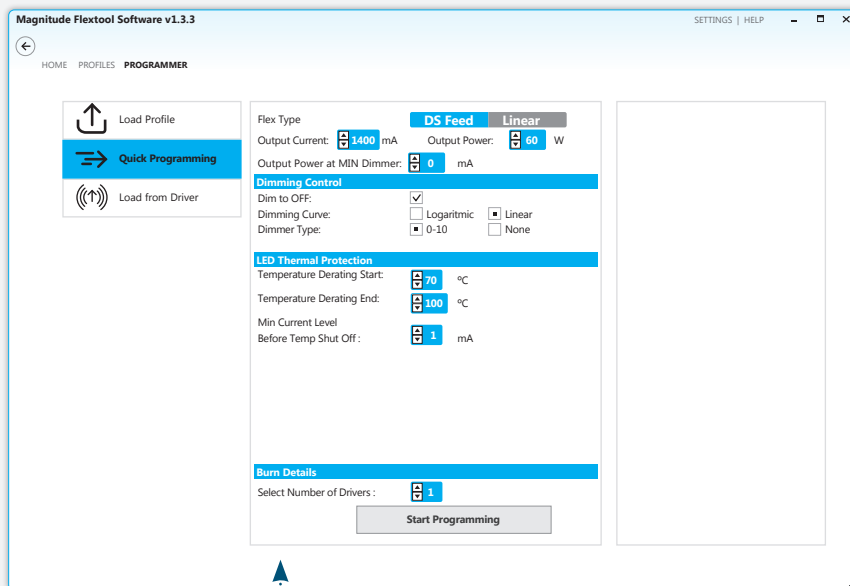
# Program Power with High Efficiency



With **FlexTool**, customers can quickly and easily configure multiple parameters of the driver in the shop or in the field. Our programming is one of the easiest in the industry and can be done in **less than one second**.

Windows based PC + USB Programming Tool  
Parameters Set Via FlexTool Software

Tap to Program  
Print Label & Go



- Wireless RFID Programming
- Quickly and easily configure multiple parameters of the driver without applying power
  - Input Power in Watts
  - Output Current in mA
  - Dimming Curve
  - Dim-to-Off Functionality
  - NTC Settings and More
  - Aux (Linear Version)

The FlexTool Software is a simple and intuitive program that allows you to adjust all the parameters needed to drive your lighting solution with more control and efficiency.

