

Microliter® MIC

Medium Beam Compact Floodlight

FLOODLIGHTING



- Die-cast aluminum housing is light weight, yet rugged
- Cast door frame hinges and is removable for servicing, two screw closure
- Tempered, impact resistant glass lens, silicone gasket provides seal
- Large 1/2" universal aiming swivel knuckle (1/2 x 14 NPS)
- Rotatable optics for best beam utilization, medium base lamp included
- Medium and spot distributions available from 150w Pulse Start source; Standard medium distribution covers two times set back distance
- HPF Quad-Tap® and NPF 120V systems available, consult ordering information
- Bronze powder coat protective finish
- Lamp included
- Listed to UL1598 for use in wet locations

ORDERING INFORMATION

Catalog Number ¹	Wattage	Photometry NEMA/IES H° x V°	Lamp Type	Voltage	Weight lbs. (kg)	EPA ft² (m²)	Ballast Type ²
High Power Factor, Pulse Start Metal Halide							
MIC-0150P-338¹	150	3 (32°) x 3 (36°)	Clear	120/208/240/277	14 (6.4)	0.71 (0.1)	PLA

¹ Quad-Tap® luminaires are shipped wired for 277V, easily changed to other voltages in the field

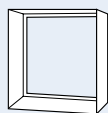
ACCESSORIES - Order Separately

Catalog Number	Description
MIC-GS-2	Glare shield (360°) bronze
MIC-SPC-2	Polycarbonate shield assembly
S-302-M51	Pole-top slipfitter for 1/2" knuckle, slipfits 2 3/8" OD pipe, bronze finish
PBT-1	Photocontrol, button type, 120V
TRN-XX¹	Trunnion adaptor for 1/2" threaded knuckle mount

¹ Specify color, eg. DB - Dark Bronze

REPLACEMENT PARTS

Catalog Number	Description
264-0292-9903	Lens
800-2827-0100	Bronze lens/door assembly
207-5011-0264	Bronze knuckle



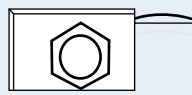
MIC-GS-2



MIC-SPC-2



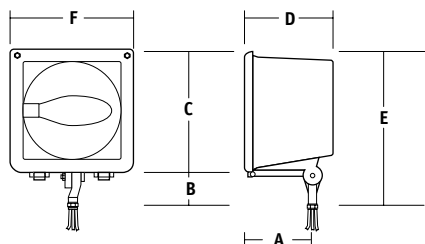
S-302-M51



PBT-1



TRN-XX



A	B	C	D	E	F
4 7/8"	2 1/2"	9 1/4"	7 3/8"	12 1/8"	9 1/4"
124 mm	64 mm	235 mm	187 mm	308 mm	235 mm



HUBBELL
Outdoor Lighting