

## ORDERING INFORMATION

### ACCESSORIES

(order separately)

Catalog #	Description
<b>B-LLR<sup>1</sup></b>	Lower Luminaire Retainer - 2' cable secures reflector to ballast housing
<b>B-TLR(6)<sup>1</sup></b>	6' Top Luminaire Retainer - chain secures ballast housing to structure when additional safety precautions are required
<b>B-TLR(10)<sup>1</sup></b>	10' Top Luminaire Retainer - chain secures ballast housing to structure when additional safety precautions are required
<b>B-TLR(12)<sup>1</sup></b>	12' Top Luminaire Retainer - chain secures ballast housing to structure when additional safety precautions are required
<b>B-TLR(16)<sup>1</sup></b>	16' Top Luminaire Retainer - chain secures ballast housing to structure when additional safety precautions are required
<b>BL-LR-14<sup>2</sup></b>	Tempered Glass Lens - thermal shock & impact resistant; gasketed on corrosion-resistant steel lens ring (not dust tight) required for 175, 250, 320 & 350 watt metal halide luminaires; for BI and BC reflector only
<b>BL-QO</b>	Quick-On 3/4" pendant mount
<b>BL-SO</b>	Slick-On Thru Wire Outlet Box for 3/4" pendant or 3/4, 1/2 side entry conduit
<b>BL-SOF</b>	Slick-On Single Fusing (fuse not incl.) thru wire outlet box for 3/4" pendant or 3/4, 1/2 side entry conduit mount with single fuse holder
<b>BL-SOFF</b>	Slick-On Double Fusing (fuses not incl.) thru wire outlet box for 3/4" pendant or 3/4, 1/2 side entry conduit mount with double fuse holder (not for Canada)
<b>WG-14</b>	14" Wireguard - corrosion resistant, welded steel w/ center lamp access

<sup>1</sup> Luminaire retainers/safety cables reduce risk of equipment falling.

<sup>2</sup> Bottom enclosures are required unless lamps designated as "suitable for open use" are used.

### MOUNTING ACCESSORIES

(order separately)

PLUGS ARE TWIST-LOCK® TYPE AS MANUFACTURED BY HUBBELL WIRING DEVICES.

Catalog #	Description
<b>BLA-C4HLP-1</b>	4' Cord, Hook/Loop and 120V 20A Twist-Lock® Plug
<b>BLA-C4HLP-4</b>	4' Cord, Hook/Loop and 277V 20A Twist-Lock® Plug
<b>BLA-C4HLP1-15A</b>	4' Cord, Hook/Loop and 120V 15A Twist-Lock® Plug
<b>BLA-C4HLP4-15A</b>	4' Cord, Hook/Loop and 277V 15A Twist-Lock® Plug
<b>H00K/LOOP<sup>1</sup></b>	Hook - cast aluminum 3/4" NPS male; includes safety screw; converts to Loop with strap included
<b>H3/4AL3/4<sup>1</sup></b>	Swivel Aligner - complete with box for thru wiring; all hubs tapped for 3/4" conduit - 25° swivel
<b>PHE-XXX<sup>1</sup></b>	Die Cast Aluminum Power Hook with 20A Twist-Lock® Receptacle - ceiling or 3/4" pendant mount, with 3/4" side entry for thru wiring 15" Cord, Hook/Loop & Twist-Lock® Plug (20 amp) included (for voltage replace XXX with 120, 208, 240, 277, 347, or 480)
<b>PHE-XXX-L<sup>2</sup></b>	As above, except cord, loop & plug not included (for voltage replace XXX with 120, 208, 240, 277, 347, or 480)
<b>PHS-XXX</b>	Specification Grade Power Hook - 30" cord dead front plug & receptacle with isolated wiring chamber; ceiling or 3/4" pendant mount, with 3/4" side entry for thru wiring; special safety feature locks Hook/Loop onto bottom hook (for voltage replace XXX with 120, 208, 240, 277, 347, or 480)
<b>PHS-XXX-L<sup>1,3</sup></b>	Specification Grade Power Hook - dead front receptacle with isolated wiring chamber; ceiling or 3/4" pendant mount, with 3/4" side entry for thru wiring; Cord, Hook/Loop and Dead Front Plug not included, must be ordered with luminaire (for voltage replace XXX with 120, 208, 240, 277, 347, or 480)
<b>SY3-XXX-2</b>	Rugged Steel Power Hook with 20A Twist-Lock® Receptacle - pendant or surface mount, 3/4" thru wiring capability; 30" Cord, Hook/Loop and Plug (20 amp) included (for voltage replace XXX with 120, 208, 240, 277, 347, or 480)
<b>SY3-XXX-L<sup>2</sup></b>	Porta-Hook includes integral mounting hook and 20A Twist-Lock® Receptacle; 3/4" knockouts on top and two sides; Cord, Hook/Loop and Plug (20 amp) not included (for voltage replace XXX with 120, 208, 240, 277, 347, or 480)

<sup>1</sup> CSA certified.

<sup>2</sup> Cord, Hook/Loop and Plug must be added to fixture as option, example: -C2HLP4.

<sup>3</sup> Cord, Hook/Loop and Dead Front Plug must be added to fixture as option, example: -DFP4.

NOTE: Cord used with above accessories is 16/3 SOWA 105°C NEMA configurations.

## QUICK ESTIMATOR BL-BI

LAMP QTY-LU/LP INPUT WATTS	SC @2/@4 LLF TEST #	ROOM WIDTH -/- MOUNTING HEIGHT (above floor)	ILLUMINANCE (MAINTAINED)				
			APPROXIMATE AREA PER LUMINAIRE (SQ. FT.) / APPROXIMATE WATTS PER SQ. FT.				
			(w/Blst. Losses)				
			10 fc	20 fc	50 fc	75 fc	100 fc
MH250/U (ENC)	1.5/1.5	5 or more	884 / 0.33	442 / 0.66	177 / 1.64	118 / 2.46	n.r. / n.r.
1 @ 20500	0.54	2	663 / 0.44	332 / 0.87	133 / 2.19	88 / 3.28	n.r. / n.r.
290	HP-03848A	1	497 / 0.58	249 / 1.17	99 / 2.91	66 / 4.37	n.r. / n.r.
MS400/BU/PS	1.3/1.4	5 or more	2238 / 0.20	1119 / 0.40	448 / 1.01	298 / 1.51	224 / 2.02
1 @ 44000	0.60	2	1659 / 0.27	830 / 0.54	332 / 1.36	221 / 2.04	166 / 2.72
452	HP-03802	1	1238 / 0.37	619 / 0.73	248 / 1.83	165 / 2.74	124 / 3.65
MH400/U	1.3/1.4	5 or more	1753 / 0.26	876 / 0.52	351 / 1.31	234 / 1.96	175 / 2.61
1 @ 36000	0.57	2	1299 / 0.35	650 / 0.71	260 / 1.76	173 / 2.64	130 / 3.53
458	HP-03802	1	969 / 0.47	485 / 0.95	194 / 2.36	129 / 3.54	97 / 4.73

To determine the number of luminaires required for a given illuminance level:

**Step 1:** Determine room size per column three below as 5 or more (Large Room), 2 (Medium Room) or 1 (Small Room).

**Step 2:** For desired footcandle level, per room size, divide floor area of space by "Approximate Area per Luminaire" from chart.

**Step 3:** If required, adjust result of Step 2 to "whole number." Result is quantity of luminaires required to provide approximate, average maintained illuminance selected.

Due to our continued efforts to improve our products, product specifications are subject to change without notice.



Industrial Lighting

Hubbell Industrial Lighting • 701 Millennium Boulevard • Greenville, SC 29607 • PHONE: 864-678-1000

For more information visit our web site: [www.hubbell-iltg.com](http://www.hubbell-iltg.com)

# SUPERBAY BI SERIES

14" ALUMINUM  
REFLECTOR

Cat. #		Approvals
Job	Type	



## APPLICATIONS

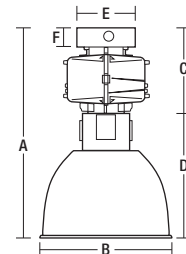
- Narrow, medium and wide lighting distributions for applications flexibility.

## SPECIFICATIONS

- Anodal® finished 14" diameter spun aluminum reflector.
- Field adjustable brackets provide narrow, medium and wide lighting distributions.
- Rugged, two-piece, die cast aluminum ballast housing with corrosion-resistant Lektrocote® white finish.
- Unit Pack available, see table below (lamp included in Unit Pack).

## LISTINGS

- Up to 55°C ambient, suitable for damp location, minimum 90°C supply conductors.



	A	B	C	D	E	F
<b>SLICK-ON®</b>	22 <sup>3</sup> / <sub>16</sub> "-24 <sup>7</sup> / <sub>16</sub> " 564-621 mm	14 <sup>1</sup> / <sub>4</sub> " 362 mm	9 <sup>1</sup> / <sub>2</sub> " 241 mm	9 <sup>7</sup> / <sub>16</sub> " 240 mm	9 <sup>1</sup> / <sub>2</sub> " 241 mm	2" 51 mm
<b>QUICK-ON®</b>	21 <sup>5</sup> / <sub>16</sub> "-23 <sup>9</sup> / <sub>16</sub> " 541-598 mm	14 <sup>1</sup> / <sub>4</sub> " 362 mm	8 <sup>5</sup> / <sub>8</sub> " 219 mm	9 <sup>7</sup> / <sub>16</sub> " 240 mm	9 <sup>1</sup> / <sub>2</sub> " 241 mm	1 <sup>1</sup> / <sub>8</sub> " 29 mm

## ORDERING INFORMATION

### ORDERING EXAMPLE

<b>BL</b>	-	<b>400</b>		<b>P</b>		<b>8</b>	-	<b>BI</b>	-	<b>WH</b>
Series		Wattage		Source		Voltage		Optics		Color

### SERIES

**BL** Superbay Series

### WATTAGE

<b>150</b>	150 watt HPS
<b>175</b>	175 watt MH or Pulse Start MH
<b>200</b>	200 watt Pulse Start MH only
<b>250</b>	250 watt MH, Pulse Start MH or HPS
<b>320</b>	320 watt Pulse Start MH only
<b>350</b>	350 watt Pulse Start MH or Electro-Reg®
<b>400</b>	400 watt MH, Pulse Start MH, HPS or Electro-Reg®
<b>450</b>	450 watt Pulse Start MH only

### SOURCE

<b>H</b>	Metal Halide (export only)
<b>S</b>	High Pressure Sodium
<b>P</b>	Pulse Start Metal Halide
<b>E</b>	Electro-Reg® (40°C)

### VOLTAGE

<b>1</b>	120V Electro-Reg®
<b>2</b>	208V Electro-Reg®
<b>3</b>	240V Electro-Reg®
<b>4</b>	277V Electro-Reg®
<b>5</b>	480V
<b>6</b>	Tri-Tap® - 120/277/347V
<b>7</b>	600V (isolated secondary only)
<b>8</b>	Quad-Tap® (multi-tap) - 120/208/240/277V
<b>F</b>	347V

### OPTICS

**BI** 14" Spun Aluminum Highbay Reflector with uplight

### BOTTOM ENCLOSURE

**BL-LR-14** Bottom Enclosure

### COLOR

**WH** White (standard)  
**GR** Gray (optional)

NOTE: MV lamp will operate on MH ballast.

NOTE: Energy Saving Linear Reactor Pulse Start ballast available, consult factory (277V only).

NOTE: Bottom enclosures are required unless lamps designated as "suitable for open use" are used.

NOTE: Options must be added as suffix to Catalog Number. Accessories must be ordered separately.

## BI UNIT PACKS

MATERIAL	MATERIAL DESCRIPTION	WATTAGE	VOLTAGE	LAMP BASE	LAMP INCLUDED
<b>METAL HALIDE PULSE START</b>					
BL320P8BCEXUPL	BL-320P8-BC-WH-EX-UPL	320	Quad-Tap	Exclusionary	Lamp Included
BL320P8BCWHUPL	BL-320P8-BC-WH-UPL	320	Quad-Tap	Mogul	Lamp Included
BL400P8BCEXUPL	BL-400P8-BC-WH-EX-UPL	400	Quad-Tap	Exclusionary	Lamp Included
BL400P8BCWHUPL	BL-400P8-BC-WH-UPL	400	Quad-Tap	Mogul	Lamp Included
<b>HIGH PRESSURE SODIUM</b>					
BL400S8WHBIUPL	BL-400S8-WH-BI-UPL	400	Quad-Tap	Mogul	Lamp Included