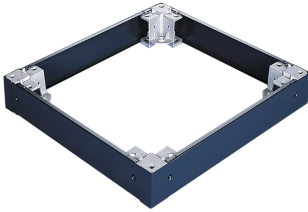


## PROLINE 100-MM PLINTH BASE, FITS 800X800MM, BLACK, STEEL

### CATALOG NUMBER

**PPB188**



Plinth Bases install under an enclosure to provide space for cables to enter from below. A Plinth Base consists of four corner supports connected to four access panels. The corner supports are cast aluminum. The access panels attach to the corner supports with screws. All necessary mounting hardware included. Order a gland plate system to provide Type 12 protection when using a Plinth Base.

### FEATURES

All necessary mounting hardware included

Order with a gland plate system to provide Type 12 protection when using a Plinth Base

### PRODUCT ATTRIBUTES

Article Number: 97450

Material: Mild Steel

Fits Frame: 800 x 800 mm

Color: Jet Black

Color Code: RAL 9005

Finish: Powder Coated

Thickness: 1.52 mm

### WARNING

nVent products shall be installed and used only as indicated in nVent's product instruction sheets and training materials. Instruction sheets are available at [www.nvent.com](http://www.nvent.com) and from your nVent customer service representative. Improper installation, misuse, misapplication or other failure to completely follow nVent's instructions and warnings may cause product malfunction, property damage, serious bodily injury and death and/or void your warranty.



Our powerful portfolio of brands:  
**nVent.com CADDY ERICO HOFFMAN RAYCHEM SCHROFF**  
**TRACER**