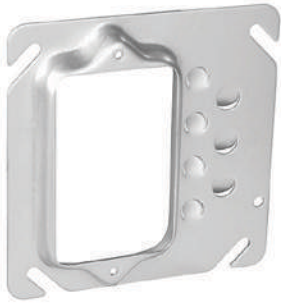


4" SQUARE SINGLE GANG DEVICE RINGS

OFFSET FOR TRIM MOLDINGS



52C11



FEATURES

- Offset device ring design positions wiring device away from finish trim moldings
- Angled slots on the covers compensate for up to 12° of box misalignment on upright framing members

APPLICATIONS

- 4" square single device rings are used with 4" square boxes to mount switches, receptacles and devices

STANDARD MATERIAL

- Galvanized steel

CERTIFICATIONS

- UL, cULus Listed

PART #	DESCRIPTION	RAISED	CUBIC INCHES (CM³)	MASTER QTY.
52C09	FLAT	---	---	25
52C10	RAISED	1/4"	1.5 (24.6)	25
52C11	RAISED	1/2"	3.5 (57.3)	25
52C12	RAISED	5/8"	4.5 (73.7)	25
52C12-3/4	RAISED	3/4"	5.5 (90.1)	25
52C12-1	RAISED	1"	7.5 (122.9)	25

4" SQUARE SINGLE GANG EXTRA SLIM DEVICE RING

5/8" RAISED



52C2-5/8

FEATURES

- Angled slots on the covers compensate for up to 12° of box misalignment on upright framing members

APPLICATIONS

- 4" square single device rings are used with 4" square boxes to mount switches, receptacles and devices
- Eliminates the need for a backplate when using narrow fixtures or devices

STANDARD MATERIAL

- Galvanized steel

PART #	DESCRIPTION	RAISED	MASTER QTY.
52C2-5/8	RAISED	5/8"	50