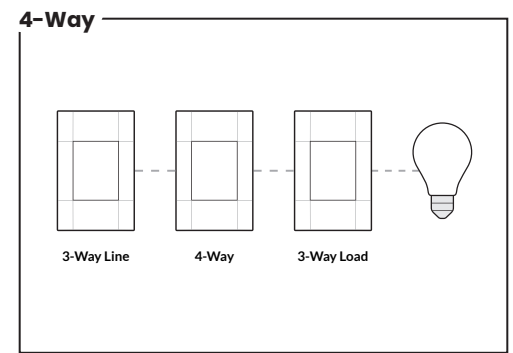
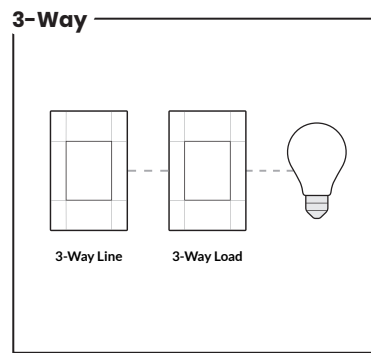
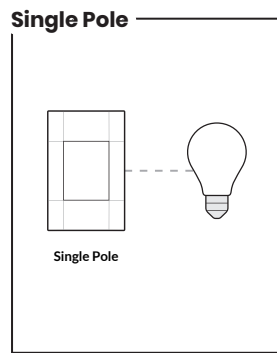


Deako Backplate & Simple Switch

INSTALLATION GUIDE



1. Trim or strip wallbox wires to the length indicated by the strip gauge on the backplate (5/8").
2. Grip wire firmly and push connector into open port.
3. Backplate wiring is **polarity-sensitive**, be sure travelers exactly match the diagram.
4. Always connect neutral wire to associated backplate terminal. Backplates with two or more gangs have a second neutral terminal, optionally use these as jumpers between gangs (see diagram).

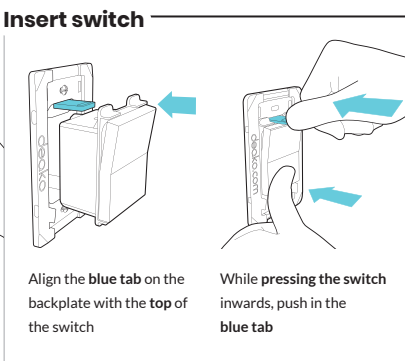
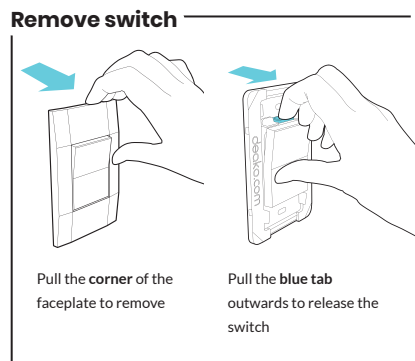
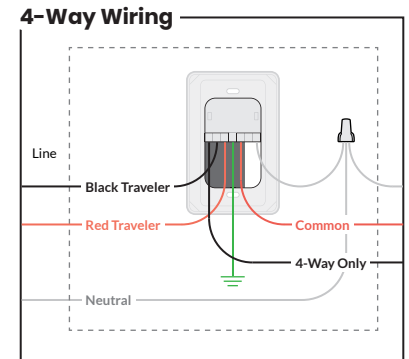
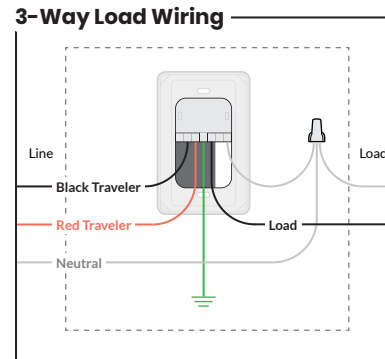
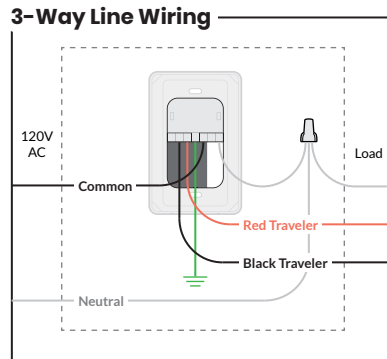
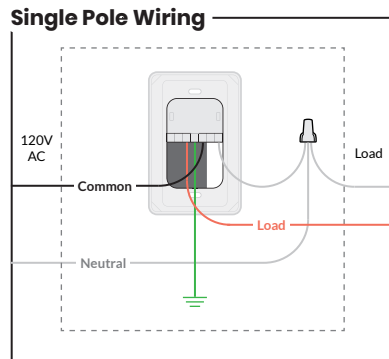
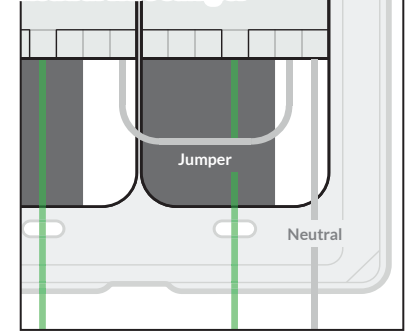
5. **Additional setup** is required for Smart Switches & Dimmers when installed in 3-way & 4-way circuits (see instructions included with Smart Switches & Smart Dimmers).
6. **Do not mix** Simple Switches with Smart Switches or Smart Dimmers in the same circuit.
7. Backplates are to be installed in accordance with all national and local electrical codes. Refer to NEC Article 314 and CEC Section 12 for box and conductor fill specifications.

Multi-gang note: When appropriate, use a pigtail to connect to the associated wires in the junction box.

Specifications

- DS-SS1N: Single pole circuits
- DS-SS4N: Single pole, 3-way, & 4-way circuits
- 15A resistive / general use
- 120 VAC 60Hz

Neutral Wire Jumper



DANGER - ELECTRICAL HAZARD

Turn off power before servicing

1-844-673-3256

For full instructions, visit support.deako.com

NOTICE: Use with copper wire only.

DIMMERS ONLY CAUTION

To reduce the risk of overheating and possible damage to other equipment, do not install to control a receptacle, a motor-operated appliance, a fluorescent lighting fixture, or a transformer-supplied appliance.

NON-MODIFICATION WARNING:

WARNING: Changes or modifications to this device not expressly approved by the manufacturer could void the user's authority to operate the equipment. Wiring means should be suitable under the NEC and CEC, such as with the use of UL Listed wire nuts. Suitable for indoor/dry locations only. Suitable for use with copper wires only.

To reduce the risk of overheating and possible damage to other equipment, do not install a Device where the marked ampere rating exceeds the marked ampere rating of the Deako Backplate.



WARNING: Cancer and Reproductive Harm - www.P65Warnings.ca.gov

© 2020 Deako
4201 Roosevelt Way NE #100 Seattle, WA 98105, USA

