

# RL56 Series



**RL56 - 600 Series**



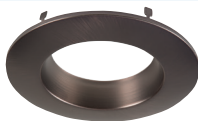
**RL56 - 900 Series**

- 600 Series: up to 671 lumens (lumens per selected CCT and CRI)  
900 Series: up to 1100 lumens (lumens per selected CCT and CRI)
- 600 Series: use to replace 65W BR30 or 50W PAR30 lamp  
900 Series: use to replace 75W PAR30 lamp
- 2700K, 3000K, 3500K, 4000K Correlated Color Temperature (CCT)
- 80 CRI or 90 CRI
- 600 Series: 7.2W - 9.6W (per CRI and CCT), 120V  
900 Series: 13.5W, 120V
- Halo matte white finish
- Torsion springs preinstalled
- Optional Push-N-Twist universal installation clips pre-installed
- Compatible with most 5" and 6" standard and shallow recessed housings
- Dimmable to 5% with select dimmers
- Damp and wet location listed (shower rated)
- Rated for IC, ICAT and may be used in Non-IC housings
- AIR-TITE™ certified per ASTM-E283
- Diffusing, regressed lens
- Five-year limited warranty

## RL56 Designer Trims (Order Separately)



**RL56TRMWH**  
White (Paintable)



**RL56TRMTBZ**  
Tuscan Bronze



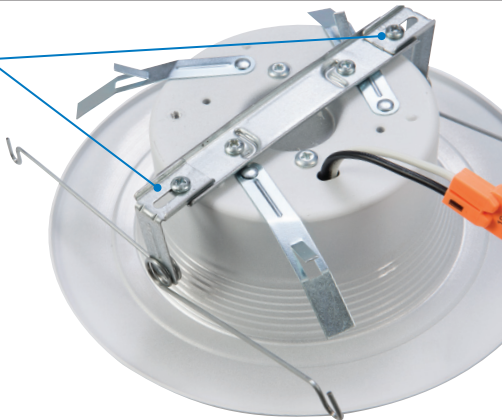
**RL56TRMSN**  
Satin Nickel



<sup>Δ</sup> Savings are over the life of the Halo RL56 luminaire.  
Energy savings: \$430  
Replacement lamp savings: \$100  
Savings based on \$0.155 per kilowatt hour, average six hours use per day, 50,000 hours of lamp usage, and 65W BR30 Halogen lamp lumen equivalent.

# 5" / 6" LED Retrofit Downlight 600 and 900 Series

**Torsion Springs**



Example:  
RL56-600 Series



**5 Inch housing position**



**6 Inch housing position**

**Push-N-Twist**

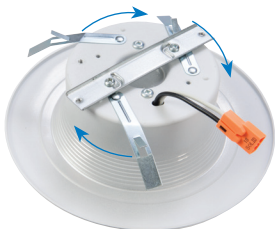
Universal Installation Clip



Example:  
RL56-600 Series



To use the Push-N-Twist clips, the torsion springs must be removed. Do not remove the main bracket.



Once the torsion springs are removed, rotate the clips into position and install into the housing.

# RL56 Series

## Ordering Information

Sample Number: **RL560WH6827**  
Order Halo housing separately.

### RL56 600 Series – 5"/6" LED Retrofit Baffle - Trim

#### 80 CRI

**RL560WH6827**= 80 CRI, 2700K  
**RL560WH6830**= 80 CRI, 3000K  
**RL560WH6835**= 80 CRI, 3500K  
**RL560WH6840**= 80 CRI, 4000K

#### 90 CRI

**RL560WH6927**= 90 CRI, 2700K  
**RL560WH6930**= 90 CRI, 3000K  
**RL560WH6935**= 90 CRI, 3500K  
**RL560WH6940**= 90 CRI, 4000K

### RL56 900 Series – 5"/6" LED Retrofit Baffle - Trim

#### 80 CRI

**RL560WH9827**= 80 CRI, 2700K  
**RL560WH9830**= 80 CRI, 3000K  
**RL560WH9835**= 80 CRI, 3500K  
**RL560WH9840**= 80 CRI, 4000K

#### 90 CRI

**RL560WH9927**= 90 CRI, 2700K  
**RL560WH9930**= 90 CRI, 3000K  
**RL560WH9935**= 90 CRI, 3500K  
**RL560WH9940**= 90 CRI, 4000K

### LED Housings (Order Separately)

See Housing Compatibility, Page 13

### Accessories (Order Separately)

**RL56TRMSN**=Satin Nickel Trim Ring

**RL56TRMTBZ**=Tuscan Bronze Trim Ring

**RL56TRMWH**=White Paintable Trim Ring

**OT400P**=Oversize Flat White Metal Trim Ring, 6" I.D. x 9-1/4" O.D. (Ring slips behind RL56 ring in stepped configuration.)

**OT403P**=Oversize White Plastic Trim Ring, 6" I.D. x 8" O.D. (Ring slips behind RL56 ring in stepped configuration.)

**TRM690WH**=Oversize Matte White Metal Trim Ring. Designed for RL56 ring to inset into oversize ring for an even (non-stepped) trim surface.

**HE26LED**=Replacement screw base adapter (one included with unit)



**HE26LED**  
Edison Base Adapter  
for retrofit (included)



### 90 CRI



Can be used to comply with California Title 24 High Efficacy requirements. Certified to California Title 20 Appliance Efficiency Database.

### 80 CRI



Can be used to comply with California Title 24 Non-Residential Lighting Controls requirements as a LED Luminaire.



Refer to ENERGY STAR® Certified Products List.