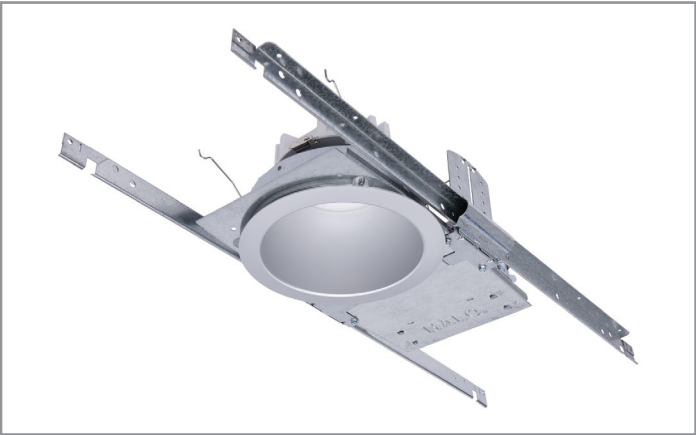


Project		Catalog #		Type	
Prepared by		Notes		Date	



HALO Commercial

HC6 | HM6 | 61 | 61PS

6-inch LED downlight and wall wash

Typical Applications

Office • Healthcare • Hospitality • Institutional • Mixed-Use/Retail

Interactive Menu

- Order Information [page 2](#)
- Product Specifications [page 4](#)
- Photometric Data [page 5](#)
- Energy & Performance Data [page 8](#)
- Connected Systems [page 10](#)
- Product Warranty

Top Product Features

- New construction/remodel series; 500 to 6,000 lumens
- Narrow, Medium and Wide distributions; Wall wash with rotatable linear spread lens
- 2700K, 3000K, 3500K, 4000K, 5000K CCT; 80 or 90 CRI
- Universal voltage 120V-277V; Standard 0-10V driver dims to 1%
- Mounting frame converts to remodel that installs from below the ceiling
- Quick Spec emergency backup mounting frames - fast delivery option

Product Certification



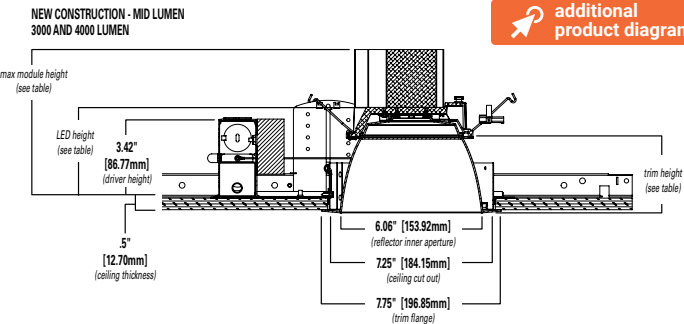
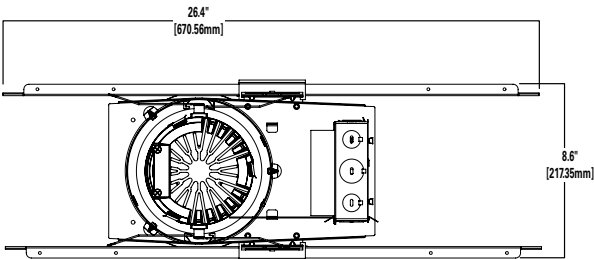
Product Features



Control Compatibility



Dimensional and Mounting Details



[additional product diagrams](#)

Mid Lumen (3000 – 4000 Lumens)

Distribution	Max. Module Height	Trim Height	LED Height
Narrow	6.6"	3.4"	3.8"
Medium	6.7"	3.5"	3.9"
Wide	6.5"	3.3"	3.7"
Baffle	6.5"	3.3"	3.7"

Mounting Frame Order Information

Sample Number: HC620D010REM7 – HM60525835 - 61MDC

A complete luminaire consists of a housing frame, LED module, and reflector (ordered separately)

Mounting Frame	Lumens	Driver Options	Factory Installed Emergency & Connected Lighting Options	Accessories (Order & Install Separately)
HC6 = 6" new construction downlight housing HC6CP = 6" new construction housing, Chicago Plenum - CCEA compliant	05 = 500 lm 07 = 750 lm 10 = 1000 lm 15 = 1500 lm 20 = 2000 lm 25 = 2500 lm 30 = 3000 lm 35 = 3500 lm 40 = 4000 lm 45 = 4500 lm ⁽⁷⁾ 50 = 5000 lm ⁽⁷⁾ 55 = 5500 lm ⁽⁷⁾ 60 = 6000 lm ⁽⁷⁾	D010 =UNV 120-277V, 50/60Hz, 0-10V 1%-100% dimming at 120-277V on 0-10V controls Canada Option 500-4000 lumens: D010347 = 347VAC 50/60Hz 0-10V 1%-100% dimming. For 500, 750, 1000, 1500, 2000, 2500, 3000, 3500, 4000lm models only ⁽¹⁾ Canada Option 4500-6000 lumens: D010X347 = step down transformer factory installed (with standard "D010" 120V-277V LED driver). For 4500, 5000, 5500, 6000lm models only ⁽¹⁾ DLV = Distributed Low Voltage dimming driver 1%-100%, 1000-4000 lumens only. For use with DLVP system only, refer to DLVP specifications for details. ⁽¹⁾	REM7 = 7 watt emergency battery pack with remote test / indicator light, use with D010 only ^{(1) (2) (6)} REM14 = 14 watt emergency battery pack with remote test / indicator light, use with D010 only ^{(1) (2) (6)} IEM7 = 7 watt emergency battery pack with integral test / indicator light, use with D010 only ^{(1) (2) (6)} IEM14 = 14 watt emergency battery pack with integral test / indicator light, use with D010 only ^{(1) (2) (6)} B0D7ST = 7.5 watt Bodine self-test emergency battery pack with remote test / indicator light, use with D010 only ^{(1) (2) (6)} WTA = Factory WaveLinX PRO Tilemount Sensor Kit ⁽⁴⁾ WTK = Factory WaveLinX LITE Tilemount Sensor Kit ⁽⁵⁾ WPN = WaveLinX PRO Wireless Node without Sensor ⁽⁹⁾ WLN = WaveLinX LITE Wireless Node without Sensor ⁽¹⁰⁾ REM7V = 7 watt emergency battery pack with remote test / indicator light, use with DLV only ^{(1) (2) (3) (6)} REM14V = 14 watt emergency battery pack with remote test / indicator light, use with DLV only ^{(1) (2) (3) (6)} IEM7V = 7 watt emergency battery pack with integral test / indicator light, use with DLV only ^{(1) (2) (3) (6)} IEM14V = 14 watt emergency battery pack with integral test / indicator light, use with DLV only ^{(1) (2) (3) (6)}	HB128APK = L channel hanger bar, 26", pair (replacement) RMB22 = Adjustable wood joist mounting bars, pair, extend to 22" long HSA6 = Slope Adapter for 6" Aperture Housings, Specify Slope (refer to instructions for installing housing and trim) H347 = 347 to 120V step down transformer, 75VA H347200 = 347 to 120V step down transformer, 200VA WTA = Field WaveLinX PRO Tilemount Sensor Kit ⁽⁴⁾ WTK = Field WaveLinX LITE Tilemount Sensor Kit ⁽⁵⁾
Notes	Notes	Notes	Notes	Notes
	(7) Marked Spacing: Center to Center of Adjacent Luminaires = 36" Center of Luminaire to Building Member = 18" Minimum overhead = 0.5	(1) Not available with CP models	(1) Not available with CP models (2) Not available with D010347 (347V models) (3) ULus for U.S. only (4) WTA = WaveLinX PRO tilemount sensor kit for daylight dimming, PIR motion sensing, and optional RLTS - Real Time Location Services, use with D010 only. (Refer to WaveLinX PRO specifications.) (5) WTK = WaveLinX LITE tilemount sensor kit for daylight dimming, PIR motion sensing, use with D010 only. (Refer to WaveLinX LITE specifications.) (6) Emergency battery backup options are Non-IC only, and rated for a minimum starting temperature of 0°C (9) WPN = WaveLinX PRO wireless node provides luminaire-level control with scene and zone configuration without an integrated sensor; Connects wirelessly with daylight dimming sensor and PIR motion sensor if desired. Use with 0-10V driver only. Not compatible with 347V or Chicago plenum. (Refer to WaveLinX PRO specifications.) (10) WLN = WaveLinX LITE wireless node provides luminaire-level control with scene and zone configuration without an integrated sensor; Connects wirelessly with daylight dimming sensor and PIR motion sensor if desired. Use with 0-10V driver only. Not compatible with 347V or Chicago plenum. (Refer to WaveLinX LITE specifications.)	(4) WTA = WaveLinX PRO tilemount sensor kit for daylight dimming, PIR motion sensing, and optional RLTS - Real Time Location Services, use with D010 only. (Refer to WaveLinX PRO specifications.) (5) WTK = WaveLinX LITE tilemount sensor kit for daylight dimming, PIR motion sensing, use with D010 only. (Refer to WaveLinX LITE specifications.)

Quick Spec Emergency Mounting Frame Order Information

Sample Number:

Quick Spec Emergency Mounting Frame: RR-HC620D010REM7

LED module and reflectors are ordered separately.

Order separately: LED Module: HM60525835 | Reflector: 61MDC

Select from the Quick Spec Mounting Frame ordering information to receive the **Fast Delivery** option for the frame.

Quick Spec Code	Mounting Frame	Lumens	Driver Options	Factory Installed Emergency & Connected Lighting Options	Accessories (Order & Install Separately)
RR = East Region BRR = West Region	HC6 = 6" new construction downlight housing	10 = 1000 lm 15 = 1500 lm 20 = 2000 lm 30 = 3000 lm 40 = 4000 lm	D010 =UNV 120-277V, 50/60Hz, 0-10V 1%-100% dimming at 120-277V on 0-10V controls	REM7 = 7 watt emergency battery pack with remote test / indicator light, use with D010 only ^{(2) (6)} REM14 = 14 watt emergency battery pack with remote test / indicator light, use with D010 only ^{(2) (6)} IEM7 = 7 watt emergency battery pack with integral test / indicator light, use with D010 only ^{(2) (6)} IEM14 = 14 watt emergency battery pack with integral test / indicator light, use with D010 only ^{(2) (6)}	HB128APK = L channel hanger bar, 26", pair (replacement) RMB22 = Adjustable wood joist mounting bars, pair, extend to 22" long
Notes	Notes	Notes	Notes	Notes	Notes
				(2) Not available with D010347 (347V models) (6) Emergency battery backup options are Non-IC only, and rated for a minimum starting temperature of 0°C	

LED Module Order Information

LED Module	Lumens	CRI/CCT	
HM6 = 6" LED Modules For use with HC6 - HC6CP New Construction housings only	0525 = 500 - 2500 lumen 3040 = 3000-4000 lumen 4560 = 4500-6000 lumen	827 = 80CRI, 2700K 830 = 80CRI, 3000K 835 = 80CRI, 3500K 840 = 80CRI, 4000K 850 = 80CRI, 5000K	927 = 90CRI, 2700K 930 = 90CRI, 3000K 935 = 90CRI, 3500K 940 = 90CRI, 4000K 950 = 90CRI, 5000K
Notes	Notes	Notes	

Trim Order Information

Reflector	Distribution ⁽⁸⁾	Finish	Flange	Accessories
61 = 6" conical reflector	ND = narrow 55° beam angle 0.97 SC MD = medium 60° beam angle 1.10 SC WD = wide 65° beam angle 1.28 SC RWW = rotatable wall wash with linear spread lens	C = Specular clear H = Semi-specular clear W = White	Blank = Polished flange standard with C & H reflectors Blank = White flange standard with W reflector WF = White flange option available with C & H reflectors BF = Black Flange option available with C, H & W reflectors	61RWWPK = Replacement part kit - wall wash lens insert - for use with 61RWW* only.
Notes	Notes (8) Values are nominal, with specular clear reflector, other finishes and field results may vary.	Notes	Notes	Notes

Baffle	Distribution ⁽⁸⁾	Finish	Flange	Accessories
61 = 6" baffle reflector	WD = wide 65° beam angle 1.28 SC (nominal) RWW = rotatable wall wash with linear spread lens	BB = Black baffle WB = White baffle	Blank = White flange standard with BB, & WB reflectors BF = Black flange option available with BB reflectors	61RWWPK = Replacement part kit - wall wash lens insert - for use with 61RWW* only.
Notes	Notes (8) Values are nominal, with specular clear reflector, other finishes and field results may vary.	Notes	Notes	Notes

Reflector	Distribution ⁽⁸⁾	Finish	Flange
61PS = 6" non-conductive polymer 'dead front' conical reflector ⁽⁹⁾	MD = medium 60° beam angle 1.10 SC (nominal)	W = White	Blank = White flange standard with W reflector BF = Black Flange option available with W reflectors
Notes (9) 61PS is 1000-2000 lumens Non-IC rated. 500 & 750 lumens IC rated. 61PS is not for use over 2000lm in Non-IC or over 750lm in IC.	Notes (8) Values are nominal, with specular clear reflector, other finishes and field results may vary.	Notes	Notes

IEM Reflector	Distribution ⁽⁸⁾	Finish	Flange	Integral Emergency
61 = 6" IEM reflector for integral emergency only	ND = narrow 55° beam angle 0.97 SC MD = medium 60° beam angle 1.10 SC WD = wide 65° beam angle 1.28 SC	C = Specular clear H = Semi-specular clear W = White	Blank = Polished flange standard with C & H reflectors Blank = White flange standard with W reflector WF = White flange option available with C & H reflectors BF = Black flange option available with C, H, & W reflectors	IEM = Reflector for use with integral emergency housings only. Provides access hole for integral emergency test switch.
Notes	Notes (8) Values are nominal, with specular clear reflector, other finishes and field results may vary.	Notes	Notes	Notes

IEM Baffle	Distribution ⁽⁸⁾	Finish	Flange	Integral Emergency
61 = 6" IEM baffle reflector for integral emergency only	WD = wide 65° beam angle 1.28 SC (nominal)	BB = Black baffle WB = White baffle	Blank = White flange standard with BB, & WBreflectors BF = Black flange option with BB reflectors	IEM = Reflector for use with integral emergency housings only. Provides access hole for integral emergency test switch.
Notes	Notes (8) Values are nominal, with specular clear reflector, other finishes and field results may vary.	Notes	Notes	Notes