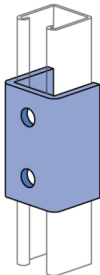
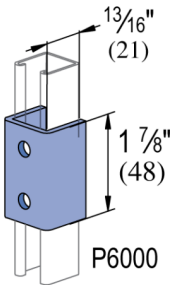
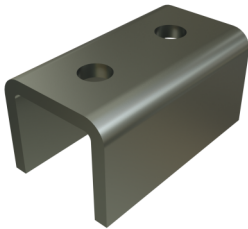


P6376 - Fittings (13/16" Series)

Atkore’s U-shape fittings offer strong, stable support for parallel channel connections and perpendicular bracing. With a wide range of configurations and hole patterns, they provide reliable alignment and flexibility—no matter the application—while integrating seamlessly with Atkore and Power-Strut systems.

Features

- For use with 13/16" wide channel
- Holes for 3/8" fasteners
- EG coated for corrosion protection



Standard Dimensions:

- Hole Diameter: 9/32" (7.1mm)
- Hole Spacing (From End): 13/32" (10.3mm)
- Hole Spacing (On-Center): 1 1/16" (27.0mm)
- Width: 13/16" (20.6mm)
- Thickness: 1/8" (3.2mm)

Materials & Finishes:

- Electrogalvanized (EG): Conforms to ASTM B633, Type III SC1 or SC3



Catalog Number	Material Type	Surface Finish	Part Weight (lb/ea)	Standard Package Weight (lb)
P6376 EG	Steel	Electrogalvanized	0.17	4.25