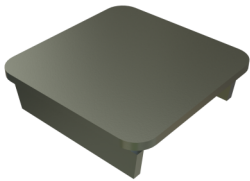


P1180W thru P5580W - End Cap  
(1-5/8" Series)

End Cap P1280 is designed to press into Atkore's A1000 strut channel. This product can be used as part of a strut-type raceway, to cover sharp or unprotected cut ends, or to cover the end of the channel for any other purpose.

Features

- Use with P1100, P4000, P5000 and P5500 strut channel (per table)
- UL and CSA listed
- EG coated for corrosion protection



Catalog Number	Material Type	Surface Finish	Part Weight (lb/ea)	Standard Package Weight (lb)
P4280W EG	Steel	Electrogalvanized	0.05	5
P1180W EG	Steel	Electrogalvanized	0.12	12
P5280W EG	Steel	Electrogalvanized	0.3	15
P1280W EG	Steel	Electrogalvanized	0.11	11
P5580W EG	Steel	Electrogalvanized	0.18	9
P1280W ZD	Steel	Zinc Dichromate	0.11	11