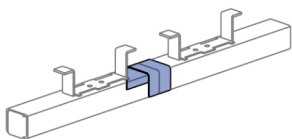
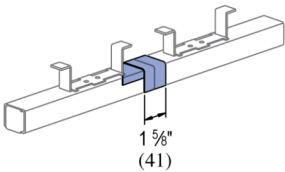
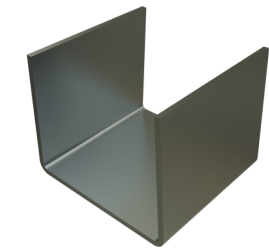


P3663 & P4663 - Joint Covers
(1-5/8" Series)

Features

- Use with Atkore's channel style concrete inserts
- Protects joints from concrete seepage
- Pregalvanized for corrosion protection



Catalog Number	Material Type	Surface Finish	Part Weight (lb/ea)	Standard Package Weight (lb)
P3663 EG	Steel	Electrogalvanized	0.1	5
P4663 EG	Steel	Electrogalvanized	0.06	6