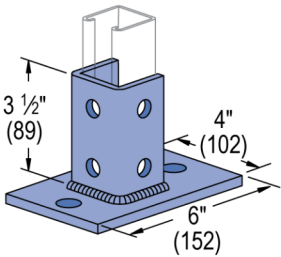
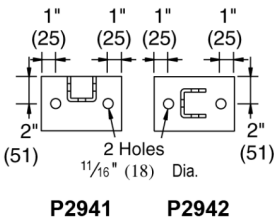
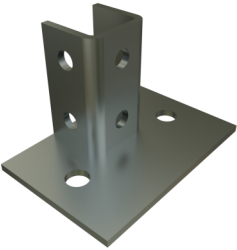


P2941 & P2942 - Post Base (1-5/8" Series)

Atkore Post Base is designed to securely fasten Atkore channel and Telestrut system to a solid surface including concrete.

Features

- Post base to anchor strut channel to floors (most common), walls or ceilings
- (2) 11/16" mounting holes for 5/8" anchors
- 4" x 6" base, 2-hole strut mount
- 2 orientation options



Catalog Number	Material Type	Surface Finish	Part Weight (lb/ea)	Standard Package Weight (lb)
P2941 DF	Steel	Defender	2.95	29.5
P2942 DF	Steel	Defender	2.78	27.8
P2942 EG	Steel	Electrogalvanized	2.78	27.8
P2941 EG	Steel	Electrogalvanized	2.78	27.8
P2941 GR	Steel	Green E-Coat	2.78	27.8
P2942 GR	Steel	Green E-Coat	2.78	27.8
P2941 HG	Steel	Hot-Dip Galvanized	2.95	29.5
P2942 HG	Steel	Hot-Dip Galvanized	2.95	29.5
P2942 SS	Stainless Steel - 304		2.78	27.8
P2941 SS	Stainless Steel - 304		2.78	27.8
P2941 ST	Stainless Steel - 316		2.78	27.8
P2942 ST	Stainless Steel - 316		2.78	27.8
P2942 ZD	Steel	Zinc Dichromate	2.78	27.8
P2941 ZD	Steel	Zinc Dichromate	2.78	27.8
P2942 BL	Aluminum	Black Anodized	2.78	27.8