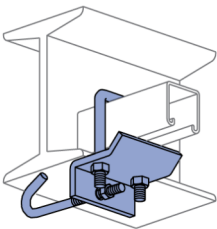
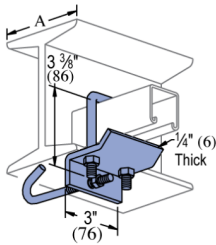
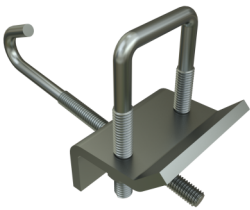


P2867 - Beam Clamp for 4" - 12" Wide Beams

Features

- Use with P1000, P1100, P3000, P3300, P3301, P4000, P4001, P4100 and P4101 channels
- Beam flange widths: 4" to 18"
- J-bolt retains clamp to beam
- Includes J-bolt, U-bolt and hex nuts
- Load capacity governed strength of strut channel and beam flange
- This series is available in Electrogalvanized (EG)



- Includes J-Bolt, U-Bolts and Hex Nuts
- For use with P1000, P1100, P2000, P3000, P3300, P3301, P4000, P4001, P4100, and P4101 Channels

Materials & Finishes:

- **Electrogalvanized (EG):** Conforms to ASTM B633, Type III SC1 or SC3



Catalog Number	Trade Size	Material Type	Surface Finish	Part Weight (lb/ea)	Standard Package Weight (lb)
P2867 EG	4 <sup>6</sup>	Steel	Electrogalvanized	1.34	33.5
P2867-9 EG	6 <sup>9</sup>	Steel	Electrogalvanized	1.52	38
P2867-12 EG	9 <sup>12</sup>	Steel	Electrogalvanized	1.79	44.75
P2867-15 HG	12 <sup>15</sup>	Steel	Hot-Dip Galvanized	1.55	1.55