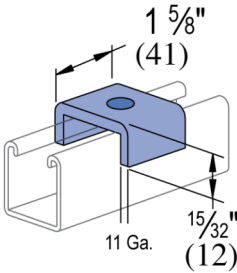
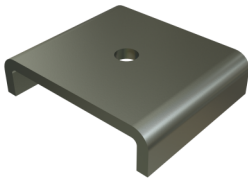


P2800-25 thru P2800-75 - 1 Hole, "U" Shape Fitting

Atkore's U-shape fittings offer strong, stable support for parallel channel connections and perpendicular bracing. With a wide range of configurations and hole patterns, they provide reliable alignment and flexibility—no matter the application—while integrating seamlessly with Atkore and Power-Strut systems.

Features

- Steel: ASTM A1011 SS GR 33
- Holes for 1/2" fasteners
- Variety of material and finish options



| Catalog Number | Trade Size | Material Type | Surface Finish | Part Weight (lb/ea) | Standard Package Weight (lb) |
|----------------|------------|---------------|-------------------|---------------------|------------------------------|
| P2800-25 EG | ¼ | Steel | Electrogalvanized | 0.14 | 14 |
| P2800-37 EG | ¾ | Steel | Electrogalvanized | 0.15 | 14.9 |
| P2800-50 EG | ½ | Steel | Electrogalvanized | 0.14 | 14 |
| P2800-50 ZD | ½ | Steel | Zinc Dichromate | 0.14 | 14 |
| P2800-62 EG | ⅝ | Steel | Electrogalvanized | 0.13 | 13 |
| P2800-75 EG | ¾ | Steel | Electrogalvanized | 0.13 | 13 |