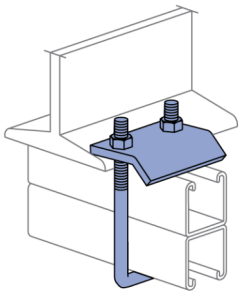
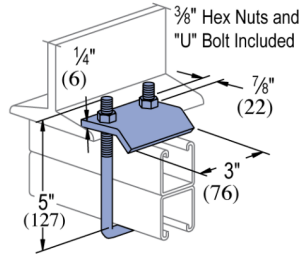
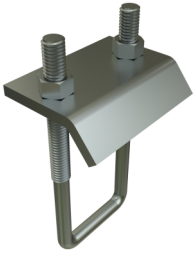


## P2786 - Beam Clamp

U-Bolt Beam Clamp is designed with an adjustable height to be used with many Atkore channels. This clamp has a High capacity for heavy load requirements and is easy to install.

### Features

- Vertical Design Load: 1,000 lbs per clamp (2,000 lbs per pair). Must use in pairs.
- Use with P1001, P1101, P3001, P5000 and P5500
- Vertical and horizontal load capacities
- This series is available in Electrogalvanized (EG), Atkore Defender (DF), Hot-Dip Galvanized (HG), and Stainless Steel (SS).



### Standard Dimensions (Unless Shown Otherwise on Drawing):

- **Hole Diameter:**  $\frac{9}{16}$ " (14mm)
- **Hole Spacing (From End):**  $\frac{13}{16}$ " (21mm)
- **Hole Spacing (On-Center):**  $1\frac{7}{8}$ " (48mm)
- **Width:**  $1\frac{5}{8}$ " (41mm)
- **Thickness:**
  - $\frac{1}{4}$ " (6.4mm) with steel meeting or exceeding ASTM A1011 SS GR 33, or
  - 0.220" (5.6mm) with steel meeting or exceeding ASTM A1011 HSLAS GR 45

### Note:

- When used for mechanical supports, load capacities of brackets and fittings should be in compliance with the American Standard Code for Pressure Piping.

### Materials & Finishes - Standard:

- **Base Metal:** Steel conforms to ASTM A1011 SS GR 33, A1011 HSLAS GR 45, A36, A575, A576, or A635.
- **Electrogalvanized (EG):** Conforms to ASTM B633, Type III SC1
- **Unistrut Defender (DF):** Conforms to ASTM A1059
- **Hot Dip Galvanized (HG):** Conforms to ASTM A123 or A153
- **Perma-Green (GR):** Conforms to commercial standards for powder coating
- **Perma-Gold (ZD):** Conforms to ASTM B633, Type II SC1 or SC3
- **Plain (PL):** No finish

### Materials & Finishes - Special Metals:

- **Stainless Steel, Type 304 (SS):** Conforms to ASTM A240 or A276, Type 304 \*
- **Stainless Steel, Type 316 (ST):** Conforms to ASTM A240 or A276, Type 316 \*
- **Aluminum (AL):** Conforms to ASTM B209, Type 1100F or 5052-H32 \*

\* These materials have different physical properties and performance characteristics. Please contact us for design support.



Catalog Number	Material Type	Surface Finish	Part Weight (lb/ea)	Standard Package Weight (lb)
P2786 DF	Steel	Defender	0.98	24.5
P2786 EG	Steel	Electrogalvanized	0.92	23
P2786 HG	Steel	Hot-Dip Galvanized	0.98	24.5
P2786 PL	Steel	Plain/Oil	0.92	23
P2786 SS	Stainless Steel - 304		0.92	23
P2786 ZD	Steel	Zinc Dichromate	0.92	23

**Design Load:** 1,000 lbs (4.45 kN) each  
**Notes:**

- 1. Design loads only apply to Unistrut brand products. Look for "UNISTRUT" on the part.
- 2. Use in pairs only.
- 3. Safety factor = 2.5 based on ultimate strength of connection.
- 4. For use with beam flanges up to 3/4" (19.1 mm) thick.
- 5. Use with Channels P1001, P1101, P2001, P3001, P5000, and P5500.