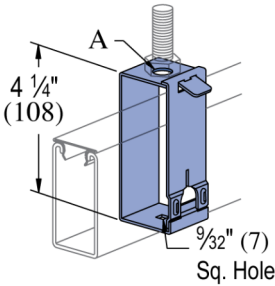
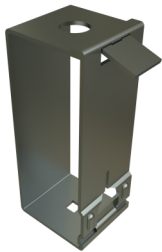


P2755 thru P2757 - Raceway  
Hangers (1-5/8" Series)

Features

- UL & CSA listed
- Hanger for P1001, P1101, P5500 and P5000 channels
- Design Load: 120 lbs [0.53 kN]



Catalog Number	Material Type	Surface Finish	Part Weight (lb/ea)	Standard Package Weight (lb)
P2756 EG	Steel	Electrogalvanized	0.43	43
P2757 EG	Steel	Electrogalvanized	0.44	44
P2755 EG	Steel	Electrogalvanized	0.44	44
P2756 GR	Steel	Green E-Coat	0.43	43
P2755 GR	Steel	Green E-Coat	0.44	44
P2757 GR	Steel	Green E-Coat	0.44	44