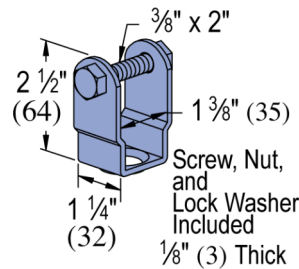
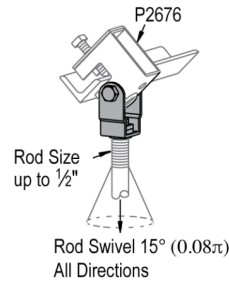
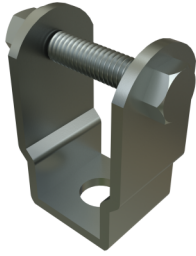


## P2677 - Beam Clamp

Beam Clamp Pivot Hanger P2677 is to be used when attaching Atkore beam clamps to a sloped or angled beam.

### Features

- For sloped or angled beams
- Vertical Design Load: 500 lbs
- Threaded rod sizes up to 1/2"
- This series is available in Electrogalvanized (EG), Hot-Dip Galvanized (HG) and Perma-Green (GR).



### Standard Dimensions (Unless Shown Otherwise on Drawing):

- **Hole Diameter:**  $\frac{9}{16}$ " (14mm)
- **Hole Spacing (From End):**  $\frac{13}{16}$ " (21mm)
- **Hole Spacing (On-Center):**  $1\frac{7}{8}$ " (48mm)
- **Width:**  $1\frac{5}{8}$ " (41mm)
- **Thickness:**

- $\frac{1}{4}$ " (6.4mm) with steel meeting or exceeding ASTM A1011 SS GR 33, or
- 0.220" (5.6mm) with steel meeting or exceeding ASTM A1011 HSLAS GR 45

### Note:

- When used for mechanical supports, load capacities of brackets and fittings should be in compliance with the American Standard Code for Pressure Piping.

### Materials & Finishes - Standard:

- **Base Metal:** Steel conforms to ASTM A1011 SS GR 33, A1011 HSLAS GR 45, A36, A575, A576, or A635.
- **Electrogalvanized (EG):** Conforms to ASTM B633, Type III SC1
- **Unistrut Defender (DF):** Conforms to ASTM A1059
- **Hot Dip Galvanized (HG):** Conforms to ASTM A123 or A153
- **Perma-Green (GR):** Conforms to commercial standards for powder coating
- **Perma-Gold (ZD):** Conforms to ASTM B633, Type II SC1 or SC3
- **Plain (PL):** No finish

### Materials & Finishes - Special Metals:

- **Stainless Steel, Type 304 (SS):** Conforms to ASTM A240 or A276, Type 304 \*
- **Stainless Steel, Type 316 (ST):** Conforms to ASTM A240 or A276, Type 316 \*
- **Aluminum (AL):** Conforms to ASTM B209, Type 1100F or 5052-H32 \*

\* These materials have different physical properties and performance characteristics. Please contact us for design support.



Catalog Number	Material Type	Surface Finish	Part Weight (lb/ea)	Standard Package Weight (lb)
P2677 DF	Steel	Defender	0.3	7.5
P2677 EG	Steel	Electrogalvanized	0.3	7.5
P2677 GR	Steel	Green E-Coat	0.3	7.5
P2677 HG	Steel	Hot-Dip Galvanized	0.3	7.5

**Design Load** = 500 lbs (2.22 kN)  
**Notes:**

- 1. Design loads only apply to Unistrut brand products. Look for "UNISTRUT" on the part.
- 2. Use with P2676 or P2682 beam clamps.
- 3. Use with P2679-4, -6 & -8 swivel nuts, as required.
- 4. Safety factor = 2.5 based on ultimate strength of connection.
- 5. Rod sizes up to 1/2".