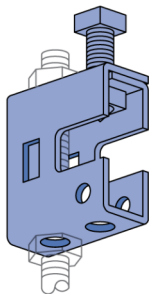
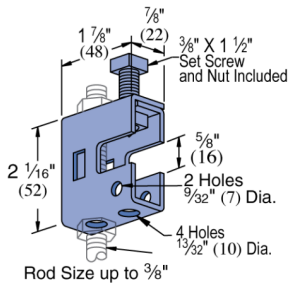
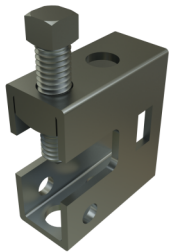


P2675 - Beam Clamp

Beam Clamp P2675 is designed to hang threaded rod from a beam.

Features

- Vertical Design Load: 150 or 250 lbs per table
- Threaded rod sizes up to 3/8"
- Set screw included
- This series is available in Electrogalvanized (EG) and Hot-Dip Galvanized (HG)



Catalog Number	Material Type	Surface Finish	Part Weight (lb/ea)	Standard Package Weight (lb)
P2675 EG	Steel	Electrogalvanized	0.33	8.25
P2675 GR	Steel	Green E-Coat	0.33	8.25
P2675 HG	Steel	Hot-Dip Galvanized	0.35	8.75