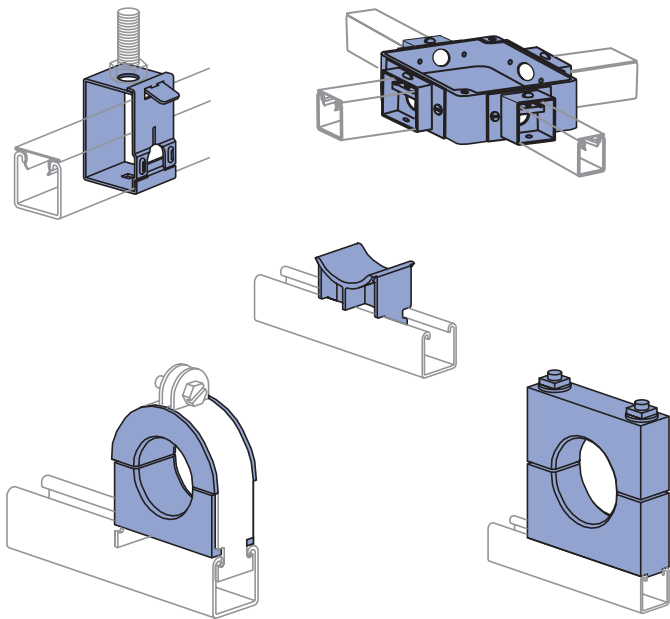


# ELECTRICAL FITTINGS



Electrical Fittings.....	128 - 130
Receptacles.....	131
Fixture Hangers.....	131
Accessories and Connectors.....	132
Junction Boxes.....	132
In-Channel Joiners.....	133
Swivel Hangers.....	133
Cable Entrance Tubing and Accessories.....	134 - 136
Electrical Fittings Technical Data.....	137 - 138

## MATERIAL

Unistrut fittings, unless noted, are made from hot-rolled, pickled and oiled steel plates, strip, bar or coil, and conform to one or more of the following specifications:

ASTM A575, A576, A635, A1011 SS GR 33, A1011 HSLAS GR 45 or A36. The fitting steel also meets or exceeds the physical requirements of ASTM A1011 SS GR 33.

Maple cable saddles, cable clamps and bus bar clamps are made from kiln-dry maple treated with paraffin to a depth of 1/16" (1.6mm). Special sizes of clamps can be fabricated upon request. Cable saddles are fiberglass-reinforced polyester.

## CHANNEL RACEWAYS

The Unistrut Metal Framing System includes an exclusive combination of channel, fittings and hardware listed under new UL classification 5B. This classification covers strut-type channel raceways and fittings for use in accordance with Article 384 of the National Electrical Code, NFPA 70.

Included are metal strut-type channel raceways at least .071 inch (1.81mm) thick and metal or non-metal closure strips at least .040 inch (1.02mm) thick.

The Unistrut system requires no welding, drilling or other complex fabrication techniques. This means faster, easier solutions for virtually any electrical support problem.

Unistrut channel offers structural and spanning capabilities not available with conventional surface raceway products and is available in continuous lengths of up to 20 feet. Just as important, it is part of an integrated system that can be used for raceways, trapeze hangers, cable-tray supports, lighting grids, fluorescent-fixture supports and countless other electrical applications.

## CHANNEL COMPATABILITY

All of the electrical components in this section are intended for use with any of the 1 5/8" wide channel. They are not intended for use with 1 1/4" or 1 3/16" framing systems.

## FINISHES

Components listed in this section are available in:

Electro-galvanized (EG), conforming to ASTM B633 Type III SC1;

Hot-dipped galvanized (HG), conforming to ASTM A123 or A153,

Green Powder Coat (GR), conforming to commercial standards for Powder Coating

Plain (PL)

Note: Many Unistrut Metal Framing components, when used with appropriate closures, are UL® listed, and CSA approved.

## DESIGN LOAD

Design load data, where shown, is based on the ultimate strength of the connection with a safety factor of 2.5, unless otherwise noted.

## DIMENSIONS

Imperial dimensions are illustrated in inches. Metric dimensions are shown in parenthesis or as noted. Unless noted, all metric dimensions are in millimeters and rounded to one decimal place.

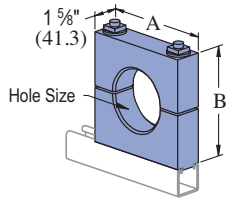
## LISTINGS

UL File No. - E19459	Channel & Closure Strips
UL File No. - E25629	Fittings
CSA File No. - 013669	All Products

**Electrical Fittings**

**P2645A THRU P2645H**

**MAPLE CABLE CLAMPS**



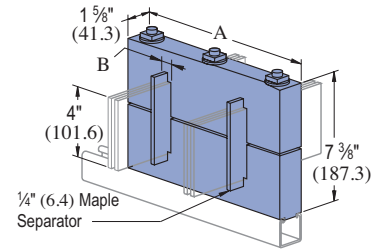
- 3/8" studs, square nuts and washers included.
  - Specify hole size when ordering.
  - Order channel nuts as required.
- Material: Paraffin impregnated maple hardwood.

Part No.	Hole Size In (mm)	"A" & "B" Dimensions In (mm)	Wt/100 pcs Lbs (kg)
P2645A	0 - 1	3 1/2	84
	0 - 25.4	88.9	38.1
P2645B	1 - 1 1/2	4	102
	25.4 x 38.1	101.6	46.3
P2645C	1 1/2 - 2	4 1/2	121
	38.1 - 50.8	114.3	54.9
P2645D	2 - 2 1/2	5 1/2	165
	50.8 x 63.5	139.7	74.8
P2645E	2 1/2 - 3	6	189
	63.5 - 76.2	152.4	85.7
P2645F	3 - 3 1/2	6 1/2	215
	76.2 x 88.9	165.1	97.5
P2645G	3 1/2 - 4	7	243
	88.9 - 101.6	177.8	110.2
P2645H	over 4	-	-
	over 101.6	-	-

**P2647A THRU P2647F**

**4" (101.6) BUS BAR MAPLE CLAMPS**

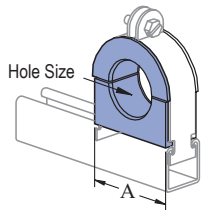
- 1/2" studs, square nuts and washers are included.
  - Channel nuts must be ordered separately.
  - Bus bar maple clamps also available in 1/4" (6.4) x 2" (50.8) and 1/4" (6.4) x 6" (152.4).
- Material: Paraffin impregnated maple hardwood.



Part No.	"A" In (mm)	"B" In (mm)	No. Bus Separators	No. Bars Per Leg	Wt/100 pcs Lbs (kg)
P2647A	8 1/2	9/32	0	1	421
	215.9	7.1			191.0
P2647B	9 1/2	13/16	2	2	465
	241.3	20.6			210.9
P2647C	10 1/2	15/16	4	3	509
	266.7	33.3			230.9
P2647D	11 1/2	1 13/16	6	4	553
	292.1	46.0			250.8
P2647E	12 1/2	2 3/8	8	5	597
	317.5	60.3			270.8
P2647F	13 1/2	2 1/2	10	6	631
	342.9	73.0			286.2

**P1690 THRU P1697**

**MAPLE CABLE CLAMPS**

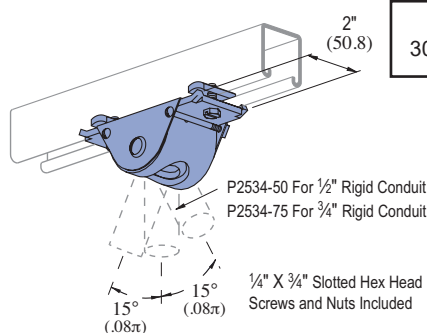


- Use with steel clamp and Everdur hardware. Order clamp separately.
  - Specify hole size when ordering.
- Material: Paraffin impregnated maple hardwood.

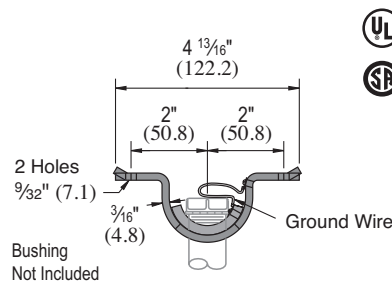
Part No.	Steel Clamp No.	Hole Size In (mm)	"A" In (mm)	Wt/100 pcs Lbs (kg)
P1690	P1113 E	0 - 5/8	1 5/16	24
		0 - 15.9	33.3	10.9
P1691	P1115 E	1/2 - 1	1 5/16	42
		12.7 - 25.4	49.2	19.1
P1692	P1117 E	3/4 - 1 1/2	2 3/8	54
		19.1 x 38.1	60.3	24.5
P1693	P1118 E	1 1/4 - 1 3/4	2 3/8	65
		31.8 x 44.5	73.0	29.5
P1694	P1119 E	1 1/2 - 2 1/4	3 1/2	84
		38.1 x 57.2	88.9	38.1
P1695	P1120 E	2 - 2 1/2	4	107
		50.8 x 63.5	101.6	48.5
P1696	P1121 E	2 1/4 - 3	4 1/2	123
		57.2 - 76.2	114.3	55.8
P1697	P1123 E	3 - 4	5 9/16	163
		76.2 - 101.6	141.3	73.9

**P2534-50, P2534-75**

**CONDUIT SWING FITTING**



Design Load  
300 Lbs (1.33 kN)



- Conduit hanger fittings allow a free swivel of 15° in one direction.
- Fitting may be mounted to the slot side of the Unistrut channel or to the back.

Wt/100 pcs: 96 Lbs (43.5 kg)