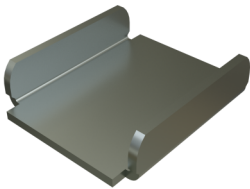


P2407 thru P3380 - End Cap
(1-5/8" Series)

End Cap is designed to press into Atkore's 1-5/8" wide strut channel. This product can be used to cover sharp or unprotected cut ends, or to cover the end of the channel for any other purpose.

Features

- Use with P1000, P3000 and P3300 (per table)
- Material: 0.075" (1.5)
- This product is available in electrogalvanized (EG)



Catalog Number	Material Type	Surface Finish	Part Weight (lb/ea)	Standard Package Weight (lb)
P2407 EG	Steel	Electrogalvanized	0.1	10
P3280W EG	Steel	Electrogalvanized	0.08	8
P3380 EG	Steel	Electrogalvanized	0.05	25
P3280 EG	Steel	Electrogalvanized	0.06	22
P3280 HG	Steel	Hot-Dip Galvanized	0.09	36
P3380 PL	Steel	Plain/Oil	0.05	25
P3280 SS	Stainless Steel - 304		0.06	22
P3380 SS	Stainless Steel - 304		0.05	25