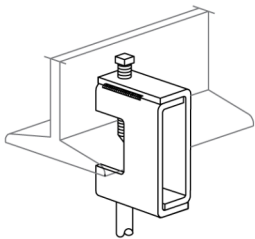
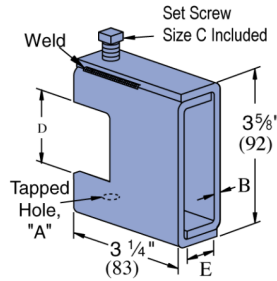
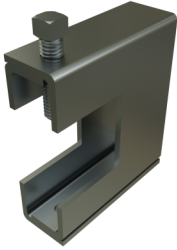


## P2398S thru P2405S - Beam Clamp (1-5/8" Series)

Beam Clamp P2398S thru P2405S series beam clamp is designed to hang threaded rod from a beam.

### Features

- Vertical Design Load: Up to 2,400 lbs per table.
- 1/4" - 5/8" threaded hole size
- Beam flange thickness: Up to 7/8"
- Set screw included
- This series is available in Electrogalvanized (EG), Hot-Dip Galvanized (HG) and Perma-Green (GR).



### Standard Dimensions (Unless Shown Otherwise on Drawing):

- **Hole Diameter:**  $\frac{9}{16}$ " (14mm)
- **Hole Spacing (From End):**  $\frac{13}{16}$ " (21mm)
- **Hole Spacing (On-Center):**  $1\frac{7}{8}$ " (48mm)
- **Width:**  $1\frac{5}{8}$ " (41mm)
- **Thickness:**
  - $\frac{1}{4}$ " (6.4mm) with steel meeting or exceeding ASTM A1011 SS GR 33, or
  - 0.220" (5.6mm) with steel meeting or exceeding ASTM A1011 HSLAS GR 45

### Note:

- When used for mechanical supports, load capacities of brackets and fittings should be in compliance with the American Standard Code for Pressure Piping.

### Materials & Finishes - Standard:

- **Base Metal:** Steel conforms to ASTM A1011 SS GR 33, A1011 HSLAS GR 45, A36, A575, A576, or A635.
- **Electrogalvanized (EG):** Conforms to ASTM B633, Type III SC1
- **Unistrut Defender (DF):** Conforms to ASTM A1059
- **Hot Dip Galvanized (HG):** Conforms to ASTM A123 or A153
- **Perma-Green (GR):** Conforms to commercial standards for powder coating
- **Perma-Gold (ZD):** Conforms to ASTM B633, Type II SC1 or SC3
- **Plain (PL):** No finish

### Materials & Finishes - Special Metals:

- **Stainless Steel, Type 304 (SS):** Conforms to ASTM A240 or A276, Type 304 \*
- **Stainless Steel, Type 316 (ST):** Conforms to ASTM A240 or A276, Type 316 \*
- **Aluminum (AL):** Conforms to ASTM B209, Type 1100F or 5052-H32 \*

\* These materials have different physical properties and performance characteristics. Please contact us for design support.



Catalog Number	Material Type	Surface Finish	Part Weight (lb/ea)	Standard Package Weight (lb)
P2401S EG	Steel	Electrogalvanized	1.56	15.6
P2398S EG	Steel	Electrogalvanized	1.09	10.9
P2405S EG	Steel	Electrogalvanized	2.01	20.1
P2403S EG	Steel	Electrogalvanized	2.01	20.1
P2401S GR	Steel	Green E-Coat	1.56	15.6
P2403S GR	Steel	Green E-Coat	2.01	20.1
P2398S GR	Steel	Green E-Coat	1.09	10.9
P2403S HG	Steel	Hot-Dip Galvanized	2.13	21.3
P2398S HG	Steel	Hot-Dip Galvanized	1.09	10.9
P2405S HG	Steel	Hot-Dip Galvanized	2.01	20.1
P2401S HG	Steel	Hot-Dip Galvanized	1.65	16.5
P2403S SS	Stainless Steel - 304		2.01	20.1
P2405S SS	Stainless Steel - 304		2.01	20.1

Design Loads - P2398S thru P2405S	
Part Number	Design Load lbs (kN)
P2398S	800 (3.56)
P2401S	1,300 (5.78)
P2403S	1,900 (8.45)
P2405S	2,400 (10.68)

## Notes:

1. Design loads only apply to Unistrut brand products. Look for "UNISTRUT" on the part.
2. Safety factor = 2.5 based on ultimate strength of connection.
3. For beam flanges between 3/4" (19.1 mm) to 1-5/8" (41.3 mm) thick.
4. Set Screw Installation Torque:

P2398S: 60 in-lbs (7 N-m) P2401S, P2403S: 125 in-lbs (14 N-m) P2405S: 250 in-lbs (28 N-m)