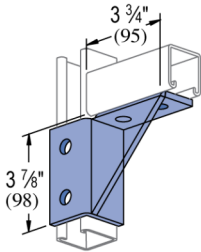
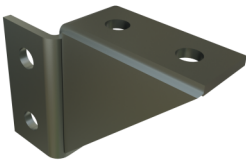


P2344R & L - Wing Shape Fitting

Unistrut Wing Shape Fitting serves as weldless connectors between pieces of Atkore channel and allow for attachment of Atkore channel to surfaces such as walls.

Features

- Steel: ASTM A1011 SS GR 33
- Holes for 1/2" fasteners
- Variety of material and finish options



Catalog Number	Material Type	Surface Finish	Part Weight (lb/ea)	Standard Package Weight (lb)
P2344L DF	Steel	Defender	1.87	18.7
P2344R DF	Steel	Defender	1.87	18.7
P2344L EG	Steel	Electrogalvanized	1.76	17.6
P2344R EG	Steel	Electrogalvanized	1.76	17.6
P2344L GR	Steel	Green E-Coat	1.76	17.6
P2344R GR	Steel	Green E-Coat	1.76	17.6
P2344R HG	Steel	Hot-Dip Galvanized	1.87	18.7
P2344L HG	Steel	Hot-Dip Galvanized	1.87	18.7
P2344L PL	Steel	Plain/Oil	1.76	17.6
P2344R PL	Steel	Plain/Oil	1.76	17.6
P2344L SS	Stainless Steel - 304		1.76	17.6
P2344R SS	Stainless Steel - 304		1.76	17.6
P2344R ZD	Steel	Zinc Dichromate	1.76	17.6
P2344L ZD	Steel	Zinc Dichromate	1.76	17.6