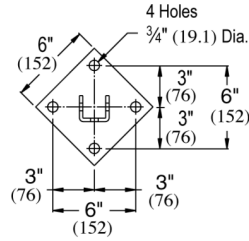
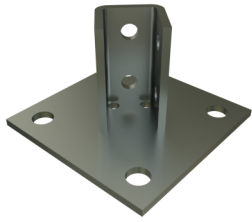


P2072A & P2072A SQ - Post Base (1-5/8" Series)

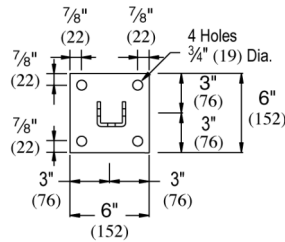
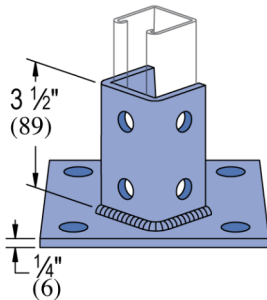
Atkore Post Base is designed to securely fasten Atkore channel and Telestrut system to a solid surface including concrete.

Features

- Post base to anchor strut channel to floors (most common), walls or ceilings
- (4) 3/4" mounting holes for 5/8" anchors
- 6" x 6" base, 2-hole strut mount
- Square or 45° orientation



P2072A



P2072A SQ



Catalog Number	Material Type	Surface Finish	Part Weight (lb/ea)	Standard Package Weight (lb)
P2072ASQ DF	Steel	Defender	3.73	37.3
P2072A DF	Steel	Defender	4.07	40.7
P2072ASQ AL	Aluminum		1.2	12
P2072A AL	Aluminum		1.35	13.5
P2072A EG	Steel	Electrogalvanized	3.73	37.3
P2072ASQ EG	Steel	Electrogalvanized	3.73	37.3
P2072ASQ GR	Steel	Green E-Coat	3.7	37
P2072A GR	Steel	Green E-Coat	3.73	37.3
P2072ASQ HG	Steel	Hot-Dip Galvanized	3.95	39.5
P2072A HG	Steel	Hot-Dip Galvanized	4.07	40.7
P2072A PL	Steel	Plain/Oil	3.73	37.3
P2072A SS	Stainless Steel - 304		3.73	37.3
P2072ASQ SS	Stainless Steel - 304		3.73	37.3
P2072A ST	Stainless Steel - 316		3.73	37.3
P2072ASQ ST	Stainless Steel - 316		3.73	37.3
P2072ASQ ZD	Steel	Zinc Dichromate	3.73	37.3
P2072A ZD	Steel	Zinc Dichromate	3.37	33.7