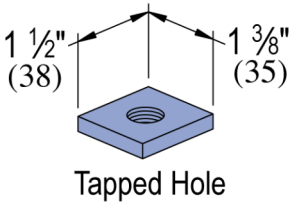
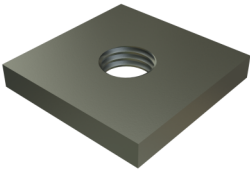


P1959 thru P1961 - 1 Hole Washer, Flat Plate Fitting (1-5/8" Series)



Atkore’s flat plate fittings provide a simple, sturdy solution for joining metal framing components. Their flat design enables a variety of connection methods and configurations, offering flexible and dependable performance across many support structures.

Features

- 3/8" - 5/8" threaded hole sizes available
- ASTM A1011 SS Grade 33
- Electrogalvanized for corrosion protection



Catalog Number	Trade Size	Material Type	Surface Finish	Part Weight (lb/ea)	Standard Package Weight (lb)
P1959 EG	3/8 ¹⁶	Steel	Electrogalvanized	0.21	10.5
P1960 EG	1/2 ¹³	Steel	Electrogalvanized	0.21	10.5
P1960 HG	1/2 ¹³	Steel	Hot-Dip Galvanized	0.21	10.5
P1960 PL	1/2 ¹³	Steel	Plain/Oil	0.21	10.5
P1960 ST	1/2 ¹³	Stainless Steel - 316		0.21	10.5
P1960 ZD	1/2 ¹³	Steel	Zinc Dichromate	0.21	10.5
P1961 EG	5/8 ¹¹	Steel	Electrogalvanized	0.19	9.5
P1961 SS	5/8 ¹¹	Stainless Steel - 304		0.19	9.5