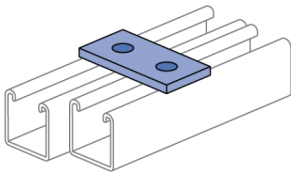
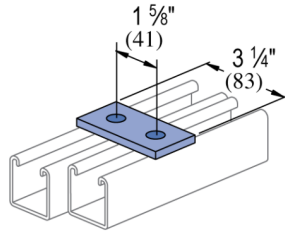
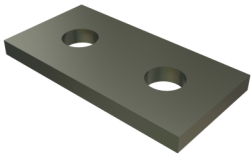


## P1924 - 2 Hole, Flat Plate Fitting

Atkore's flat plate fittings provide a simple, sturdy solution for joining metal framing components. Their flat design enables a variety of connection methods and configurations, offering flexible and dependable performance across many support structures.

### Features

- Steel: ASTM A1011 SS GR 33
- Holes for 1/2" fasteners
- Variety of material and finish options



### Standard Dimensions (Unless Shown Otherwise on Drawing):

- **Hole Diameter:**  $\frac{9}{16}$ " (14mm)
- **Hole Spacing (From End):**  $\frac{13}{16}$ " (21mm)
- **Hole Spacing (On-Center):**  $1\frac{7}{8}$ " (48mm)
- **Width:**  $1\frac{5}{8}$ " (41mm)
- **Thickness:**
  - $\frac{1}{4}$ " (6.4mm) with steel meeting or exceeding ASTM A1011 SS GR 33, or
  - 0.220" (5.6mm) with steel meeting or exceeding ASTM A1011 HSLAS GR 45

### Note:

- When used for mechanical supports, load capacities of brackets and fittings should be in compliance with the American Standard Code for Pressure Piping.

### Materials & Finishes - Standard:

- **Base Metal:** Steel conforms to ASTM A1011 SS GR 33, A1011 HSLAS GR 45, A36, A575, A576, or A635.
- **Electrogalvanized (EG):** Conforms to ASTM B633, Type III SC1
- **Unistrut Defender (DF):** Conforms to ASTM A1059
- **Hot Dip Galvanized (HG):** Conforms to ASTM A123 or A153
- **Perma-Green (GR):** Conforms to commercial standards for powder coating
- **Perma-Gold (ZD):** Conforms to ASTM B633, Type II SC1 or SC3
- **Plain (PL):** No finish

### Materials & Finishes - Special Metals:

- **Stainless Steel, Type 304 (SS):** Conforms to ASTM A240 or A276, Type 304 \*
- **Stainless Steel, Type 316 (ST):** Conforms to ASTM A240 or A276, Type 316 \*
- **Aluminum (AL):** Conforms to ASTM B209, Type 1100F or 5052-H32 \*

\* These materials have different physical properties and performance characteristics. Please contact us for design support.



| Catalog Number | Material Type         | Surface Finish     | Part Weight (lb/ea) | Standard Package Weight (lb) |
|----------------|-----------------------|--------------------|---------------------|------------------------------|
| P1924 AL       | Aluminum              |                    | 0.13                | 6.5                          |
| P1924 EG       | Steel                 | Electrogalvanized  | 0.35                | 17.5                         |
| P1924 GR       | Steel                 | Green E-Coat       | 0.35                | 17.5                         |
| P1924 HG       | Steel                 | Hot-Dip Galvanized | 0.37                | 18.5                         |
| P1924 PL       | Steel                 | Plain/Oil          | 0.35                | 17.5                         |
| P1924 SS       | Stainless Steel - 304 |                    | 0.35                | 17.5                         |
| P1924 ZD       | Steel                 | Zinc Dichromate    | 0.35                | 17.5                         |