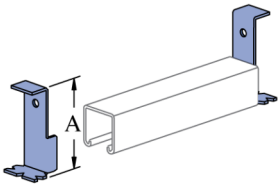
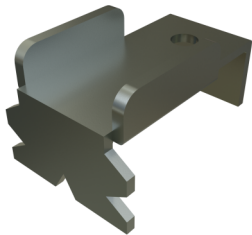


P1703 thru P4703 - Concrete  
Insert End Caps

End Cap Anchors for Concrete Inserts are intended for use with Atkore's concrete inserts, acting as a closure strip at the end of the channel to prevent seepage from concrete. These also provide an additional embedded anchor at the end of the channel insert.

Features

- Use with Atkore's concrete insert series
- Embedded anchor at the end of the channel insert
- Pregalvanized for corrosion protection



| Catalog Number | Gauge | Material Type | Surface Finish     | Part Weight (lb/ea) | Standard Package Weight (lb) |
|----------------|-------|---------------|--------------------|---------------------|------------------------------|
| P3703 EG       | 13    | Steel         | Electrogalvanized  | 0.18                | 18                           |
| P3704 EG       |       | Steel         | Electrogalvanized  | 0.14                | 14                           |
| P3704 HG       |       | Steel         | Hot-Dip Galvanized | 0.14                | 14                           |
| P1704 PG       |       | Steel         | Pre-Galvanized     | 0.37                | 37                           |
| P1703 PG       |       | Steel         | Pre-Galvanized     | 0.3                 | 30                           |