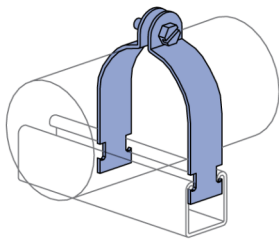
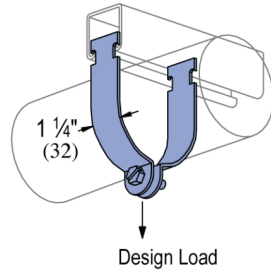
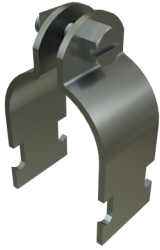


P1425 thru P1431 - Conduit (EMT) Clamp (1-5/8" Series)

EMT Conduit Clamps P1400 series pipe clamps are designed for use with EMT conduit. These clamps are commonly used for trapeze supports, seismic bracing, wall supports, vertical runs, attachment to poles, and general framing needs. For application examples, refer to our Application Showcase.

Features

- This series is also OPM pre-approved for seismic bracing with load testing in three directions.
- Easy installation
- Available assembled or unassembled
- Our P1400 series is available in ElectroGalvanized (EG), Atkore Defender (DF), Hot-Dip Galvanized (HG), Zinc Dichromate (ZD), Stainless Steel (SS).
- Made in the USA



| Catalog Number | Trade Size | Material Type | Surface Finish | Part Weight (lb/ea) | Standard Package Weight (lb) |
|----------------|------------|-----------------------|--------------------|---------------------|------------------------------|
| P1425 EG | 3/8 | Steel | ElectroGalvanized | 0.09 | 9 |
| P1425AS EG | 3/8 | Steel | ElectroGalvanized | 0.09 | 9 |
| P1425 SS | 3/8 | Stainless Steel - 304 | | 0.09 | 9 |
| P1426 DF | 1/2 | Steel | Defender | 0.12 | 12 |
| P1426 AL | 1/2 | Aluminum | | 0.04 | 4 |
| P1426AS EG | 1/2 | Steel | ElectroGalvanized | 0.11 | 11 |
| P1426 EG | 1/2 | Steel | ElectroGalvanized | 0.11 | 11 |
| P1426 HG | 1/2 | Steel | Hot-Dip Galvanized | 0.12 | 12 |
| P1426 SS | 1/2 | Stainless Steel - 304 | | 0.11 | 11 |
| P1426AS ZD | 1/2 | Steel | Zinc Dichromate | 0.11 | 11 |
| P1426 ZD | 1/2 | Steel | Zinc Dichromate | 0.11 | 11 |
| P1427 DF | 3/4 | Steel | Defender | 0.12 | 12 |
| P1427 AL | 3/4 | Aluminum | | 0.04 | 4 |
| P1427 EG | 3/4 | Steel | ElectroGalvanized | 0.12 | 12 |
| P1427AS EG | 3/4 | Steel | ElectroGalvanized | 0.12 | 12 |
| P1427 HG | 3/4 | Steel | Hot-Dip Galvanized | 0.13 | 13 |
| P1427 SS | 3/4 | Stainless Steel - 304 | | 0.12 | 12 |
| P1427 ST | 3/4 | Stainless Steel - 316 | | 0.12 | 12 |
| P1427AS ZD | 3/4 | Steel | Zinc Dichromate | 0.12 | 12 |
| P1427 ZD | 3/4 | Steel | Zinc Dichromate | 0.12 | 12 |
| P1428 DF | 1 | Steel | Defender | 0.16 | 16 |



| Catalog Number | Trade Size | Material Type | Surface Finish | Part Weight (lb/ea) | Standard Package Weight (lb) |
|----------------|------------|-----------------------|--------------------|---------------------|------------------------------|
| P1428 AL | 1 | Aluminum | | 0.05 | 5 |
| P1428AS EG | 1 | Steel | Electrogalvanized | 0.15 | 15 |
| P1428 EG | 1 | Steel | Electrogalvanized | 0.15 | 15 |
| P1428 HG | 1 | Steel | Hot-Dip Galvanized | 0.16 | 16 |
| P1428 SS | 1 | Stainless Steel - 304 | | 0.15 | 15 |
| P1428 ST | 1 | Stainless Steel - 316 | | 0.15 | 15 |
| P1428 ZD | 1 | Steel | Zinc Dichromate | 0.15 | 15 |
| P1428AS ZD | 1 | Steel | Zinc Dichromate | 0.15 | 15 |
| P1429 DF | 1¼ | Steel | Defender | 0.19 | 19 |
| P1429 AL | 1¼ | Aluminum | | 0.06 | 6 |
| P1429AS EG | 1¼ | Steel | Electrogalvanized | 0.18 | 18 |
| P1429 EG | 1¼ | Steel | Electrogalvanized | 0.18 | 18 |
| P1429 HG | 1¼ | Steel | Hot-Dip Galvanized | 0.19 | 19 |
| P1429 SS | 1¼ | Stainless Steel - 304 | | 0.18 | 18 |
| P1429 ST | 1¼ | Stainless Steel - 316 | | 0.18 | 18 |
| P1429 ZD | 1¼ | Steel | Zinc Dichromate | 0.7 | 70 |
| P1429AS ZD | 1¼ | Steel | Zinc Dichromate | 0.18 | 18 |
| P1430 DF | 1½ | Steel | Defender | 0.29 | 29 |
| P1430 EG | 1½ | Steel | Electrogalvanized | 0.29 | 29 |
| P1430AS EG | 1½ | Steel | Electrogalvanized | 0.29 | 14.5 |
| P1430 HG | 1½ | Steel | Hot-Dip Galvanized | 0.29 | 14.5 |
| P1430 SS | 1½ | Stainless Steel - 304 | | 0.29 | 14.5 |
| P1430 ST | 1½ | Stainless Steel - 316 | | 0.29 | 14.5 |
| P1430 ZD | 1½ | Steel | Zinc Dichromate | 0.71 | 35.5 |
| P1430AS ZD | 1½ | Steel | Zinc Dichromate | 0.29 | 14.5 |
| P1431 DF | 2 | Steel | Defender | 0.35 | 35 |
| P1431 EG | 2 | Steel | Electrogalvanized | 0.33 | 33 |
| P1431AS EG | 2 | Steel | Electrogalvanized | 0.33 | 16.5 |
| P1431 HG | 2 | Steel | Hot-Dip Galvanized | 0.35 | 35 |
| P1431 SS | 2 | Stainless Steel - 304 | | 0.33 | 33 |
| P1431 ST | 2 | Stainless Steel - 316 | | 0.33 | 33 |
| P1431 ZD | 2 | Steel | Zinc Dichromate | 0.33 | 33 |
| P1431AS ZD | 2 | Steel | Zinc Dichromate | 0.33 | 16.5 |