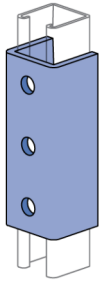
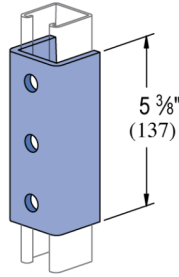
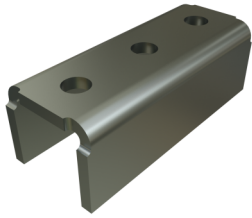


## P1376A - 3 Hole, "U" Shape Fitting

Atkore's U-shape fittings offer strong, stable support for parallel channel connections and perpendicular bracing. With a wide range of configurations and hole patterns, they provide reliable alignment and flexibility—no matter the application—while integrating seamlessly with Atkore and Power-Strut systems.

### Features

- Steel: ASTM A1011 SS GR 33
- Splice strut channel end-to-end
- High capacity for heavy load requirements



### Standard Dimensions (Unless Shown Otherwise on Drawing):

- **Hole Diameter:**  $\frac{9}{16}$ " (14mm)
- **Hole Spacing (From End):**  $\frac{13}{16}$ " (21mm)
- **Hole Spacing (On-Center):**  $1\frac{7}{8}$ " (48mm)
- **Width:**  $1\frac{5}{8}$ " (41mm)
- **Thickness:**
  - $\frac{1}{4}$ " (6.4mm) with steel meeting or exceeding ASTM A1011 SS GR 33, or
  - 0.220" (5.6mm) with steel meeting or exceeding ASTM A1011 HSLAS GR 45

### Note:

- When used for mechanical supports, load capacities of brackets and fittings should be in compliance with the American Standard Code for Pressure Piping.

### Materials & Finishes - Standard:

- **Base Metal:** Steel conforms to ASTM A1011 SS GR 33, A1011 HSLAS GR 45, A36, A575, A576, or A635.
- **Electrogalvanized (EG):** Conforms to ASTM B633, Type III SC1
- **Unistrut Defender (DF):** Conforms to ASTM A1059
- **Hot Dip Galvanized (HG):** Conforms to ASTM A123 or A153
- **Perma-Green (GR):** Conforms to commercial standards for powder coating
- **Perma-Gold (ZD):** Conforms to ASTM B633, Type II SC1 or SC3
- **Plain (PL):** No finish

### Materials & Finishes - Special Metals:

- **Stainless Steel, Type 304 (SS):** Conforms to ASTM A240 or A276, Type 304 \*
- **Stainless Steel, Type 316 (ST):** Conforms to ASTM A240 or A276, Type 316 \*
- **Aluminum (AL):** Conforms to ASTM B209, Type 1100F or 5052-H32 \*

\* These materials have different physical properties and performance characteristics. Please contact us for design support.



Catalog Number	Material Type	Surface Finish	Part Weight (lb/ea)	Standard Package Weight (lb)
P1376A EG	Steel	Electrogalvanized	1.97	39.4
P1376A GR	Steel	Green E-Coat	1.97	39.4
P1376A HG	Steel	Hot-Dip Galvanized	2.03	40.6
P1376A PL	Steel	Plain/Oil	1.97	39.4