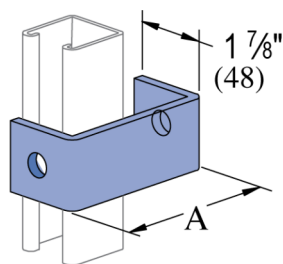
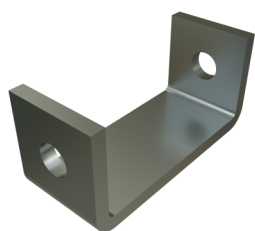


P1363A thru P1363E - 2 Hole, "U" Shape Fitting (1-5/8" Series)

Atkore's U-shape fittings offer strong, stable support for parallel channel connections and perpendicular bracing. With a wide range of configurations and hole patterns, they provide reliable alignment and flexibility—no matter the application—while integrating seamlessly with Atkore and Power-Strut systems.



Features

- Steel: ASTM A1011 SS GR 33
- Holes for 1/2" fasteners
- Variety of material and finish options



Catalog Number	Material Type	Surface Finish	Part Weight (lb/ea)	Standard Package Weight (lb)
P1363B EG	Steel	Electrogalvanized	0.89	22.25
P1363C EG	Steel	Electrogalvanized	1.01	25.25
P1363E EG	Steel	Electrogalvanized	1.24	24.8
P1363A EG	Steel	Electrogalvanized	0.78	19.5
P1363B GR	Steel	Green E-Coat	0.89	22.25
P1363E GR	Steel	Green E-Coat	1.24	31
P1363D GR	Steel	Green E-Coat	1.12	28
P1363A GR	Steel	Green E-Coat	0.78	19.5
P1363C GR	Steel	Green E-Coat	1.01	25.25
P1363A HG	Steel	Hot-Dip Galvanized	0.82	20.5
P1363D HG	Steel	Hot-Dip Galvanized	1.18	29.5
P1363C HG	Steel	Hot-Dip Galvanized	1.07	26.75
P1363B HG	Steel	Hot-Dip Galvanized	0.94	23.5
P1363D PL	Steel	Plain/Oil	1.12	28
P1363A SS	Stainless Steel - 304		0.78	19.5
P1363D SS	Stainless Steel - 304		1.12	28
P1363E SS	Stainless Steel - 304		1.24	24.8
P1363C SS	Stainless Steel - 304		1.01	25.25
P1363B SS	Stainless Steel - 304		0.86	21.5