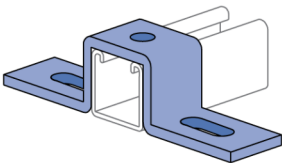
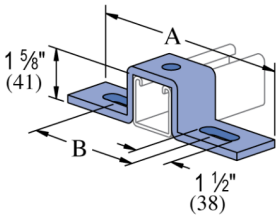
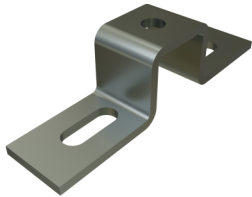


P1048 thru P1050 - 3 Hole "U" Shape Fitting (1-5/8" Series)

Atkore's U-shape fittings offer strong, stable support for parallel channel connections and perpendicular bracing. With a wide range of configurations and hole patterns, they provide reliable alignment and flexibility—no matter the application—while integrating seamlessly with Atkore and Power-Strut systems.

Features

- Steel: ASTM A1011 SS GR 33
- Holes for 1/2" fasteners
- Variety of material and finish options



Catalog Number	Material Type	Surface Finish	Part Weight (lb/ea)	Standard Package Weight (lb)
P1048 DF	Steel	Defender	1.11	11.1
P1050 EG	Steel	Electrogalvanized	1.5	30
P1048 EG	Steel	Electrogalvanized	1.05	10.5
P1049 EG	Steel	Electrogalvanized	1.2	12
P1050 GR	Steel	Green E-Coat	1.3	26
P1048 GR	Steel	Green E-Coat	1.05	10.5
P1049 GR	Steel	Green E-Coat	1.2	12
P1048 HG	Steel	Hot-Dip Galvanized	1.11	11.1
P1049 HG	Steel	Hot-Dip Galvanized	1.27	12.7
P1050 HG	Steel	Hot-Dip Galvanized	1.59	31.8
P1048 SS	Stainless Steel - 304		1.11	11.1