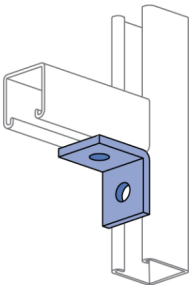
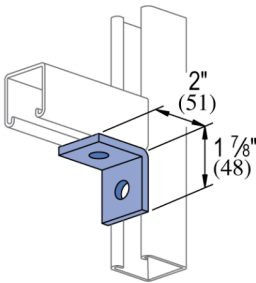
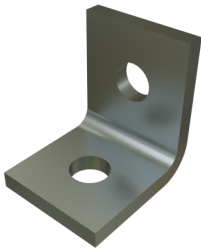


P1026 - 2 Hole, 90° Fitting

Atkore’s 90-degree angle fittings provide strong, reliable support for right-angle connections in metal framing systems. Designed for quick installation, they offer precision alignment and compatibility with a wide range of strut profiles. Available in multiple coating options, these fittings deliver long-lasting performance in both standard and corrosive environments.

Features

- Steel: ASTM A1011 SS GR 33
- Holes for 1/2" fasteners
- Variety of material and finish options



Catalog Number	Material Type	Surface Finish	Part Weight (lb/ea)	Standard Package Weight (lb)
P1026 DF	Steel	Defender	0.41	20.5
P1026 AL	Aluminum		0.12	6
P1026 EG	Steel	Electrogalvanized	0.38	19
P1026 GR	Steel	Green E-Coat	0.38	19
P1026 HG	Steel	Hot-Dip Galvanized	0.41	20.5
P1026 PL	Steel	Plain/Oil	0.38	19
P1026 SS	Stainless Steel - 304		0.38	19
P1026 ST	Stainless Steel - 316		0.38	19
P1026 ZD	Steel	Zinc Dichromate	0.38	19