

# ECONOMY BUNDLE

## Surface Mount Tape Light Channel Bundle

An economical go to for tape light installations, the Economy channel provides ample heat dissipation and diffuses light just enough to provide a great economical option. Use as a surface mount application when additional tape light protection is needed.

- Mounting channel for tape light
- Surface mount channel perfect for remodel applications
- Recommended for use with tape light <4.5W/ft (15W/M)
- Low profile housing design for limited space
- Frosted, UV & flame resistant lens protects light source while evenly diffusing light
- Lightweight anodized aluminum provides excellent heat dissipation
- Field cuttable channel and lens
- Compatible with 10-12mm wide tape light

### Available Finishes

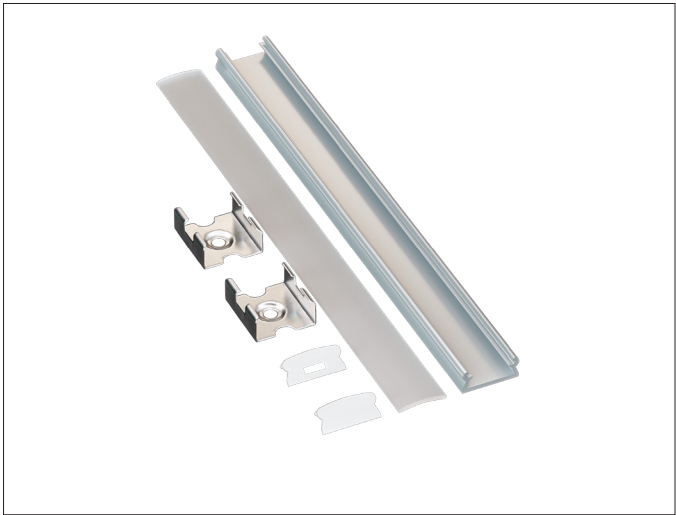


Anodized Aluminum

### Compatible Tape Light

- Static White (10mm) <4.5W/ft
- Tunable CCT (10mm) <4.5W/ft
- RGBW (12mm) <4.5W/ft

PROJECT:
TYPE:
LOCATION:
CATALOG NUMBER:



### ECONOMY BUNDLE ORDERING INFORMATION

ITEM NUMBER	DESCRIPTION
EE1-AAFR-2M-BNDL1	2M Economy Single Unit Bundle Includes: (1) 2M Economy Channel, (1) 2M High Grade Diffusion Lens, (1) End Cap w/ Hole, (1) End Cap w/o Hole, (6) Mounting Clips
EE1-AAFR-2M-BNDL5	2M Economy Five Unit Bundle Includes: (5) 2M Economy Channels, (5) 2M High Grade Diffusion Lenses, (5) End Caps w/ Hole, (5) End Caps w/o Hole, (30) Mounting Clips
EE1-AAFR-2M-BNDLACC-BG5	Accessory Five Pack Includes: (5) End Caps w/ Hole, (5) End Caps w/o Hole, (5) Mounting Clips

### ECONOMY DIMENSIONS

