

Liquid Tight Straight Fitting

Size Range: 3/8" - 4"

Product Series: STR Seal Tight Fitting Reuseable

Material: Solid Alloy Steel Construction AL and SS Options

Zinc Plated with a Chromate Finish **

Made in the USA

Features:

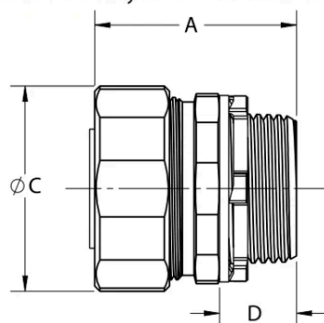
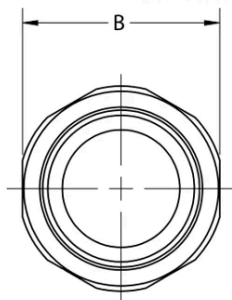
Precision Machined Cut Threads NPT

Furnished with Steel Locknut and Sealing Washer

Extra Long Ferrule Engages Conduit Provides Exceptional Retention & Bend Radius

UL Rated Concrete Tight Suitable for Direct Burial

Twice the Strength and Durability of ALL Die Cast and Malleable Products



Shown with Optional Bushing

Cat # *	Trade Size	A Length	B Hex	C Diameter	D Thread Length	Wt. Per/C
STR38	3/8"	1-3/8"	1-1/16"	1-1/8"	5/8"	12
STR50	1/2"	1-3/16"	1-1/8"	1-3/16"	5/8"	13
STR75	3/4"	1-7/16"	1-3/8"	1-7/16"	5/8"	17
STR100	1"	1-3/4"	1-11/16"	1-3/4"	11/16"	26
STR125	1-1/4"	2-3/16"	2-1/16"	2-3/16"	11/16"	46
STR150	1-1/2"	2-3/8"	2-5/16"	2-3/8"	3/4"	59
STR200	2"	2-7/8"	2-3/4"	2-7/8"	3/4"	84
STR250	2-1/2"	3-7/16"	3-1/4"	3-7/16"	1-1/8"	147
STR300	3"	4"	3-15/16"	4"	1-1/8"	174
STR350	3-1/2"	4-9/16"	4-7/16"	4-9/16"	1-1/8"	219
STR400	4"	5-1/8"	4-15/16"	5-1/8"	1-1/8"	256

** Add suffix "B" for insulated throat

Compliances:

UL 514 B, 467

NEMA Standard FB1

Rated NEMA Types 2, 3, 3R, 3, 4X, 5, 12, 13

NEC: Class I, Division 2

Class II, Divisions 1 and 2

Class III, Divisions 1 and 2

Federal Standard A-A-50553

UL Rated for Wet Locations Guaranteed to Seal Out Liquids,

Contaminants & Ingress of Other Fluids Suitable for Direct Burial

CSA Standard: C22.2 No. 18F

RoHS Compliant

REACH Compliant

CA Prop 65 Compliant

UNSPSC 39123033



Available Options:

** Material Options: ALUMINUM - Copper Free

Add Suffix "AL" to Cat #; Stainless Steel Consult Factory

** Insulated Throat Bushing 105°C UL Rating

Factory Installed Bushing - Add Suffix "B" to Above Cat #

Configurations: 90° and 45°

Transition Fittings - Adapters to Convert

EMT to Liquid Tight, Right Conduit to Liquid Tight

Options of:

Grounding Lugs AL and CU

Wire Mesh Strain Relief

** Galvanized Plating Option Available

STR Series is NOT Rated nor Recommended for Type B Conduit

See our NMLT Series