

Rigid Steel Reducing Bushings - Haz.

Size Range: 1/2" - 4"

Product Series: RBH Reducing Bushings for Hazardous Locations

Material: Solid Alloy Steel Construction

Zinc Plated with Chromate Finish **

Made in the USA

Twice the Strength and Durability of Die Cast & Malleable Products

Features:

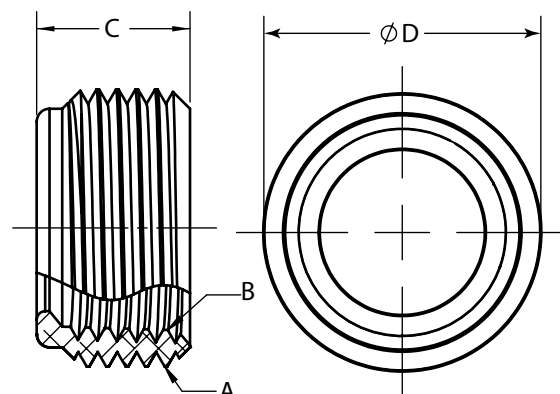
Precision Machined Cut NPT Tapered Threads

Smooth ID for EZ Fast Wire Pull

Industrial SPEC-grade

For Use on Rigid / IMC Conduit

Reduces the Threaded Opening on Conduit Bodies or any Female Threaded Fitting.



Solid Alloy Steel
Hazardous Locations Reducing Bushings



CAT #	TRADE SIZE	A EXTERNAL THREAD	B INTERNAL THREAD	C LENGTH	D DIAMETER	Wt. Per/C
RB7550H	3/4" x 1/2"	3/4"-14 NPT	1/2"-14 NPT	3/4"	1-1/16"	5
RB10050H	1" x 1/2"	1"-11.5 NPT	1/2"-14 NPT	3/4"	1-5/16"	14
RB10075H	1" x 3/4"	1"-11.5 NPT	3/4"-14 NPT	3/4"	1-5/16"	8
RB12550H	1-1/4" x 1/2"	1-1/4"-11.5 NPT	1/2"-14 NPT	7/8"	1-5/8"	34
RB12575H	1-1/4" x 3/4"	1-1/4"-11.5 NPT	3/4"-14 NPT	7/8"	1-5/8"	27
RB125100H	1-1/4" x 1"	1-1/4"-11.5 NPT	1"-11.5 NPT	7/8"	1-5/8"	17
RB15050H	1-1/2" x 1/2"	1-1/2"-11.5 NPT	1/2"-14 NPT	15/16"	1-7/8"	52
RB15075H	1-1/2" x 3/4"	1-1/2"-11.5 NPT	3/4"-14 NPT	15/16"	1-7/8"	46
RB150100H	1-1/2" x 1"	1-1/2"-11.5 NPT	1"-11.5 NPT	15/16"	1-7/8"	35
RB150125H	1-1/2" x 1-1/4"	1-1/2"-11.5 NPT	1-1/4"-11.5 NPT	15/16"	1-7/8"	15
RB20050H	2" x 1/2"	2"-11.5 NPT	1/2"-14 NPT	15/16"	2-3/8"	107
RB20075H	2" x 3/4"	2"-11.5 NPT	3/4"-14 NPT	15/16"	2-3/8"	86
RB200100H	2" x 1"	2"-11.5 NPT	1"-11.5 NPT	15/16"	2-3/8"	74
RB200125H	2" x 1-1/4"	2"-11.5 NPT	1-1/4"-11.5 NPT	15/16"	2-3/8"	48
RB200150H	2" x 1-1/2"	2"-11.5 NPT	1-1/2"-11.5 NPT	15/16"	2-3/8"	38
RB250100H	2-1/2" x 1"	2-1/2"-8 NPT	1"-11.5 NPT	1-1/8"	2-13/16"	147
RB250125H	2-1/2" x 1-1/4"	2-1/2"-8 NPT	1-1/4"-11.5 NPT	1-1/8"	2-13/16"	121
RB250150H	2-1/2" x 1-1/2"	2-1/2"-8 NPT	1-1/2"-11.5 NPT	1-1/8"	2-13/16"	105
RB250200H	2-1/2" x 2"	2-1/2"-8 NPT	2"-11.5 NPT	1-1/8"	2-13/16"	59
RB300125H	3" x 1-1/4"	3"-8 NPT	1-1/4"-11.5 NPT	1-1/8"	3-7/16"	220
RB300150H	3" x 1-1/2"	3"-8 NPT	1-1/2"-11.5 NPT	1-1/8"	3-7/16"	210
RB300200H	3" x 2"	3"-8 NPT	2"-11.5 NPT	1-1/8"	3-7/16"	148
RB300250H	3" x 2-1/2"	3"-8 NPT	2-1/2"-8 NPT	1-1/8"	3-7/16"	96
RB350150H	3-1/2" x 1-1/2"	3-1/2"-8 NPT	1-1/2"-11.5 NPT	1-1/4"	4"	290
RB350200H	3-1/2" x 2"	3-1/2"-8 NPT	2"-11.5 NPT	1-1/4"	4"	238
RB350250H	3-1/2" x 2-1/2"	3-1/2"-8 NPT	2-1/2"-8 NPT	1-1/4"	4"	186
RB350300H	3-1/2" x 3"	3-1/2"-8 NPT	3"-8 NPT	1-1/4"	4"	82
RB400200H	4" x 2"	4"-8 NPT	2"-11.5 NPT	1-1/4"	4-1/2"	340
RB400250H	4" x 2-1/2"	4"-8 NPT	2-1/2"-8 NPT	1-1/4"	4-1/2"	285
RB400300H	4" x 3"	4"-8 NPT	3"-8 NPT	1-1/4"	4-1/2"	230
RB400350H	4" x 3-1/2"	4"-8 NPT	3-1/2"-8 NPT	1-1/4"	4-1/2"	126

Compliances:

Certified Made in the USA

UL 1203

UL Listed for Hazardous Locations,

Class I, Division 1 & 2, Groups A, B, C, D

Class II, Division 1, Groups E, F, G

Class II, Div 1 & 2

NEMA Standard FB1

Federal Standard A-A-50553

UL Standards: 514B, 467

CSA Standard: C22.2 No. 30

RoHS and REACH Compliant

Prop.65 CA Compliant

UNSPSC 39121312

Available Options:

Other Configurations and Material

Hazardous Locations in Aluminum Construction

Ordinary Locations in Steel and Aluminum

** Galvanized Plating Option Available Add suffix "G" to cat #'s

