

## Rigid Steel Comp. NT Coupling

**Size Range:** 1/2" - 4" 2 1/2" thru 4" are UL Listed & Approved for Use on Both EMT & Rigid

**Product Series:** NT Rigid / IMC Compression Coupling

**Material:** Solid Alloy Steel Construction

Zinc Plated with a Chromate Finish \*\*

**Made in the USA**

### Features:

Precision Machined Cut Threads

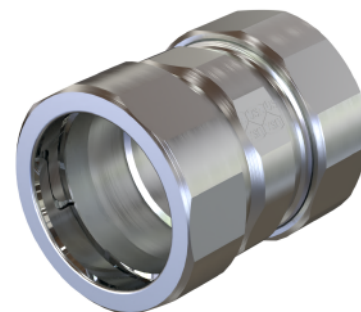
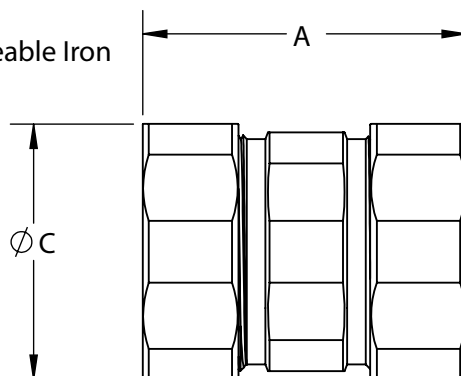
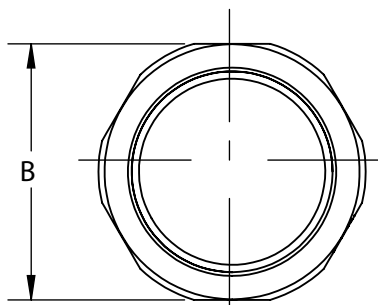
AMFICO **EZ Torque** Solid Steel Compression Nuts

Easily Torques Tight and Right

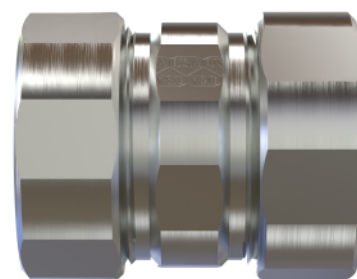
UL Rated Concrete Tight Suitable for Direct Burial \*\*\*

Suitable for Use with UL Listed Rigid AL Conduit

Twice the Strength and Durability with a Fraction of the Weight and Size of Malleable Iron



Compression Coupling



Full FLAT HEX Surface for EZ Torque Steel Compression Nuts Torques Tight & Right

Cat #	TRADE SIZE	A LENGTH	B HEX	C DIAMETER	Wt. Per/C
NT2760	1/2"	1-13/16"	1-1/8"	1-3/16"	16
NT2761	3/4"	2-1/8"	1-3/8"	1-7/16"	24
NT2762	1"	2-7/16"	1-11/16"	1-3/4"	48
NT2763	1-1/4"	2-13/16"	2-1/16"	2-3/16"	64
NT2764	1-1/2"	3-1/8"	2-15/16"	2-3/8"	110
NT2765	2"	3-1/4"	2-13/16"	2-7/16"	140
ERC250CPLG (1)	2-1/2"	3-13/16"	3-1/4"	3-7/16"	150
ERC300CPLG (1)	3"	3-15/16"	3-15/16"	4"	192
ERC350CPLG (1)	3-1/2"	3-15/16"	4-7/16"	4-9/16"	229
ERC400CPLG (1)	4"	4"	4-15/16"	5-1/8"	266

(1) 2 1/2" to 4" UL Listed and Rated for both EMT & Rigid Conduit. Product is stamped accordingly.

### Compliances:

Certified Made in the USA

UL 514B, 467

Suitable for Use with UL Listed Rigid AL Conduit

Concrete Tight and Suitable for Direct Burial \*\*\*

NEMA Standard FB1

Federal Standard A-A-50553

Certified for MIL-STD 810 Sinusoidal Vibrations

CSA Standard: C22.2 No. 18F

RoHS Compliant

REACH Compliant

CA Prop 65 Compliant

UNSPSC 39121311



### Available OPTIONS:

RainTight Configuration - "RT series" See Catalog Page

\*\* Galvanized Plating - Option

For this Option, Add Suffix "G" to Above Cat Number

Color Coded Painted (powder coated) Fittings - See Catalog Page

\*\*\* Rain Tight Series Recommended for Direct Burial Requirements