

Rigid Steel Comp. NT Connector

Size Range: 1/2" - 4" 2 1/2" thru 4" are UL Listed & Approved for Use on Both EMT & Rigid

Product Series: NT Rigid / IMC Compression Connector

Material: Solid Alloy Steel Construction

Zinc Plated with a Chromate Finish **

Made in the USA

Features:

Precision Machined Cut Threads

AMFICO EZ **Torque** Solid Steel Compression Nut

Zinc Plated with a Chromate Finish **

UL Rated Concrete Tight Suitable for Direct Burial ***

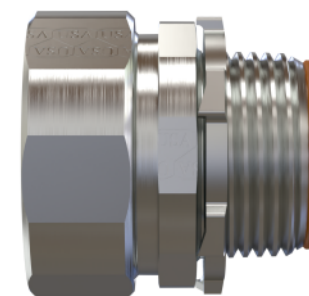
Suitable for Use with UL Listed Rigid AL Conduit

Twice the Strength and Durability with
a Fraction of the Weight and Size of Malleable Iron

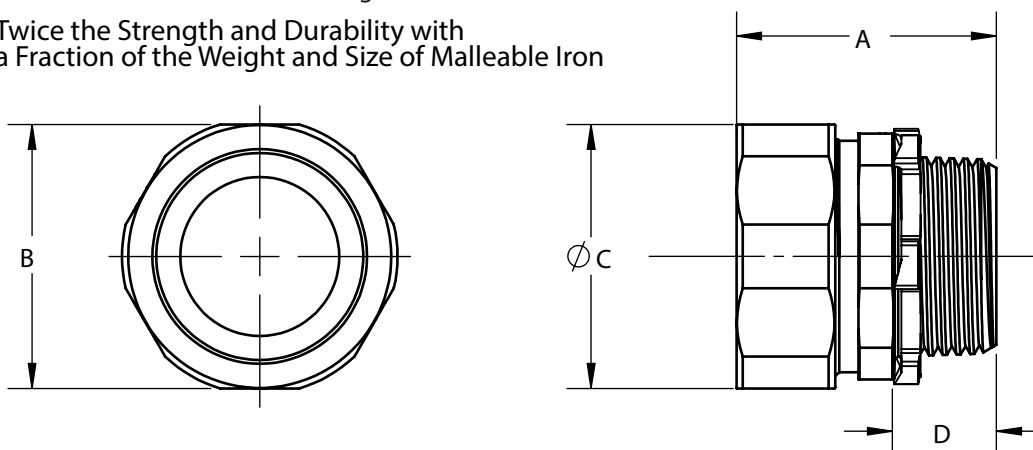
Full FLAT HEX Surface for
EZ **Torque** Steel Compression Nut
Torques Tight & Right



Compression Connector
Below Shown with
Optional Insulated Bushing



Furnished with a UL Listed
Steel Locknut



Cat #	TRADE SIZE	A LENGTH	B HEX	C DIAMETER	D THREAD LENGTH	Wt. Per/C
NT2750	1/2"	1-1/2"	1-1/8"	1-3/16"	1/2"	13
NT2751	3/4"	1-5/8"	1-3/8"	1-7/16"	1/2"	20
NT2752	1"	1-15/16"	1-11/16"	1-3/4"	11/16"	36
NT2753	1-1/4"	2-1/8"	2-1/16"	2-3/16"	11/16"	48
NT2754	1-1/2"	2-3/8"	2-5/16"	2-3/8"	3/4"	70
NT2755	2"	2-1/2"	2-13/16"	2-7/8"	3/4"	100
ERC250CONN (1)	2-1/2"	3-7/16"	3-1/4"	3-7/16"	1"	120
ERC300CONN (1)	3"	4"	3-15/16"	4"	1"	165
ERC350CONN (1)	3-1/2"	4-9/16"	4-7/16"	4-9/16"	1"	201
ERC400CONN (1)	4"	5-1/8"	4-15/16"	5-1/8"	1"	237

(1) 2 1/2" to 4" UL Listed and Rated for both EMT & Rigid Conduit. Product is stamped accordingly.

Compliances:

Certified Made in the USA

UL 514B, 467

Suitable for Use with UL Listed Rigid AL Conduit

Concrete Tight and Suitable for Direct Burial ***

NEMA Standard FB1

Federal Standard A-A-50553

Certified for MIL-STD 810 Sinusoidal Vibrations

CSA Standard: C22.2 No. 18F

RoHS Compliant

REACH Compliant

CA Prop 65 Compliant

UNSPSC 39121311



Available OPTIONS:

Factory Installed 105° UL Rating Insulated Bushing-

For this Option, Add Suffix B to Above Cat Number

RainTight Configuration -"RT series" See Catalog Page

** Galvanized Plating - Option

For this Option, Add Suffix "G" to Above Cat Number

Color Coded Painted (powder coated) Fittings- See Catalog Page

*** Rain Tight Series Recommended for
Direct Burial Requirements