

Uni-BRACE™

Wall, Floor, Ceiling
Conduit Brace for
EMT and Rigid Conduit

Precision Machined
Solid Steel Construction
Zinc or Galvanized Plated
Color Coded Available
Made in the USA

Finally, a Unique Thru-the-Wall Solution

USE YOUR CONDUIT, CUT to YOUR NEEDS,
BRACED with OUR Uni-BRACE for the
PERFECT COMBINATION of
SUPPORT and FIRE PROTECTION.

Oversized or Rough Openings Are a Thing of the Past

Job Ready & an EZ Install

Use as a Sleeve, Brace, or Thru the Wall Support
Add a Length of YOUR Conduit for an Exact Length Sleeve
Use Two as a Double Brace to Support Your Long Conduit Runs



Will Not Bend, Flex, or Crack

Patented
Made in the USA

Close and Seal Wall, Floor or Ceiling Openings
Brace and Support 1" to 4" EMT or Rigid Conduit
No Screws Required to Hold or Support Brace,
Slides Down Conduit to Position Then Simply Tighten
The Perfect Clean Entry Closure in Public Areas



Your Conduit Entry
Never Looked So Good ,
Never "Held Up" So Well, Until
Uni-BRACE™. Grips Tight and Right

RainTIGHT Option Available

Use Our Color Coded Braces to
Easily Identify Your Wiring Runs

Time to ReThink Your Conduit Sleeves & Supports

AMERICAN FITTINGS
Corporation



Manufactured in the USA Since 1946

t: 800.221.5268
amftgs.com

Think American





EMT & Rigid Conduit Sleeve

A Complete Out of the Box Bracing or Conduit Sleeve Solution - "Just Add Your Conduit"



Uni-BRACE™

Available in Trade Size 1" - 4"

PATENTED



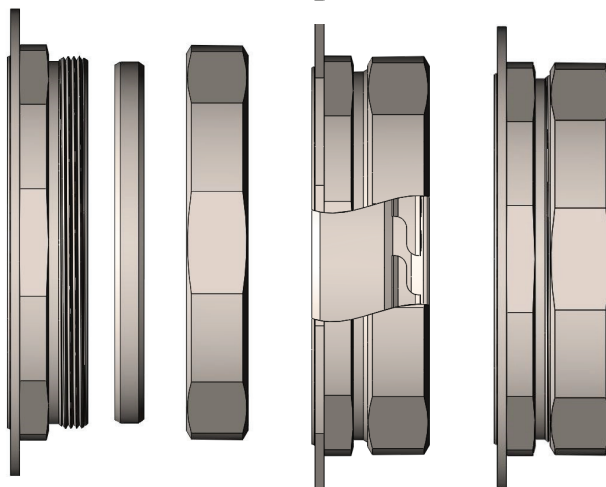
**2 1/2" to 4" Compression Fittings
Are Rated & Listed by UL for
Use on Either
EMT & Rigid Conduit**

*Fully Supports Conduit and
Prohibits Conduit from Moving*

*Integrated Alloy Steel
Zinc Plated
Escutcheon Plate*

*Smooth ID & Rounded Edges
Provides a
Fast and Safe Wire Pull*

*No Bushing Required
RainTight Option Available
Sealing Ring and Gasket*



Precision Machined Threads
on Connector Body & Nut
Patented Compression Ring

Steel Construction,
Zinc Plated, Chromate
Compression Connector

Flat Wrenching Surface, Accommodates Channel Lock to Wrench Secure

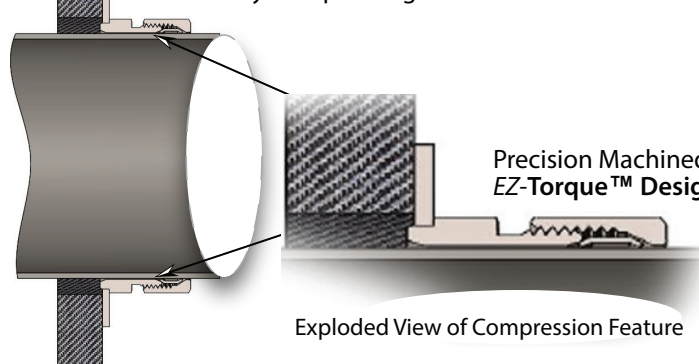
No Need to Disassemble, Simply Loosen Nut and Slide on Conduit

Once Tightened, Completely Braces and Secures Conduit from
Forward, Backward & Lateral Movement

Fully Machined ID to
Assist and Provide a Fast & Easy Wire Pull
NEVER a Burr or Edge

Low Profile, Modern Design to Blend with Conduit

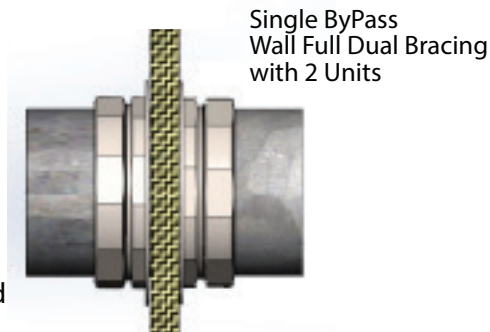
Secures Conduit Against Wall or Structure
While Fully Compressing on Conduit



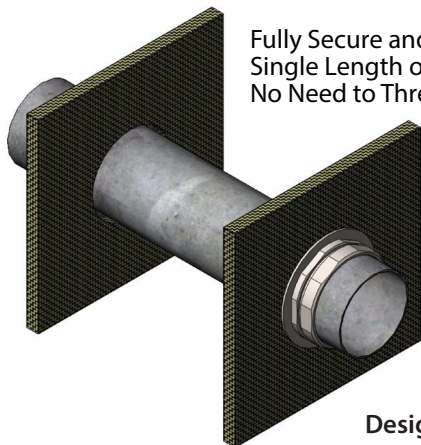
Precision Machined Steel Threads
EZ-Torque™ Design

Exploded View of Compression Feature

Uni-BRACE™ Locks Tight & Right, Can be Removed and Repositioned



Single Bypass
Wall Full Dual Bracing
with 2 Units



Fully Secure and Brace
Single Length or Extended Conduit Runs
No Need to Thread Conduit

Designed & Manufactured in the USA by
AMERICAN FITTINGS Corporation



Use Two Units to Fully Brace Conduit
On Both Multiple Pass Throughs

Expand Your Runs
Gain Bracing While
Locking Your Conduit in Place

Wall Penetration Sleeve & Conduit Brace

Since 1946

Size Range: 1" to 4" Alloy Steel

Zinc Plated with Chromate Finish ***

2-1/2" through 4" Compression Fittings are

UL Listed & Approved for Both EMT & Rigid Conduit *

EMT, Rigid and IMC Conduit *

A Complete Out of the Box Bracing or Conduit Sleeve Solution - "Just Add Your Conduit"

Conduit Brace and Wall Sleeve Can Be Used for EMT and Rigid Conduit on Internal & External Walls, & Enclosures, Boxes

Locks Your Conduit in Place on Single or Both Ends of Walls, Ceilings, or Floors

Fully Supports and Braces Conduit Loads

Provides Support and Replaces Straps and Hangers

Creates and Seals Entry Through Holes

Provides a Finished Look to Conduit Run in Public Areas

Uni-BRACE™

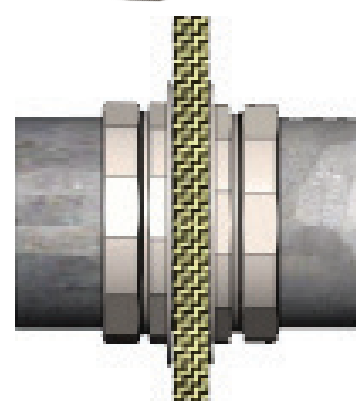
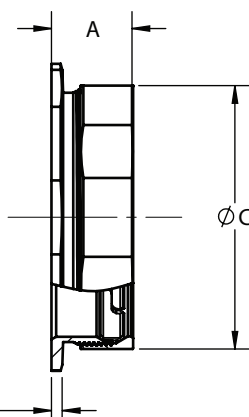
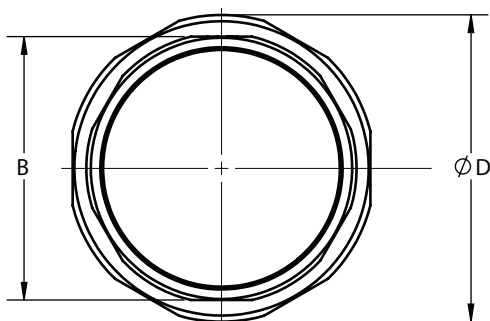
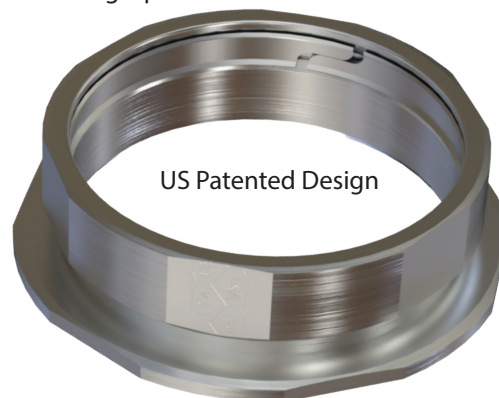
Featuring:

Connector Body & Compression Nut
Machined from Solid Alloy Steel Bar Stock

Flat Hex Surfaces for Full and EZ-Torque™

Fully Precisioned Machine Cut Threads

Galvanized Plating Option Available **



Save Time & Money

No Need to Thread Rigid Conduit Provides Full Support and Bracing

No Need to Cut Pipe for Pass-Through Walls, Run Full Length of Pipe

Illustrated
Thru Wall Application
2 Braces on Conduit

CAT #	Trade Size	A Length	B Hex	C Diameter	D Outer Diameter	E Brace Thickness	Wt. Per/C
ERCB100*	1" *	1-1/16"	1-7/16"	1-1/2"	2-1/16"	3/16"	18
ERCB200*	2" *	1-3/8"	2-9/16"	2-11/16"	3-3/8"	3/16"	45
ERCB250	2-1/2"	1-5/16"	3-1/4"	3-3/8"	4"	3/16"	60
ERCB300	3"	1-7/16"	3-15/16"	4"	4-9/16"	3/16"	78
ERCB350	3-1/2"	1-7/16"	4-7/16"	4-9/16"	5-1/8"	3/16"	80
ERCB400	4"	1-11/16"	4-15/16"	5-1/16"	6-1/2"	3/16"	183

* 1" and 2" rated for EMT Only Consult Factory for Other Sizes

Dimensions shown are + 1/16" - 1/32"

*** Plating Options: Galvanized Plating Option: Add suffix "G" to cat #

Compliances:

Certified Made in the USA

Compression Fittings Are UL Listed

Acts as a Fire Stop When Used with UL Rated Fire Stop

Putty Seal or Conduit Wrap ***

Rated Mil-STD 810 Sinusoidal Vibration Test

Federal Standard A-A-50553

Compression Fittings Comply to UL Standards: 514B, 467

CA Prop.65 Compliance

RoHS Compliant

Uni-BRACE™ Can Be Color Coded

QUICKLY IDENTIFY CRITICAL SYSTEMS

Fire alarms, security systems, fiber optics, high- and low-voltage circuits, data circuit with Color Coded Uni-BRACE™ for Your Thru-the-Wall Sleeves and Conduit Runs.

*** Fire Stop Ratings and NFPA Code Requirements responsibility rest strictly left with the installer and design firm.





Better Products, Better Ideas, Better Value, Think AMERICAN



AMFICO

Innovating the Next Generation of Electrical Fittings

EMT

RIGID CONDUIT

LIQUID TIGHT

FLEXIBLE CORD

FLEX METAL CONDUIT

Founded in 1946, a family owned and operated, 3rd generation business, we have grown into the world's largest manufacturer of alloy steel electrical fittings. Headquartered in New Jersey, all products are sold exclusively through Authorized Stocking Distributors.

Our products are made in the USA, and they will exceed your requirements and expectations, not your budget. We never apologize why our products are made in America; we suggest you ask our competitors "why they don't"! Random lot shipping inspection in a foreign country can never replace integrity manufactured into raw materials and manufacturing in this country. Don't consider us as just a government project supplier, consider us as your fitting supplier for all types of projects.

Sold Exclusively Through Authorized Distributors

We Are the ONLY Manufacturer of a
Full Range of Steel Electrical Fittings
Made in the USA



Manufacturing and Corporate Offices

AMERICAN FITTINGS Corporation

17-10 Willow Street Fair Lawn, NJ 07410

t: 800.221.5268 | f: 201.664.1175

Online: amftgs.com e: info@amftgs.com

Follow us on

