

EMT Steel Compression Color Coded

Size Range: 1/2" - 4" 2 1/2" thru 4" are UL Listed & Approved for Use on Both EMT & Rigid

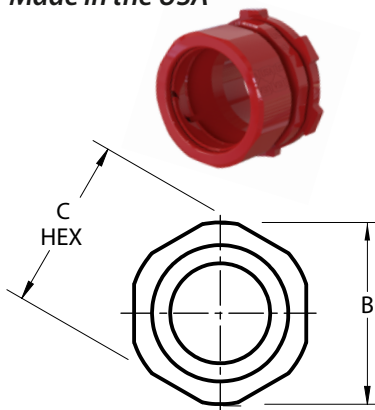
Product Series: EC - EMT Compression Connector

Material: Solid Alloy Steel Construction Powder Coated

Made in the USA

Industrial SPEC-grade

Fire alarms, security systems, fiber optics, high- and low-voltage circuits, data circuits: without a system, trying to tell their wires apart can be tricky. Color coded fittings makes it easy. Contractors avoid the hassels of spray painting and taping.



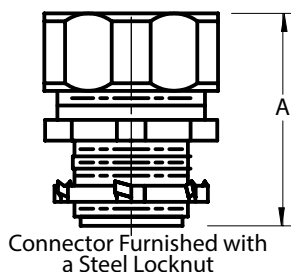
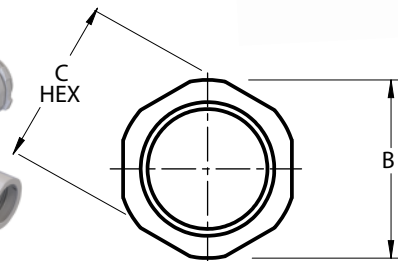
SPECTrum Steel EMT FITTINGS

Powder Coating Will Not Flake or Crack.

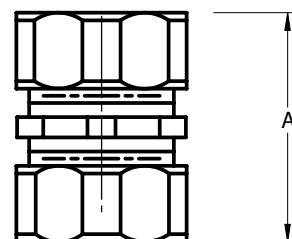
Steel Fitting Twice the Durability of Casr Products.

Color Coded Power Coated AMFICO EMT fittings consists of set screw, compression, insulated and non-insulated.

While red is the most commonly used, other colors offered include white, blue, green, yellow, black, and orange. *



Connector Furnished with a Steel Locknut



Connectors						Couplings					
Cat#*	Trade Size"	A	B	C	Wt./c	Cat#	Trade Size"	A	B	C	Wt./c
EC750US-R	1/2"	1-1/8"	1"	15/16"	8	EC760US-R	1/2"	1-3/8"	1"	15/16"	8
EC751US-R	3/4"	1-3/16"	1-7/32"	1-3/16"	12	EC761US-R	3/4"	1-7/16"	1-7/32"	1-3/16"	13
EC752US-R	1	1-5/16"	1-1/2"	1-7/16"	19	EC762US-R	1	1-17/32"	1-1/2"	1-7/16"	19
EC753US-R	1-1/4"	1-9/16"	1-7/8"	1-13/16"	30	EC763US-R	1-1/4"	1-27/32"	1-7/8"	1-13/16"	30
EC754US-R	1-1/2"	1-11/16"	2-5/32"	2-1/16"	46	EC764US-R	1-1/2"	2-1/16"	2-5/32"	2-1/16"	46
EC755US-R	2"	1-7/8"	2-7/8"	2-9/16"	55	EC765US-R	2"	2-1/4"	2-7/8"	2-9/16"	60
ERC250CONN-R	2-1/2"	3-1/8"	3-13/32"	3-1/4"	120	ERC250CPLG-R	2-1/2"	3-5/8"	3-13/32"	3-1/4"	133
ERC300CONN-R	3"	3-1/16"	4"	3-29/32"	165	ERC300CPLG-R	3"	3-11/16"	4"	3-29/32"	171
ERC350CONN-R	3-1/2"	3-1/16"	4-9/16"	4-13/32"	201	ERC350CPLG-R	3-1/2"	3-19/32"	4-9/16"	4-13/32"	205
ERC400CONN-R	4"	3-1/16"	5-3/32"	4-29/32"	237	ERC400CPLG-R	4"	3-5/8"	5-3/32"	4-29/32"	238

Compliances:

Certified Made in the USA

UL 514B

NEMA Standard FB1

Federal Standard A-A-50553

UL Standards: 514B, 467

Certified for MIL-STD 810 Sinusoidal Vibrations

CSA Standard: C22.2 No. 18F

RoHS Compliant

REACH Compliant

CA Prop 65 Compliant

UNSPSC 39121434



Features and Options:

Solid Alloy Steel Construction, Precision Machined
Connector Furnished with Steel Locknut-

Optional: Insulated Throat Bushing Available - Add Suffix "B"

* **Color Options Available** (minimum qty's may apply):

Remove Suffix "R" from Cat # and Add Suffix:

- O	Orange	Fiber Optics Circuits
- Y	Yellow	High Voltage Wiring
- BL	Blue	Low Voltage Wiring Data Com
- BK	Black	Architectural Design
- G	Green	Hospitals & Healthcare Critical Equipment
- W	White	Architectural Design