

## EMT Steel Compression Coupling

**Size Range:** 1/2" - 4" 2 1/2" thru 4" are UL Listed & Approved for Use on Both EMT & Rigid

**Product Series:** EC - EMT Compression Coupling

**Material:** Solid Alloy Steel Construction

Zinc Plated with a Chromate Finish \*\*

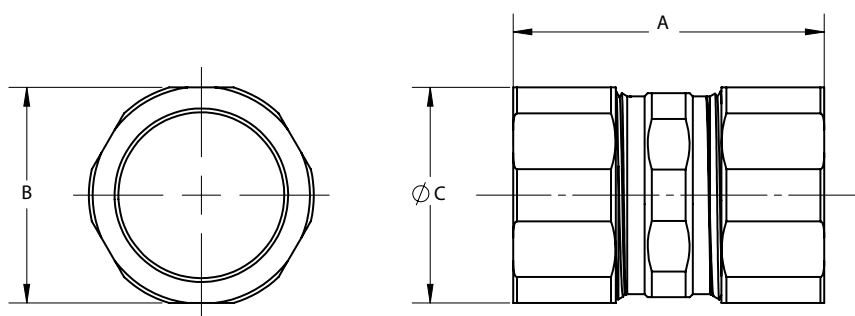
**Made in the USA**

### Features:

Precision Machined Cut Threads

UL Rated Concrete Tight

Twice the Strength and Durability of ALL Die Cast and Malleable Products



CAT #	TRADE SIZE	A LENGTH	B HEX	C DIAMETER	Wt. Per/C
EC760US	1/2"	1-3/8"	15/16"	1"	9
EC761US	3/4"	1-9/16"	1-3/16"	1-1/4"	13
EC762US	1"	1-5/8"	1-7/16"	1-1/2"	18
EC763US	1-1/4"	2"	1-13/16"	1-15/16"	29
EC764US	1-1/2"	2-1/4"	2-1/16"	2-3/16"	42
EC765US	2"	2-3/8"	2-9/16"	2-11/16"	61
ERC250CPLG (1)	2-1/2"	3-13/16"	3-1/4"	3-7/16"	127
ERC300CPLG (1)	3"	3-15/16"	3-15/16"	4"	167
ERC350CPLG (1)	3-1/2"	3-15/16"	4-7/16"	4-9/16"	204
ERC400CPLG (1)	4"	4"	4-15/16"	5-1/8"	235

(1) 2 1/2" to 4" UL Listed and Rated for Rigid Conduit. Product is stamped accordingly.

### Compliances:

Certified Made in the USA

UL 514B, 467

Compression Fittings Concrete Tight

Suitable for Direct Burial \*\*\*

NEMA Standard FB1

Federal Standard A-A-50553

Certified for MIL-STD 810 Sinusoidal Vibrations

CSA Standard: C22.2 No. 18F

RoHS Compliant

REACH Compliant

CA Prop 65 Compliant

UNSPSC 39121434



## Industrial SPEC-grade



Compression Coupling



Full FLAT HEX Surface with  
EZ Torque Steel Compression Nuts  
Torques Tight & Right

### Available OPTIONS:

**RainTight** Configuration - "RT series" See Catalog Page

\*\* Galvanized Plating - Option

For this Option, Add Suffix "G" to Above Cat Number

Color Coded Painted (powder coated) Fittings - See Catalog Page

\*\*\* Rain Tight Series Recommended for

Direct Burial Requirements