

## EMT Steel Compression Connector

**Size Range:** 1/2" - 4" 2 1/2" thru 4" are UL Listed & Approved for Use on Both EMT & Rigid

**Product Series:** EC - EMT Compression Connector

**Material:** Solid Alloy Steel Construction

Zinc Plated with a Chromate Finish \*\*

**Made in the USA**

### Features:

Precision Machined Cut Threads

UL Rated Concrete Tight

Full FLAT HEX Surface with  
EZ Torque Steel Compression Nut  
Torques Tight & Right

Twice the Strength and Durability of ALL Die Cast and Malleable Products

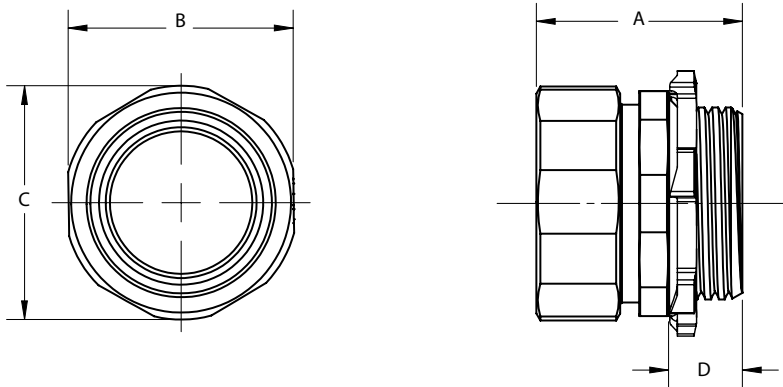
**Industrial SPEC-grade**



Compression Connector  
Above with Insulated Bushing



Furnished with a UL Listed  
Steel Locknut



Cat #	TRADE SIZE	A LENGTH	B HEX	C DIAMETER	D THREAD LENGTH	Wt. Per/C
EC750US	1/2"	1-3/16"	15/16"	1"	3/8"	8
EC751US	3/4"	1-1/4"	1-3/16"	1-1/4"	7/16"	12
EC752US	1"	1-1/2"	1-7/16"	1-1/2"	7/16"	19
EC753US	1-1/4"	1-7/8"	1-13/16"	1-7/8"	1/2"	30
EC754US	1-1/2"	2-3/16"	2-1/16"	2-3/16"	9/16"	46
EC755US	2"	2-7/8"	2-9/16"	2-7/8"	5/8"	55
ERC250CONN (1)	2-1/2"	3-7/16"	3-1/4"	3-7/16"	1"	120
ERC300CONN (1)	3"	4"	3-15/16"	4"	1"	165
ERC350CONN (1)	3-1/2"	4-9/16"	4-7/16"	4-9/16"	1"	201
ERC400CONN (1)	4"	5-1/8"	4-15/16"	5-1/8"	1"	237

(1) 2 1/2" to 4" UL Listed and Rated for Rigid Conduit. Product is stamped accordingly.

### Compliances:

Certified Made in the USA

UL 514B, 467

Compression Fittings Concrete Tight

Suitable for Direct Burial \*\*\*

NEMA Standard FB1

Federal Standard A-A-50553

Certified for MIL-STD 810 Sinusoidal Vibrations

CSA Standard: C22.2 No. 18F

RoHS Compliant

REACH Compliant

CA Prop 65 Compliant

UNSPSC 39121434



### Available OPTIONS:

Factory Installed 105° UL Rating Insulated Bushing-  
For this Option, Add Suffix B to Above Cat Number

**RainTight Configuration - "RT series" See Catalog Page**

\*\* Galvanized Plating - Option

For this Option, Add Suffix "G" to Above Cat Number

Color Coded Painted (powder coated) Fittings- See Catalog Page

\*\*\* Rain Tight Series Recommended for  
Direct Burial Requirements