

Cord Grip Connectors

Size Range: 3/8" - 3"

Product Series: CG Series Cord Grip Cable Glands

**Materials: Alloy Steel Zinc Plated with Chromate Finish
Stainless Steel and Aluminum Material Option***

Applications:

SPEC-grade Cord Grip connectors use with non-armored flexible cord non-armored glands are installed to provide a means for passing a cord, unarmored cable or flexible conduit into an enclosure. These cable glands are listed for use with flexible cords, including Type S, SO, STO, ST, SJ, SJT, SJTO and SVO. are the ideal choice for environment and applications where product integrity is your prime concern. AMFICO cord connectors are suitable and are currently used in many industries including; petroleum, food processing, chemical, wastewater treatment, HVAC, aerospace, electric power, automobile, paper mills, pumps.

CG Connectors are entirely manufactured in our factory in Fair Lawn, NJ. Precision machined from solid bar stock. There is not a stronger or more versatile cord connector made. Strong NPT threads ensured you are environmentally protected and protect against cord slide. Grommets are also manufactured by us in Fair Lawn, NJ, color-coded by cable range for identification.

Grommet material is Santoprene, Flame retardant: UV resistant and stabilized against copper and other metal-catalyzed degradation. Santoprene is UL 94 V-0 rated and UL 94 5VA rated. Detergent-resistant - Santoprene has excellent form and property

Also Available

CG Kits

1 Package Fits All Cable Ranges for EACH Trade Size

True Cut Threads NPT Threads
Precision Machined from
Solid Stainless Steel Bar Stock

UL Listed
Locknut &
Sealing Washer
Purchased Separately

Color Coded Sealing Grommet Santoprene*

Seat Precisely in Connector Body, are
Designed and Color Coded for SPECIFIC Cable Ranges.
Provides a Liquid Tight Connection.
Material Allows Cable to be Pulled Easily,
Yet Holds Irregular Cable Securely

NPT Threads

Solid Corrosion Resistant Alloy Steel Body ***
Precision Machine Cut Threads - Never Flatten, Never Cross
Consistent Centerline to Compression Nut
Guarantees Environmentally Sealing All Cords Correctly

EZ-Torque Hex Design Nut
Solid Alloy Steel Precision Machined
Compression Nut, Grips Tight & Right
Vibration Resistant
Chamfered Dome Sheds Moisture

Precision Machined Steel Compression Ring -
Prevents Distortion of the Sealing Grommet
Exclusive Engineered Design Slips on Quickly &
Grips the Jacket of the Cable, & Uniformly Compresses
Sealing Grommet. Assures a Perfect Moisture Seal, While
Fully Preventing Pullout Under Extreme Conditions

Operating Temperature Range (normal use): -20°C to +105°C (-4°F to +221°F)

Compliances:

Certified Made in the USA

UL 514B

NEMA Standard FB1 Rated Liquid Tight NPT Threads

Federal Standard A-A-50553

UL Rated Suitable for Hazardous Locations

NEC: Class I, Division 2

Class II, Divisions 1 and 2

Class III, Divisions 1 and 2

NEC 501-4(b), 505-4(a), 503-3(a)

CSA Standard: C22.2 No. 18F

RoHS and REACH Compliant

CA Prop 65 Compliant

UNSPC 39121719



File # E96445

Options:

Size Range by Material Offering:

* Alloy Steel 3/8" - 3"

* Aluminum - Copper-Free 1/2" - 1" Add Suffix AL to Cat #

* Stainless Steel Type 316 1/2" - 1" Add Suffix SST Cat#

CG Kits 1/2"-1" Stl, SS and Aluminum One Kit Fits Entire Range

All CG Series Configurations Available:

Straights, 90°, 45°, Wire Mesh Strain Relief Grip

Connectors with Multiple Hole Cable Entry

TYPE SE Service Entrance Flat Cable Connectors

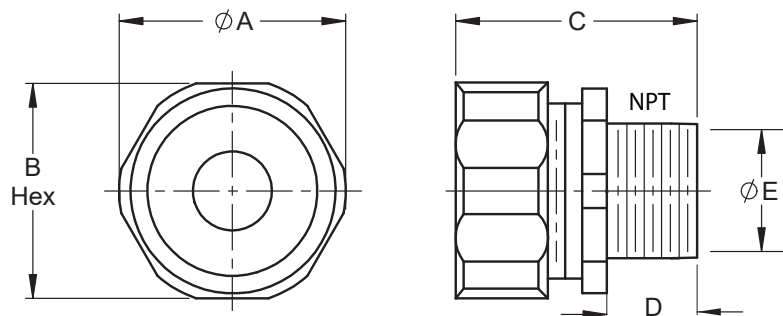
Non-Metallic Cord Grip Connectors

Locknuts Nuts & Sealing Washers Available Sold Separately

Straight Cord Grip Connectors

Trade Sizes 3/8" to 1"

Industrial SPEC-grade



Dimensions - Table 1

CG KIT Cat #	Cat #	Trade Size	Cable Ranges Min Max	Grommet Color	A Diameter	B Hex	C Length	D NPT Thread Length	Wt. Per/C
Each Kit Covers This Range CG50K 1/2" .150-.650	CG1238AM	3/8"	.125 .187	Red	1-1/4"	7/8"	15/16"	7/16"	8
	CG1838AM	3/8"	.187 .312	Brown	1-1/4"	7/8"	15/16"	7/16"	8
	CG3138AM	3/8"	.312 .437	Yellow	1-1/4"	7/8"	15/16"	7/16"	8
	CG1250AM	1/2"	.125 .187	Red	1-5/16"	1-1/16"	1-1/8"	1/2"	12
	CG1 (1)	1/2"	.150 .250	Red	1-5/16"	1-1/16"	1-1/8"	1/2"	12
	CG50A250	1/2"	.150 .250	Red	1-5/16"	1-1/16"	1-1/8"	1/2"	10
	CG1850AM	1/2"	.187 .312	Brown	1-5/16"	1-1/16"	1-1/8"	1/2"	12
	CG2 (1)	1/2"	.250 .350	White	1-5/16"	1-1/16"	1-1/8"	1/2"	12
	CG50A350	1/2"	.250 .350	White	1-5/16"	1-1/16"	1-1/8"	1/2"	10
	CG3150AM	1/2"	.312 .437	Yellow	1-5/16"	1-1/16"	1-1/8"	1/2"	12
	CG3150AM	1/2"	.312 .437	Yellow	1-1/4"	7/8"	15/16"	7/16"	8
	CG3 (1)	1/2"	.350 .450	Blue	1-5/16"	1-1/16"	1-1/8"	1/2"	12
	CG50A450	1/2"	.350 .450	Blue	1-5/16"	1-1/16"	1-1/8"	1/2"	10
	CG3750AM	1/2"	.375 .500	Purple	1-5/16"	1-1/16"	1-1/8"	1/2"	12
	CG4 (1)	1/2"	.450 .560	Green	1-5/16"	1-1/16"	1-1/8"	1/2"	12
	CG50A560	1/2"	.450 .560	Green	1-5/16"	1-1/16"	1-1/8"	1/2"	10
	CG5050AM	1/2"	.500 .625	Pink	1-5/16"	1-1/16"	1-1/8"	1/2"	12
	CG5 (1)	1/2"	.560 .650	Brown	1-5/16"	1-1/16"	1-1/8"	1/2"	12
	CG50A650	1/2"	.560 .650	Brown	1-5/16"	1-1/16"	1-1/8"	1/2"	10
	CG6250AM	1/2"	.625 .750	Orange	1-9/16"	1-1/4"	1-7/16"	1/2"	16
CG75K 3/4" .150-.880	CG1275AM	3/4"	.125 .250	Blue	1-5/8"	1-1/4"	1-7/16"	9/16"	18
	CG6 (1)	3/4"	.150 .250	Red	1-5/16"	1-3/16"	1-1/4"	1/2"	18
	CG75A250	3/4"	.150 .250	Red	1-3/8"	1-3/16"	1-1/4"	9/16"	16
	CG7 (1)	3/4"	.250 .350	White	1-5/16"	1-3/16"	1-1/4"	1/2"	18
	CG75A350	3/4"	.250 .350	White	1-3/8"	1-3/16"	1-1/4"	9/16"	16
	CG2575AM	3/4"	.250 .375	Green	1-5/8"	1-1/4"	1-7/16"	9/16"	18
	CG8 (1)	3/4"	.350 .450	Blue	1-5/16"	1-3/16"	1-1/4"	1/2"	18
	CG75A450	3/4"	.350 .450	Blue	1-3/8"	1-3/16"	1-1/4"	9/16"	16
	CG3775AM	3/4"	.375 .500	Purple	1-5/8"	1-1/4"	1-7/16"	9/16"	18
	CG9 (1)	3/4"	.450 .560	Green	1-5/16"	1-3/16"	1-1/4"	1/2"	18
	CG75A560	3/4"	.450 .560	Green	1-3/8"	1-3/16"	1-1/4"	9/16"	16
	CG7550AM	3/4"	.500 .625	Pink	1-5/8"	1-1/4"	1-7/16"	9/16"	18
	CG10 (1)	3/4"	.560 .650	Brown	1-5/16"	1-3/16"	1-1/4"	1/2"	18
	CG75A650	3/4"	.560 .650	Brown	1-3/8"	1-3/16"	1-1/4"	9/16"	16
	CG6275AM	3/4"	.625 .750	Orange	1-5/8"	1-1/4"	1-7/16"	9/16"	18
	CG11 (1)	3/4"	.650 .750	Yellow	1-9/16"	1-1/4"	1-7/16"	9/16"	20
	CG75B750	3/4"	.650 .750	Yellow	1-5/8"	1-5/16"	1-3/8"	9/16"	18
	CG12 (1)	3/4"	.750 .850	Purple	1-9/16"	1-1/4"	1-7/16"	9/16"	20
	CG75B850	3/4"	.750 .850	Purple	1-5/8"	1-5/16"	1-3/8"	9/16"	18
	CG7575AM	3/4"	.750 .875	Grey	1-5/8"	1-1/4"	1-7/16"	9/16"	18
CG100K 1" .375-.750	CG37100AM	1"	.375 .500	Purple	1-3/4"	1-7/16"	1-1/2"	11/16"	26
	CG13 (1)	1"	.450 .560	Green	1-3/4"	1-7/16"	1-1/2"	11/16"	30
	CG100B560 ***	1"	.450 .560	Green	1-3/4"	1-7/16"	1-1/2"	11/16"	26
	CG50100AM	1"	.500 .625	Pink	1-3/4"	1-7/16"	1-1/2"	11/16"	26
	CG14 (1)	1"	.560 .650	Brown	1-3/4"	1-7/16"	1-1/2"	11/16"	30
	CG100B650 ***	1"	.560 .650	Brown	1-3/4"	1-7/16"	1-1/2"	11/16"	26
	CG62100AM	1"	.625 .750	Orange	1-3/4"	1-7/16"	1-1/2"	11/16"	26
	CG15 (1)	1"	.650 .750	Yellow	1-3/4"	1-7/16"	1-1/2"	11/16"	30
	CG100B750 ***	1"	.650 .750	Yellow	1-3/4"	1-7/16"	1-1/2"	11/16"	26
	CG16 (1)	1"	.750 .850	Purple	1-3/4"	1-7/16"	1-1/2"	11/16"	30
	CG100B850 ***	1"	.750 .850	Purple	1-3/4"	1-7/16"	1-1/2"	11/16"	26
	CG75100AM	1"	.750 .875	Grey	1-13/16"	1-1/2"	1-11/16"	5/8"	28
	CG17 (1)	1"	.850 .950	Grey	1-13/16"	1-1/2"	1-11/16"	11/16"	30
	CG100C950 ***	1"	.850 .950	Grey	1-3/4"	1-9/16"	1-5/8"	11/16"	28
	CG87100AM	1"	.875 1.000	Red	1-13/16"	1-1/2"	1-11/16"	5/8"	28
	CG18 (1)	1"	.950 1.050	Black	1-13/16"	1-1/2"	1-11/16"	11/16"	30
	CG100C1050 ***	1"	.950 1.050	Black	1-3/4"	1-9/16"	1-5/8"	11/16"	28
	CG100100AM	1"	1.000 1.125	Blue	1-13/16"	1-1/2"	1-11/16"	5/8"	28

(1) These Cat #'s are furnished with an installed locknut & sealing washer.

All other items locknut & washer are sold separately.

Straight Cord Grip Connectors

Trade Sizes 1-1/4" to 3"

Industrial SPEC-grade

Dimensions - Table 2

CG KIT Cat #	Cat #	Trade Size	Cable Ranges		Grommet Color	A Diameter	B Hex	C Length	D NPT Thread Length	Wt. Per/C
Each Kit Covers This Range	CG125C850	1-1/4"	.750	.850	Purple	1-7/8"	1-13/16"	1-7/8"	11/16"	44
	CG19 (1)	1-1/4"	.750	.850	Purple	1-7/8"	1-13/16"	1-7/8"	11/16"	48
	CG75125AM	1-1/4"	.750	.875	Grey	1-7/8"	1-7/8"	1-7/8"	11/16"	42
	CG125C950	1-1/4"	.850	.950	Grey	1-7/8"	1-13/16"	1-7/8"	11/16"	44
	CG20 (1)	1-1/4"	.850	.950	Grey	1-7/8"	1-13/16"	1-7/8"	11/16"	48
	CG87125AM	1-1/4"	.875	1.000	Red	1-9/16"	1-5/8"	1-7/8"	11/16"	42
	CG125D1050	1-1/4"	.950	1.050	Black	1-15/16"	2"	2-1/16"	11/16"	40
	CG21 (1)	1-1/4"	.950	1.050	Black	1-7/8"	1-7/8"	2-1/8"	11/16"	46
	CG100125AM	1-1/4"	1.000	1.125	Blue	1-7/8"	1-7/8"	1-7/8"	11/16"	40
	CG125D1150	1-1/4"	1.050	1.150	Orange	1-15/16"	2"	2-1/16"	11/16"	40
	CG22 (1)	1-1/4"	1.050	1.150	Orange	1-7/8"	1-7/8"	2-1/8"	11/16"	46
	CG112125AM	1-1/4"	1.125	1.250	Brown	1-7/8"	1-7/8"	2-1/8"	11/16"	40
	CG125D1250	1-1/4"	1.150	1.250	Red	1-15/16"	2"	2-1/16"	11/16"	40
	CG23 (1)	1-1/4"	1.150	1.250	Red	1-7/8"	1-7/8"	2-1/8"	11/16"	46
	CG125D1375	1-1/4"	1.250	1.375	White	1-15/16"	2"	2-1/16"	11/16"	40
	CG24 (1)	1-1/4"	1.250	1.375	White	1-7/8"	1-7/8"	2-1/8"	11/16"	46
	CG125125AM	1-1/4"	1.250	1.375	Green	1-7/8"	1-7/8"	2-1/8"	11/16"	40
	CG137125AM	1-1/4"	1.375	1.500	Yellow	1-7/8"	1-7/8"	2-1/8"	11/16"	40
CG150K 1 1/2" 1.050-1.630	CG150D1050	1-1/2"	.950	1.050	Black	1-15/16"	2-3/16"	2-5/16"	3/4"	66
	CG25 (1)	1-1/2"	.950	1.050	Black	1-15/16"	2-3/16"	2-5/16"	11/16"	70
	CG150D1150	1-1/2"	1.050	1.150	Orange	1-15/16"	2-3/16"	2-5/16"	3/4"	66
	CG26 (1)	1-1/2"	1.050	1.150	Orange	1-15/16"	2-3/16"	2-5/16"	11/16"	70
	CG150D1250	1-1/2"	1.150	1.250	Red	1-15/16"	2-3/16"	2-5/16"	3/4"	66
	CG27 (1)	1-1/2"	1.150	1.250	Red	1-15/16"	2-3/16"	2-5/16"	11/16"	70
	CG115150AM	1-1/2"	1.156	1.312	Purple	1-15/16"	2-3/16"	2-3/8"	11/16"	60
	CG150D1375	1-1/2"	1.250	1.375	White	1-15/16"	2-3/16"	2-5/16"	3/4"	66
	CG28 (1)	1-1/2"	1.250	1.375	White	1-15/16"	2-3/16"	2-5/16"	11/16"	70
	CG128150AM	1-1/2"	1.281	1.531	Pink	1-7/8"	2-3/16"	2-3/8"	11/16"	60
	CG150E1500	1-1/2"	1.380	1.500	Blue	2-1/8"	2-5/16"	2-3/8"	3/4"	60
	CG29 (1)	1-1/2"	1.380	1.500	Blue	2-1/8"	2-5/16"	2-3/8"	3/4"	66
	CG150E1630	1-1/2"	1.500	1.630	Green	2-1/8"	2-5/16"	2-3/8"	3/4"	60
	CG30 (1)	1-1/2"	1.500	1.630	Green	2-1/8"	2-5/16"	2-3/8"	3/4"	66
	CG150E1750	1-1/2"	1.630	1.750	Brown	2-1/8"	2-5/16"	2-3/8"	3/4"	60
	CG31 (1)	1-1/2"	1.630	1.750	Brown	2-1/8"	2-5/16"	2-3/8"	3/4"	66
	CG150E1880	1-1/2"	1.750	1.880	Purple	2-1/8"	2-5/16"	2-3/8"	3/4"	60
	CG32 (1)	1-1/2"	1.750	1.880	Purple	2-1/8"	2-5/16"	2-3/8"	3/4"	66
CG200K 2" 1.380-2.060	CG200F1380	2"	1.250	1.380	Red	2-5/16"	2-13/16"	2-7/8"	3/4"	104
	CG33 (1)	2"	1.250	1.380	Red	2-5/16"	2-13/16"	2-7/8"	3/4"	112
	CG200F1500	2"	1.380	1.500	Blue	2-5/16"	2-13/16"	2-7/8"	3/4"	104
	CG34 (1)	2"	1.380	1.500	Blue	2-5/16"	2-13/16"	2-7/8"	3/4"	112
	CG200F1630	2"	1.500	1.630	Green	2-5/16"	2-13/16"	2-7/8"	3/4"	104
	CG35 (1)	2"	1.500	1.630	Green	2-5/16"	2-13/16"	2-7/8"	3/4"	112
	CG153200AM	2"	1.531	1.780	Orange	2-5/16"	2-13/16"	2-7/8"	3/4"	102
	CG200F1750	2"	1.630	1.750	Brown	2-5/16"	2-13/16"	2-7/8"	3/4"	104
	CG36 (1)	2"	1.630	1.750	Brown	2-5/16"	2-13/16"	2-7/8"	3/4"	112
	CG200F1810	2"	1.690	1.810	Yellow	2-5/16"	2-13/16"	2-7/8"	3/4"	104
	CG37 (1)	2"	1.690	1.810	Yellow	2-5/16"	2-13/16"	2-7/8"	3/4"	106
	CG200F1880	2"	1.750	1.880	Purple	2-5/16"	2-13/16"	2-7/8"	3/4"	104
	CG38 (1)	2"	1.750	1.880	Purple	2-5/16"	2-13/16"	2-7/8"	3/4"	106
	CG200F1940	2"	1.810	1.940	White	2-5/16"	2-13/16"	2-7/8"	3/4"	104
	CG39 (1)	2"	1.810	1.940	White	2-5/16"	2-13/16"	2-7/8"	3/4"	106
	CG200F2060	2"	1.940	2.060	Orange	2-5/16"	2-13/16"	2-7/8"	3/4"	104
	CG40 (1)	2"	1.940	2.060	Orange	2-5/16"	2-13/16"	2-7/8"	3/4"	106
NA	CG250G1965	2-1/2"	1.750	1.965	White	3"	3-1/4"	3-3/8"	1-1/8"	155
	CG250G2187	2-1/2"	1.970	2.185	Orange	3"	3-1/4"	3-3/8"	1-1/8"	155
	CG250G2360	2-1/2"	2.150	2.365	Brown	3"	3-1/4"	3-3/8"	1-1/8"	155
	CG250G2565	2-1/2"	2.350	2.565	Green	3"	3-1/4"	3-3/8"	1-1/8"	155
	CG300H2365	3"	2.150	2.365	Brown	3-5/16"	3-15/16"	4"	1-1/8"	214
	CG300H2565	3"	2.350	2.565	Green	3-5/16"	3-15/16"	4"	1-1/8"	214
	CG300H2755	3"	2.540	2.755	Blue	3-5/16"	3-15/16"	4"	1-1/8"	214
	CG300H2985	3"	2.760	2.985	Grey	3-5/16"	3-15/16"	4"	1-1/8"	214
	CG300H3220	3"	2.995	3.220	Yellow	3-5/16"	3-15/16"	4"	1-1/8"	214

Compliances:

Certified Made in the USA
 UL 514B, CSA Standard: C22.2 No. 18F
 NEMA Standard FB1 Rated Liquid Tight
 Federal Standard A-A-50553
 UL Rated Suitable for Hazardous Locations
 NEC: Class I, Division 2
 Class II, Divisions 1 and 2
 Class III, Divisions 1 and 2
 NEC 501-4(b), 505-4(a), 503-3(a)



Material Offerings by Size Range:

Alloy Steel: 3/8" - 3"
 Aluminum: CU-Free 1/2" - 1" Add Suffix AL to Cat #
 Stainless Steel: Type 316 1/2" - 1" Add Suffix SST to Cat #

RoHS and REACH Compliant
 CA Prop 65 Compliant
 UNSPC 39121719

(1) These Cat #'s are furnished with an installed locknut & sealing washer.
 All other items locknut & washer are sold separately.