

Quick Reference Guide

Productivity by Design | Reduce Downtime & Enhance Productivity



Twist-Lock® Edge Series Receptacles

Productivity Benefits

- » Fastest devices to terminate on the market
- » Screwless terminations provide a consistent, reliable connection in harsh environments

Reduce Downtime

- » Improve installation time by **over 80%**
- » **No need for torque driver** results in less time on the job



inSIGHT™ Data Monitoring Pin & Sleeve Devices

Productivity Benefits

- » Wirelessly monitor and track critical performance indicators such as **current, voltage, and temperature**
- » Provides data directly at point of use to **proactively communicate** process changes

Reduce Downtime

- » **Avoid costly downtime** and maintain productivity with advanced notification
- » Provides historical trending data for **preventive maintenance**



inSIGHT™ Environmental & Circuit Monitors

Productivity Benefits

- » Environmental monitors can accommodate up to **six external temperature probes**
- » **Easy-to-install** current transformers can **connect to existing circuits** without the need to disconnect power

Reduce Downtime

- » **Real-time monitoring** can provide insight into key metrics for **optimal equipment operation**
- » **Text or email alerts** can be sent if temperature crosses customer defined **thresholds**



Advantage™ Series Pin & Sleeve Devices

Productivity Benefits

- » **Approved as disconnecting means** for both motor circuits and branch circuits
- » Visually verify power status with **LED indicators**

Reduce Downtime

- » Able to **disconnect at point of use**
- » **Prewire and test** replacement motors **prior to motor failure**, significantly reducing downtime with this plug-and-play technology



inSIGHT™ Disconnects with LEDs

Productivity Benefits

- » **Visually communicates electrical status** of the switch by phase prior to removing the cover to **improve safety procedures**

Reduce Downtime

- » Six highly visible integral phase identification **LEDs** provide **visual indication** of presence of power

Quick Reference Guide

Productivity by Design | Reduce Downtime & Enhance Productivity



Productivity Benefits

- » Hubbell LINKOSITY® and MotorQuick™ are **prewired systems for fast installation**
- » The enclosures are **certified by NSF and are IP69K rated** for use in high pressure washdown
- » **Safely make quick moves and changes** on the plant floor

LINKOSITY® & MotorQuick™

Reduce Downtime

- » Significantly **reduces motor replacement time** by combining LINKOSITY® plug-and-play technology and Hubbell motor disconnects
- » Facilitates **fast repair and replacement** of critical equipment



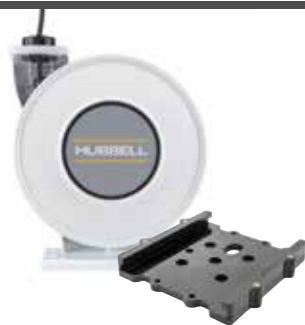
Productivity Benefits

- » Ensure durability with **superior impact and chemical resistance**
- » **Superior water ingress protection: UL Type 4, 4X, 6, 6P; IP65, IP66, IP67, IP69K**
- » Green and red **LEDs within housing assembly** illuminate to **indicate wiring condition** for rapid visual status check

Watertight Wiring Devices

Reduce Downtime

- » **Protection from water ingress** ensures connection integrity
- » **Visual indication** to help installers easily see the LED indicators to **show status or condition** of the device



Productivity Benefits

- » Installation prep can be done **by one person within minutes**
- » The inREACH™ mounting bracket **reduces labor costs** while complying with OSHA and COVID-19 restrictions

inREACH™ Cord Reels

Reduce Downtime

- » Mounting bracket **decreases or eliminates the additional labor** associated with installing reels



Productivity Benefits

- » **Quickly diagnose** mis-wiring situation or application
- » **No measurement readings** to interpret

Twist-Lock® Circuit Testers

Reduce Downtime

- » Keep plant running by **recognizing wiring issues before they escalate** and potentially damage equipment



Wiring Device Solutions for Strategic Manufacturing Facilities

A go-to resource to help manufacturing facilities quickly find wiring devices they can count on to support production, safety, and reliability.

Additional Resources



COVID-19 Guidance for Manufacturing Workers and Employers

